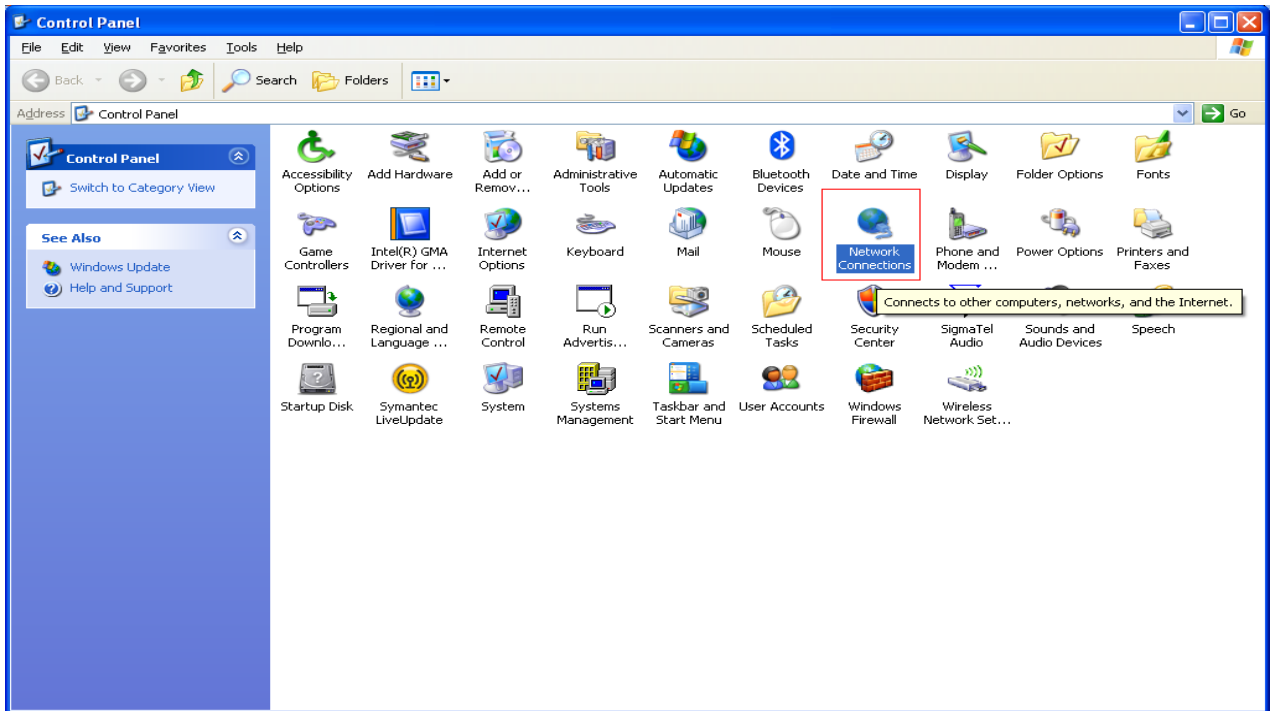
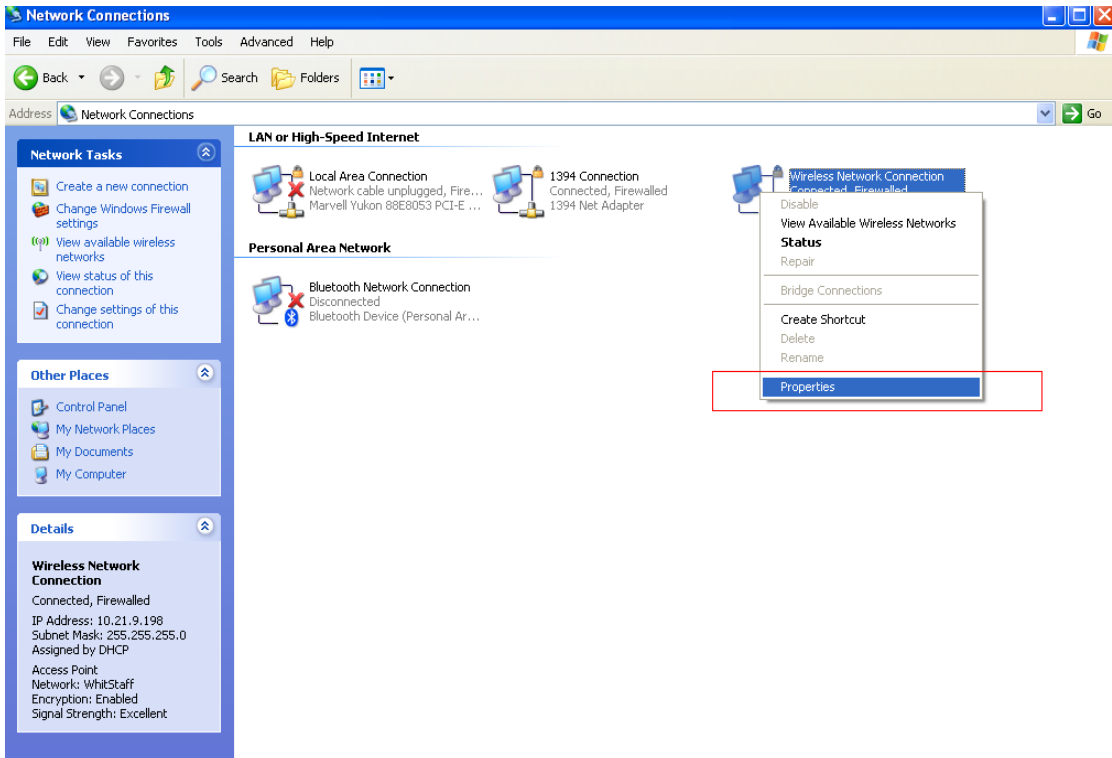


Steps to Connect to the Staff Wireless Network (WhitStaff) with Windows XP

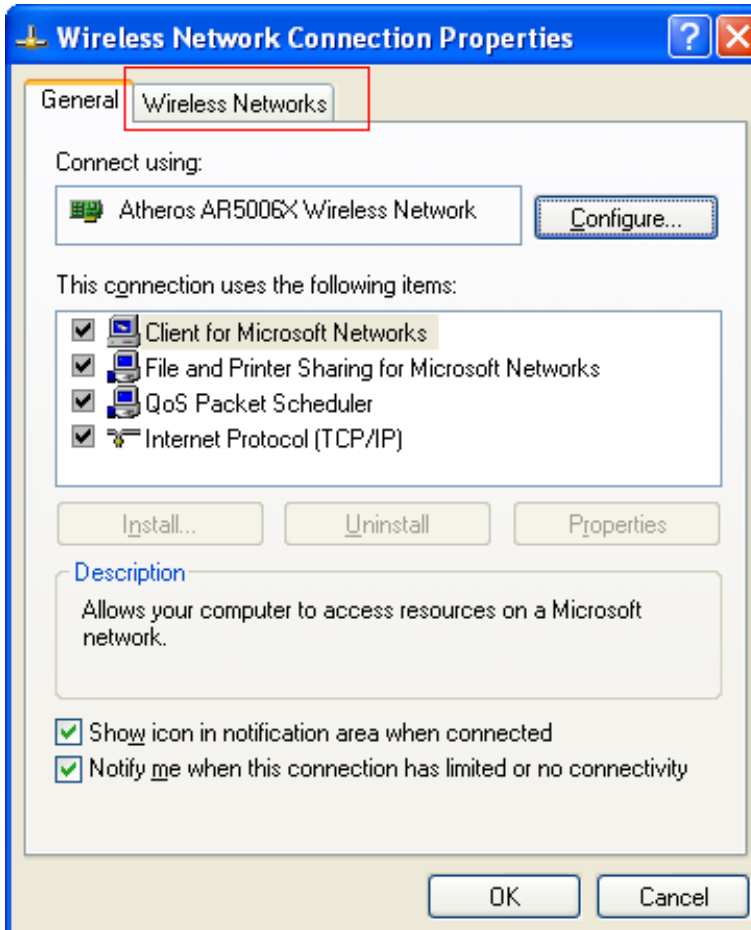
Open up your Control Panel and select the Network Connections panel:



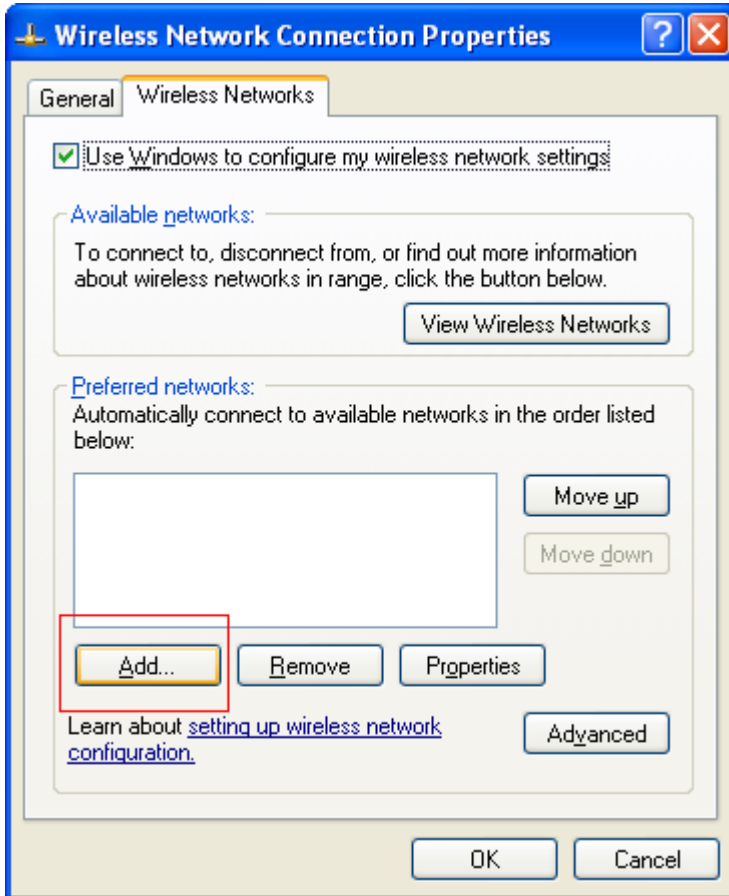
Right click on your Wireless Network Connections and select Properties:



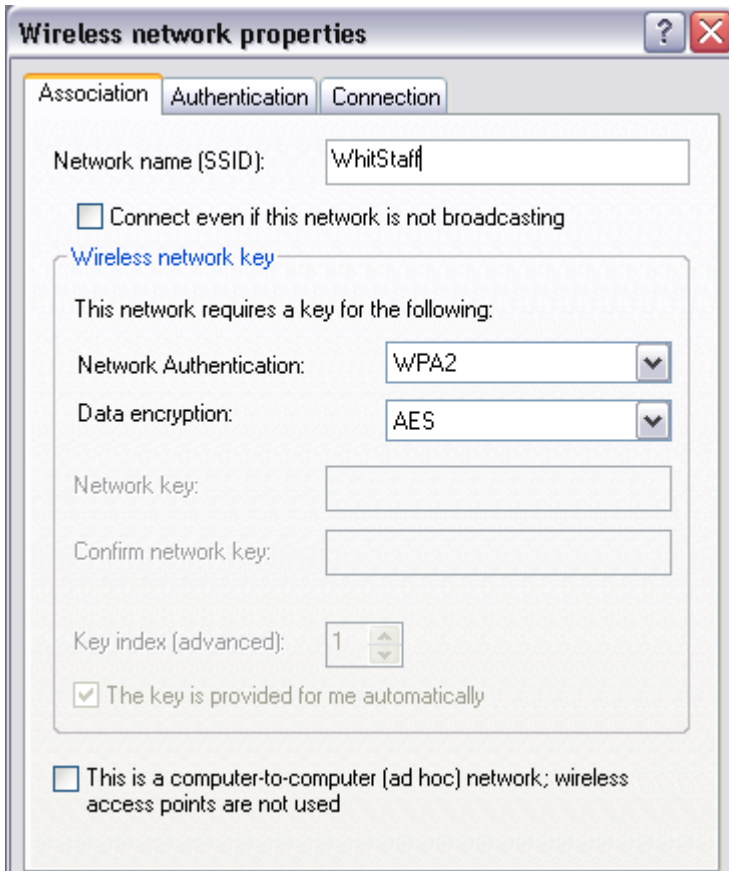
In the Wireless Connections properties click the Wireless Networks tab:



Click the Add button:

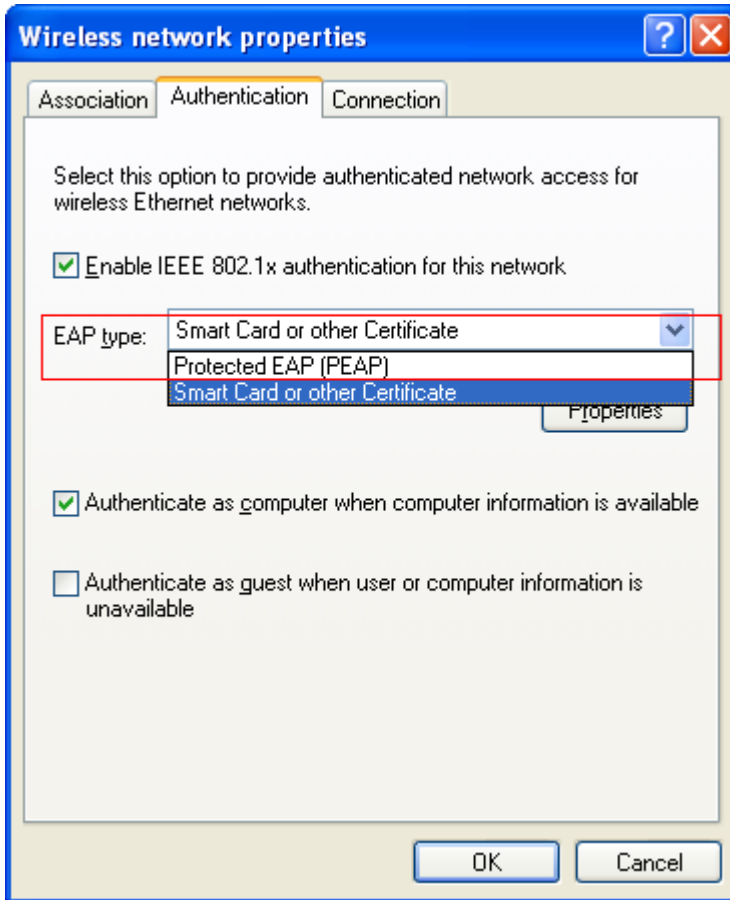


For the Network Name(SSID) type **WhitStaff** and change the Network Authentication from OPEN to **WPA2**



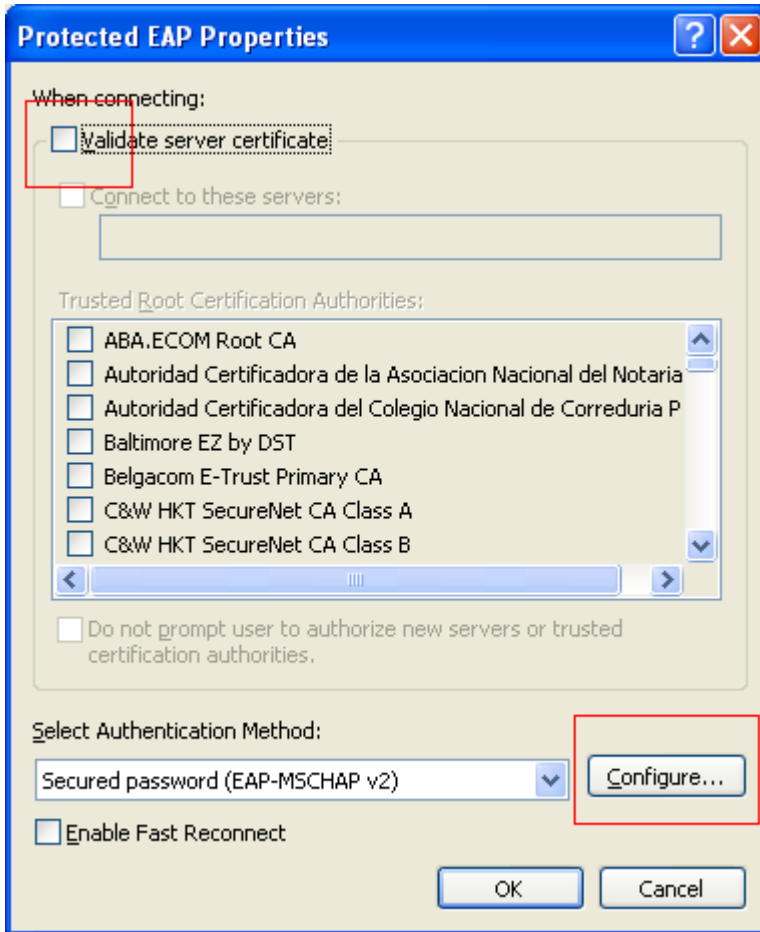
Change the data encryption to **AES**

Click on the Authentication tab

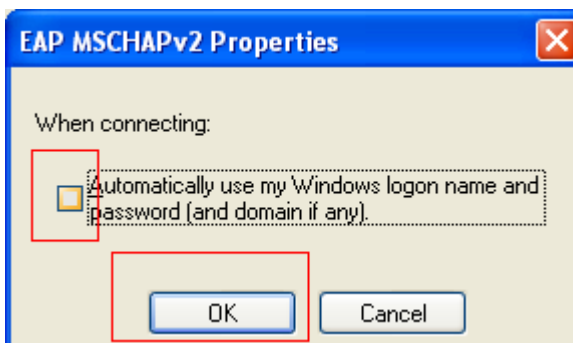


Change the EAP type from SmartCard or Other Certificate to **Protected EAP (PEAP)** and click properties.

Uncheck Validate Server certificate and click Configure

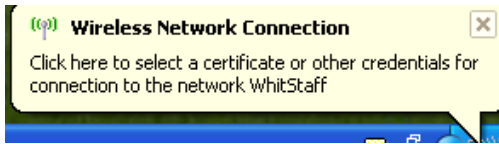


On the EAP MSCHAPv2 Properties page uncheck Automatically use my Windows logon name and password (and domain if any). and click OK.



Click OK to close the Protected EAP Properties, click OK to close the Wireless Network Properties.

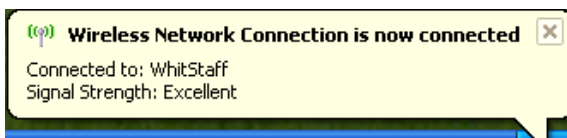
You should see a box pop up near you system clock asking to: Click here to select a certificate or other credentials for connections to the network WhitStaff. Click the popup.



In the Enter Credentials box, type in your username, and password. For Logon domain enter **ADMIN**



Initial connection may take a while, after you are connected you should see a box that says Wireless Network Connection is now connected.

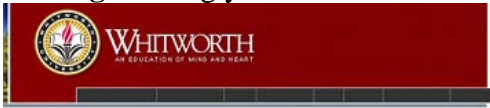


SafeConnect is a new system Whitworth is using to ensure all computers connected to the network are running current antivirus and are updated. If your computer is not running the current required software it will be blocked from sending traffic across the network. Below are instructions for Windows PCs, but Macintosh must follow a similar procedure not displayed. At the end of these instructions is a list of acceptable antivirus software. **Whitworth is no longer providing antivirus software.**

The first time you connect to the network or internet you will need to do the following:
(Note: This is only required the first time)

- 1) Open **Internet Explorer** (*other browsers may not be supported*) and go to any web page other than www.whitworth.edu, like www.cnn.com; you will get following page.

Logon using your network/e-mail username and password.



Welcome to the Network!

We require you to authenticate before proceeding

[Click Here To Read Our Full Policy](#)

Network Username: Password:

Copyright © Whitworth University. All Rights Reserved.
300 W. Hawthorne Road, Spokane, WA 99251
Campus Telephone: 509.777.1000

2) Select **Yes** I will install ...



Welcome to the Network!

In order to ensure a safe operating environment for all users of the campus network, all computers are required to install and run various software to ensure a safe operating environment (anti-virus software, appropriate security patches, etc.). To ensure compliance, we require that all users install a software policy key.



[Click here to read the full Policy](#)

[Click here to read the FAQ](#)

Yes, I will install the SafeConnect Policy Key Client and accept the terms and conditions for Internet Use

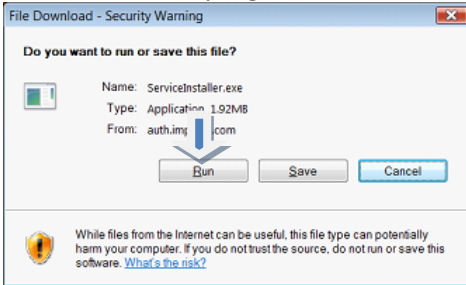
When the initial File Download box comes up, please click "Open."

Netscape & FireFox users, please click "Save" and when the file finishes downloading, click on the installer.

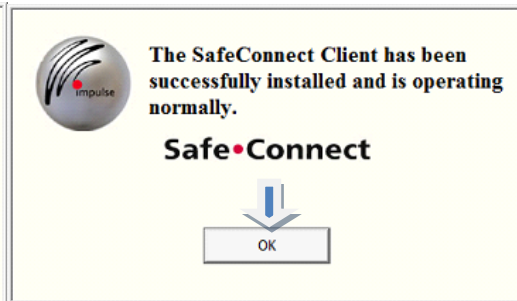
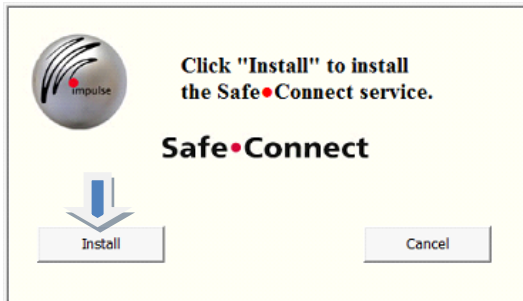
I DO NOT ACCEPT

If you click "I DO NOT ACCEPT" you will not have internet access.

3) Run this program - twice



4) Select **Install** and the **OK**



- 1) You will have network and internet access once you reboot your computer. If your computer does not have the required software, a web page will be displayed stating the problem. If you need further assistance, you can call the help desk at 509.777.3911 (x3911).

List of Acceptable Antivirus Programs:

Authentium

Avast

AVG/ AV Guard

Bitdefender

EZ AntiVirus

Kaspersky

McAfee /McAfee NA/ McAfee 45

MS OneCare / Forefront

NOD32

Sophos

SpySweeper AV

Symantec / Symantec Corp

TrendMicro /TrendMicro Corp

ZoneAlarm