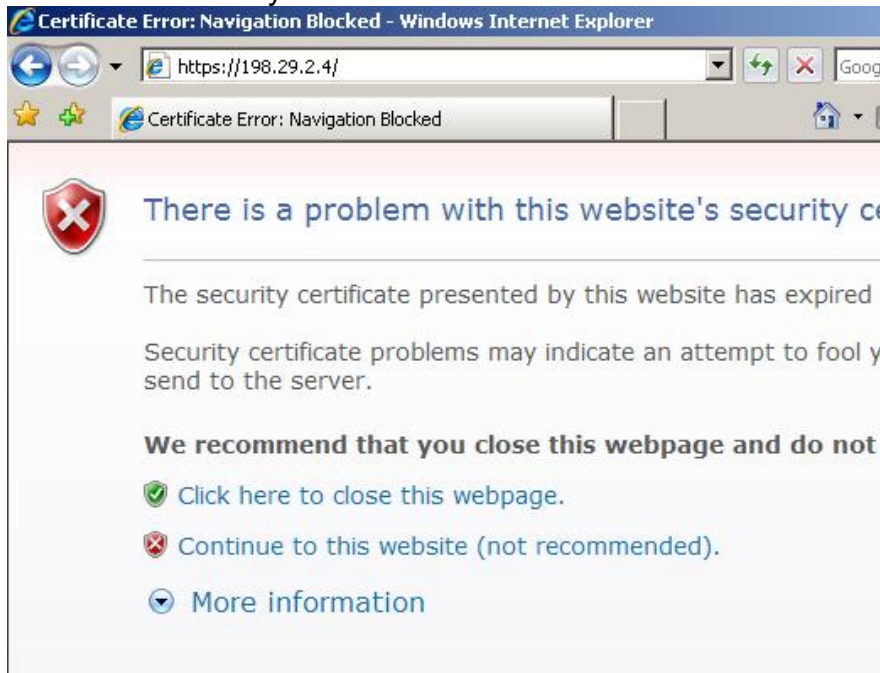


Staff Web VPN Connection

Warning: To get network files from off-campus you will have to download the file to your local computer and work on it there and then upload it back to the filer server again.

1. Go to the website <https://198.29.2.4> where you will be prompted about the website security. Please select 'Continue to this website'.



2. Enter your Network/Username and Password at the prompt.



Whitworth University WebVPN

Login

Please enter your username and password.

Username
Password

- On the main page you will find the options for HomeDrives (H: drive), Campus (L: drive), and Department (T: and S: drives). Click on these to access your network shares.



Whitworth University WebVPN

If the Floating Toolbar does not open, click here to open it.

Start Application Access

Websites

Browse Network

[HomeDrives](#)

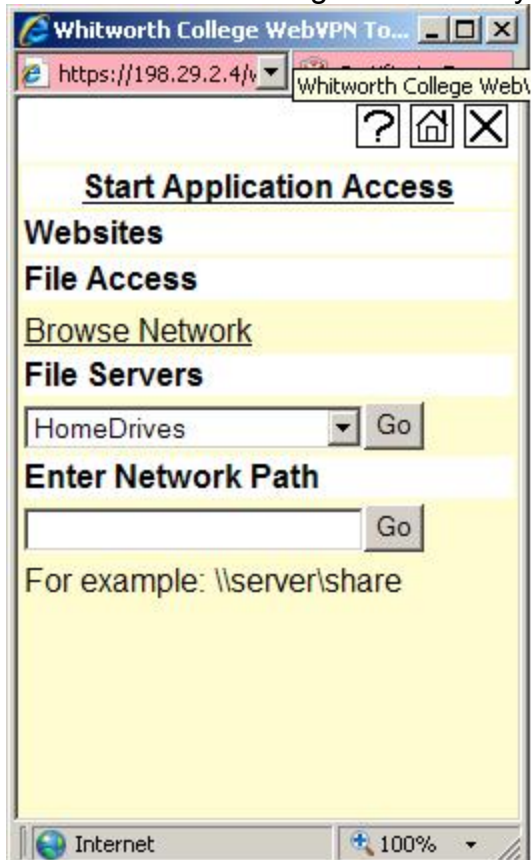
[Campus](#)

[Department](#)

Enter Network Path

For example: \\server\share

There is also a floating taskbar that you can use as well.



4. After you make your choice you can see what folders to access.

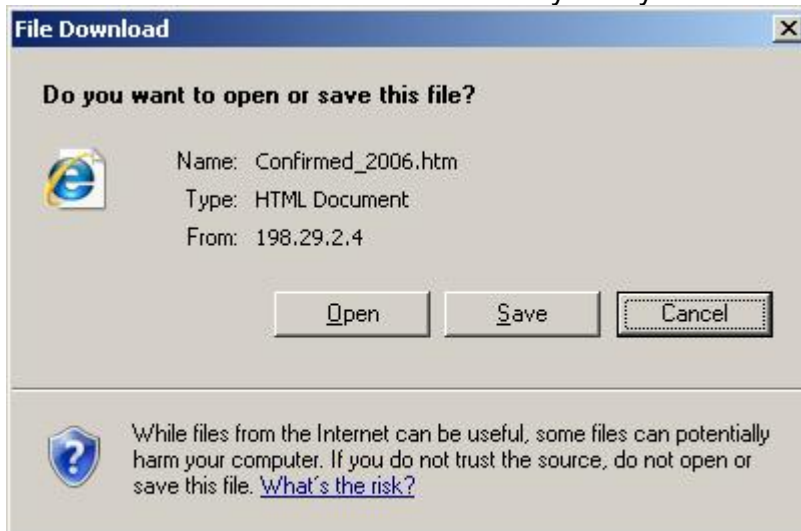
To view a file or save it locally, click the filename.

Up Folder Copy File to Server New Folder Delete Rename

Click to change path: \\fs1\campus\

Name	Size	Type	Date Modified
<input type="checkbox"/> Academic Affairs		Folder	07/18/2007 10:15:36 AM
<input type="checkbox"/> Admissions- Enrollment Services		Folder	08/01/2007 08:59:45 AM
<input type="checkbox"/> Alumni Relations		Folder	06/14/2007 10:35:06 AM
<input type="checkbox"/> Aquatic Center		Folder	02/17/2006 12:43:37 PM
<input type="checkbox"/> Art		Folder	07/24/2007 02:03:35 PM
<input type="checkbox"/> Athletics		Folder	05/09/2007 11:22:53 AM
<input type="checkbox"/> Auditorium		Folder	09/24/2005 05:38:30 PM
<input type="checkbox"/> Biology		Folder	04/10/2006 01:00:19 PM
<input type="checkbox"/> Book Store		Folder	08/21/2007 08:56:00 AM

5. Keep clicking until you reach the file you are interested in and then click on the name of the file and download it to your system.



- When you finish working on your file upload it back to the file server. To do that you will browse to where you want to save the file and click the 'Copy to server' button. From there you will need to browse to where the file is located on your computer and give it a name. Click 'Copy.'

Browse Network

Copy File to Server

You are copying a file to the `\\fs1\campus\Information Systems\` directory.
Enter the path of the file you want to copy; this file must be accessible from your workstation.

Local File to Use:

Name After Copy: