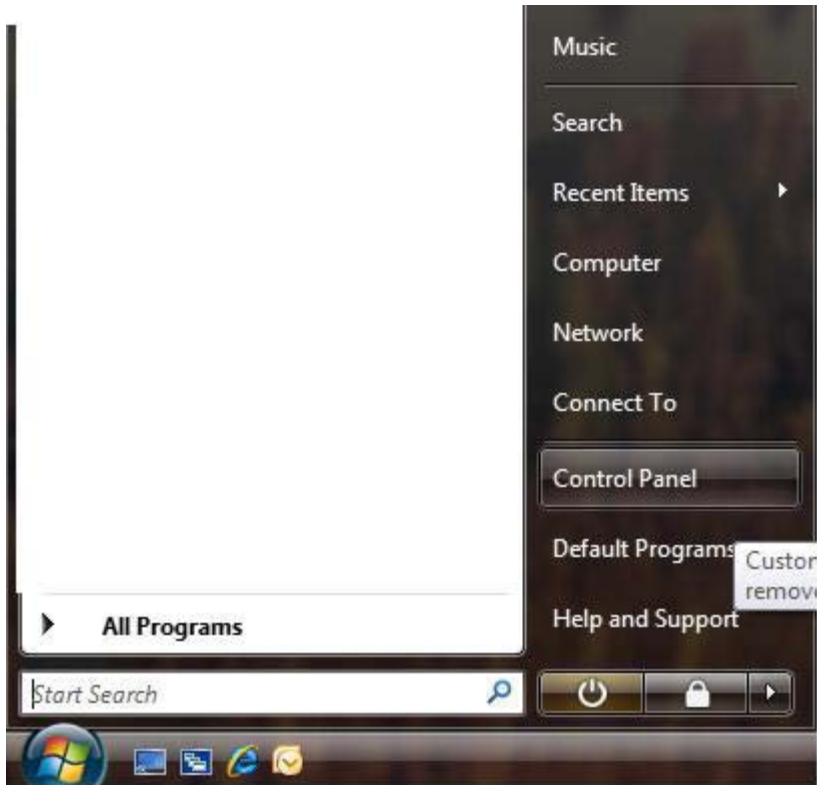
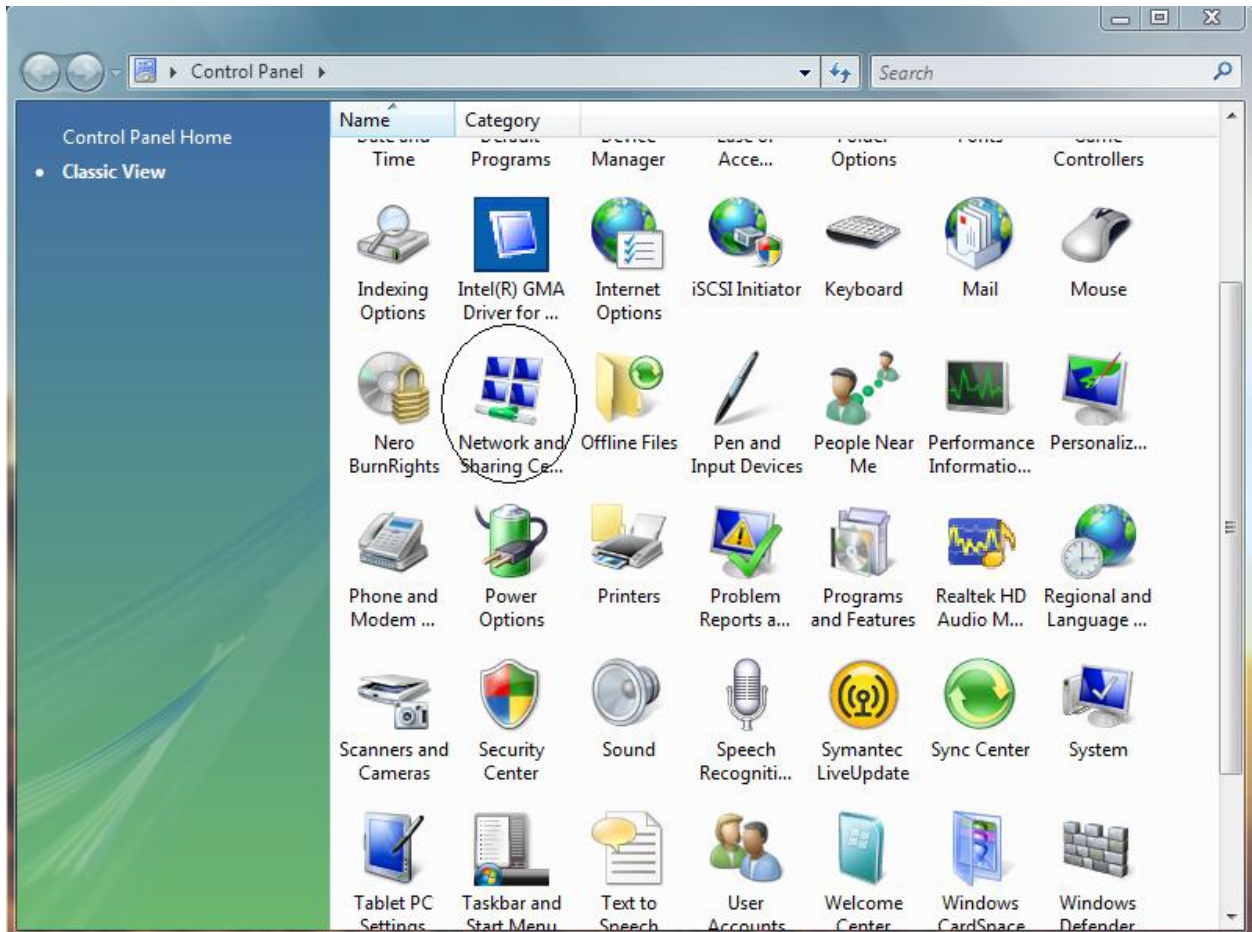


Steps to Connect to the Student Wireless Network (WhitStudent) with Windows Vista

From the start menu, click on the Control Panel:



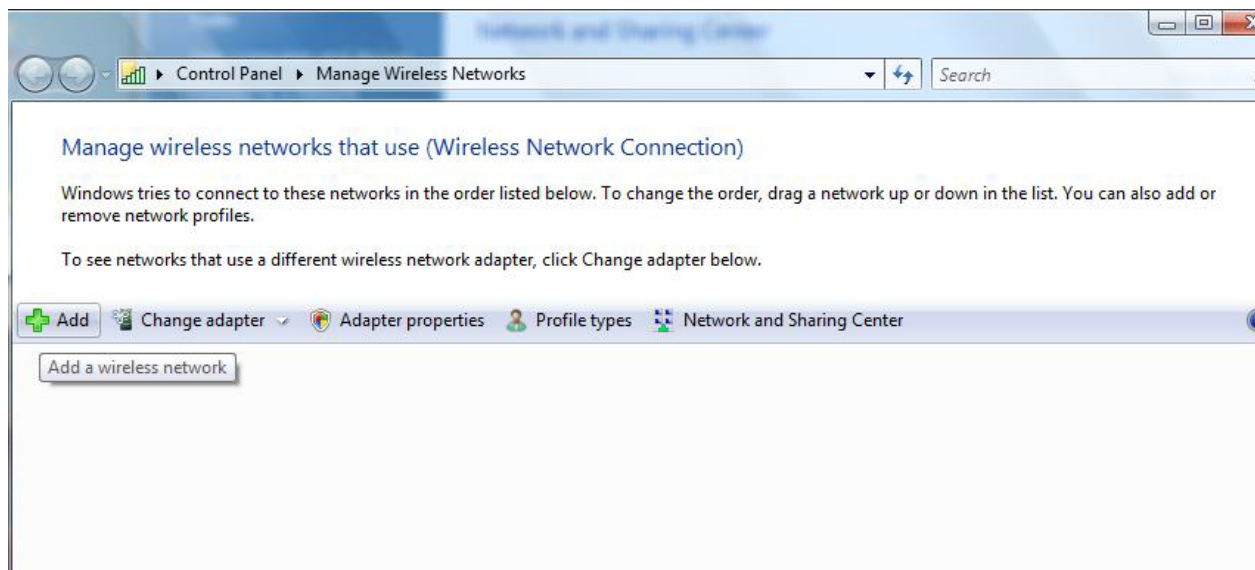
Double-click on the Network and Sharing Center Icon:



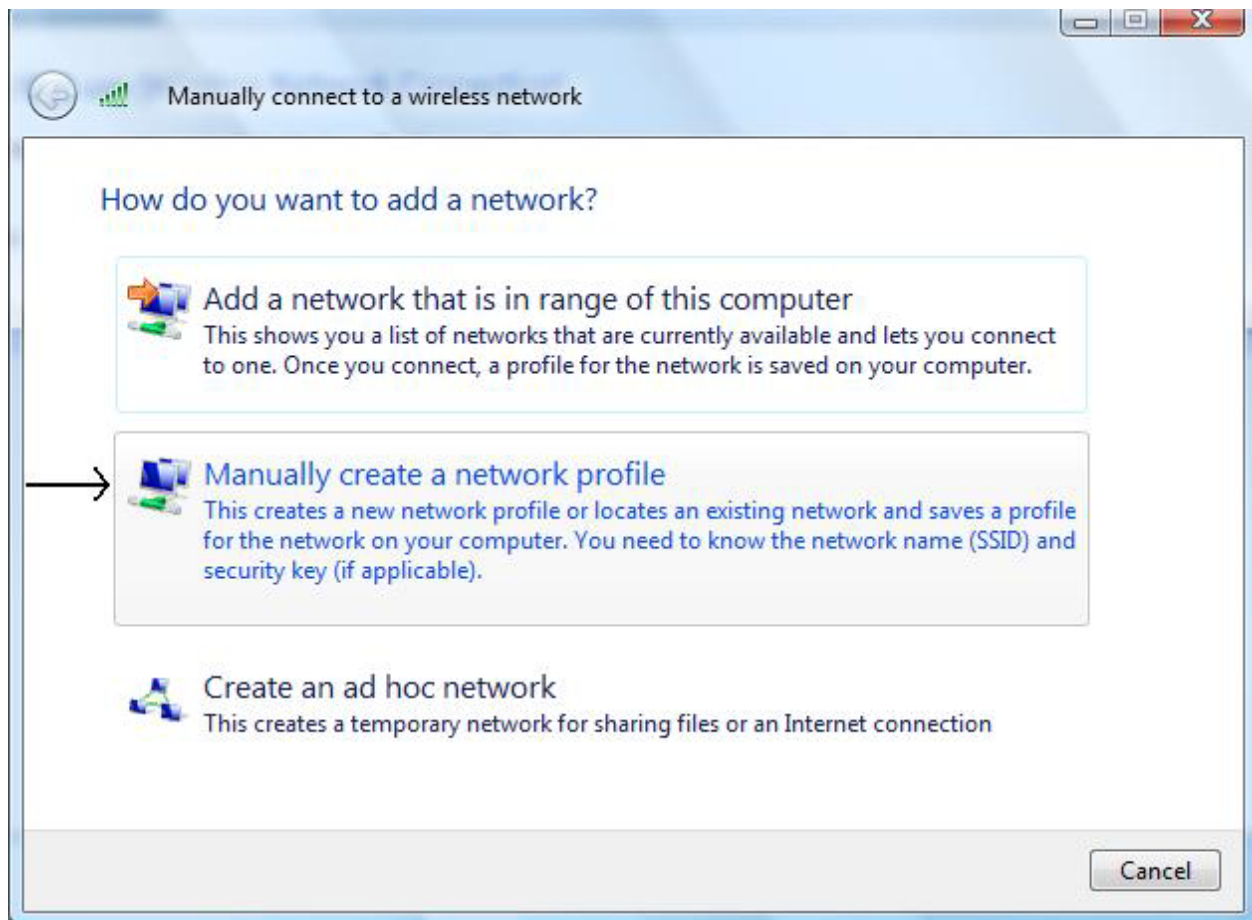
Click on Manage Wireless Networks under Tasks:



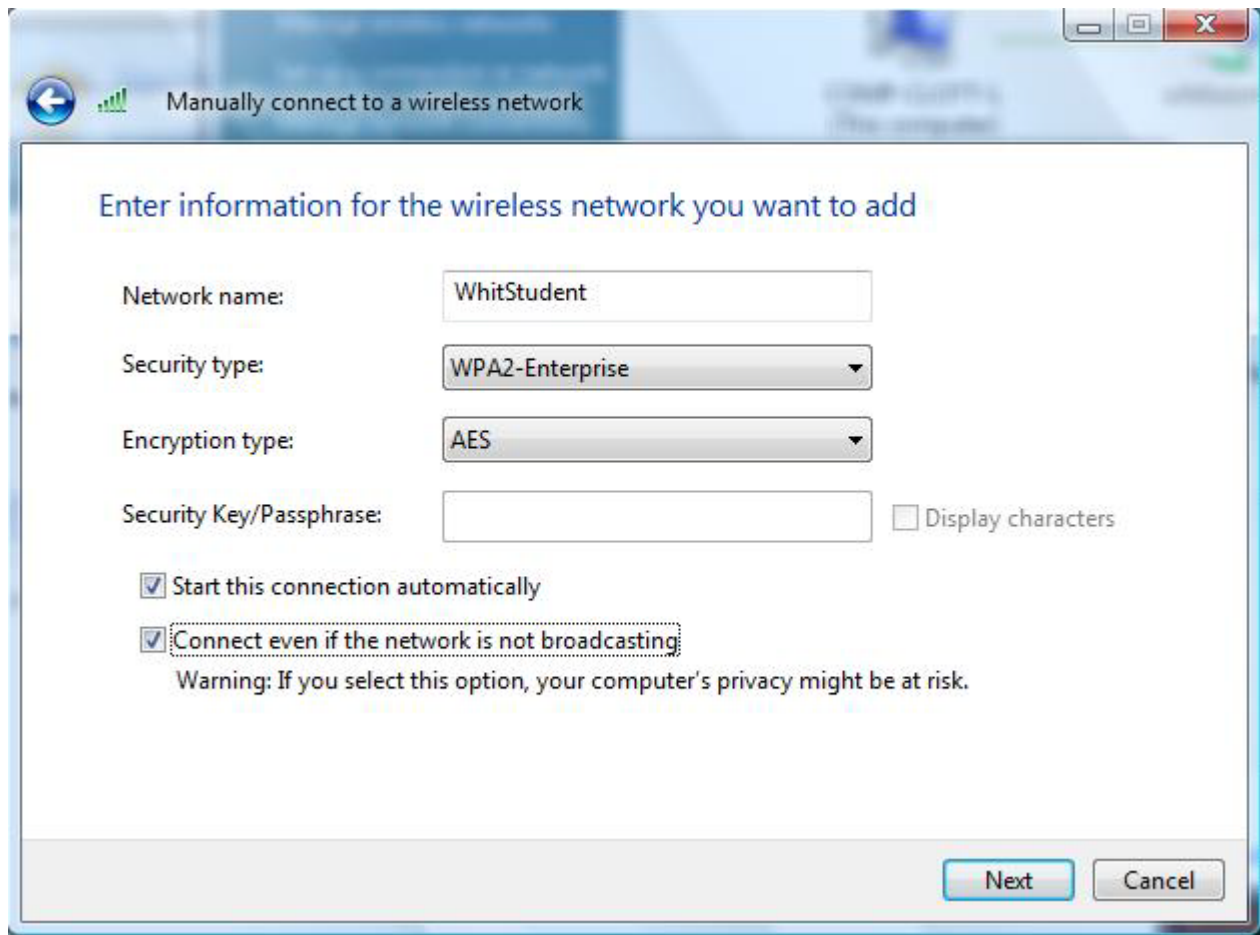
Click on the Add button:



Select the manually create a network profile option:



For the network name enter **WhitStudent** (case sensitive) and for the security type select WPA2-Enterprise, and set the encryption to AES. Make sure both the bottom boxes are checked and click next:

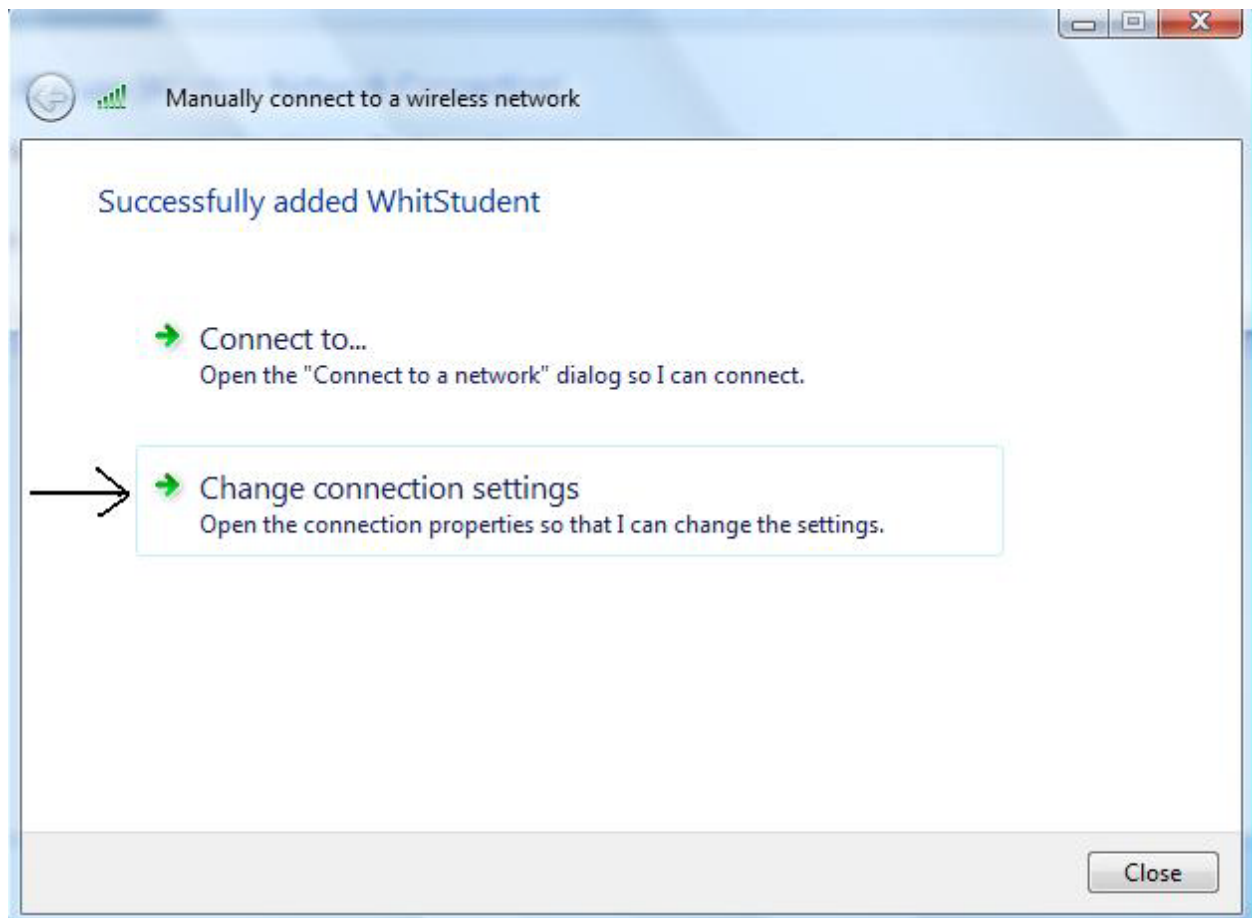


The screenshot shows a Windows dialog box titled "Manually connect to a wireless network". The main heading is "Enter information for the wireless network you want to add". The form contains the following fields and options:

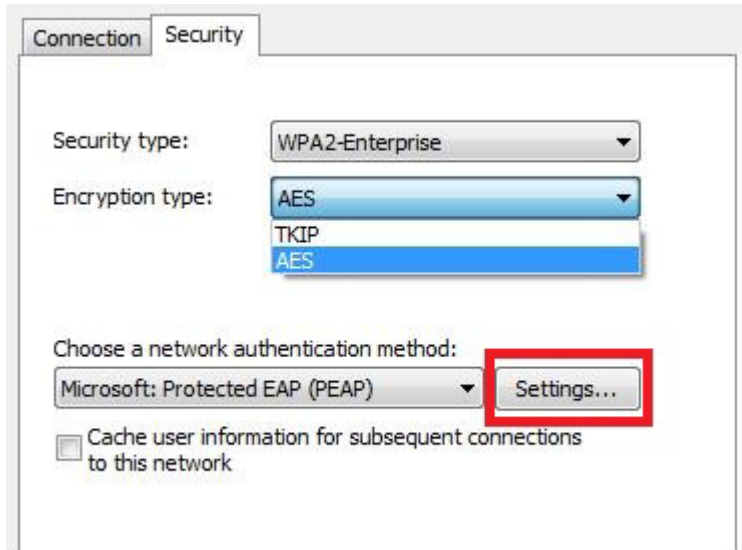
- Network name: WhitStudent
- Security type: WPA2-Enterprise
- Encryption type: AES
- Security Key/Passphrase: (empty field) Display characters
- Start this connection automatically
- Connect even if the network is not broadcasting

A warning message is displayed below the second checked option: "Warning: If you select this option, your computer's privacy might be at risk." At the bottom right, there are "Next" and "Cancel" buttons.

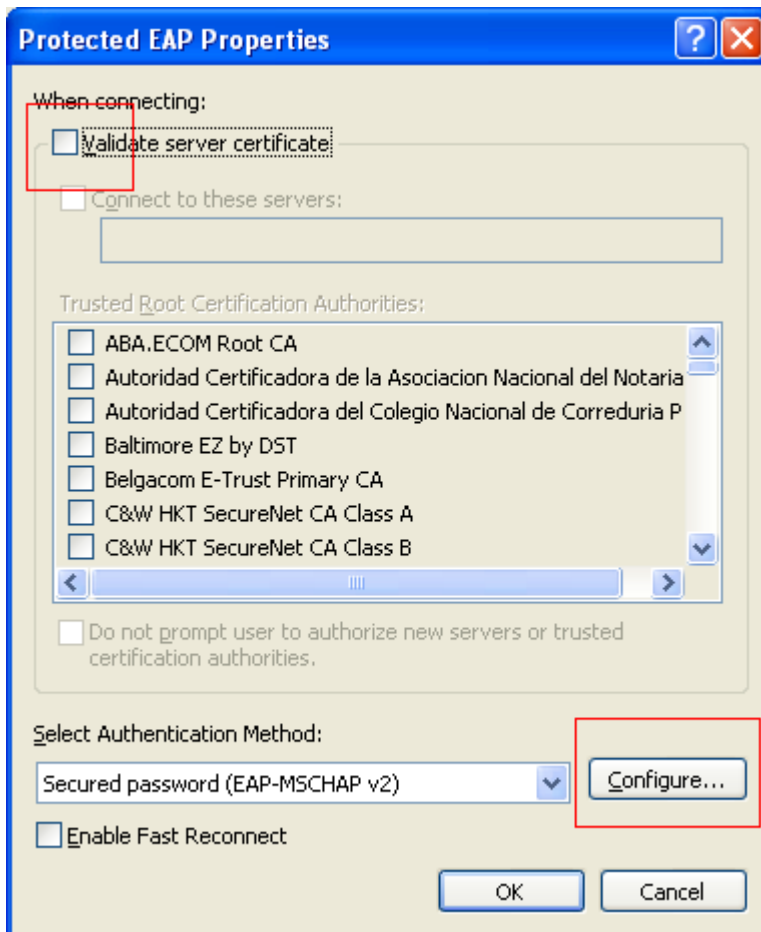
Select Change connection settings:



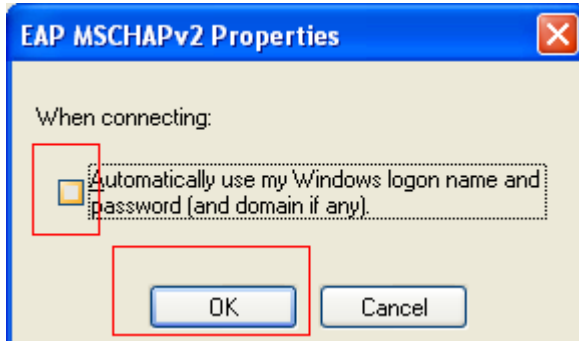
On the Security tab uncheck the cache user information box and click setting:



Uncheck Validate Server certificate and click Configure



On the EAP MSCHAPv2 Properties page uncheck Automatically use my Windows logon name and password (and domain if any). and click OK.



Click OK to close the Protected EAP Properties, click OK to close the Wireless Network Properties.

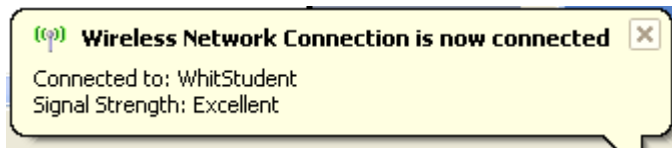
You should see a box pop up near you system clock asking to: Click here to select a certificate or other credentials for connections to the network WhitStudent. Click the popup



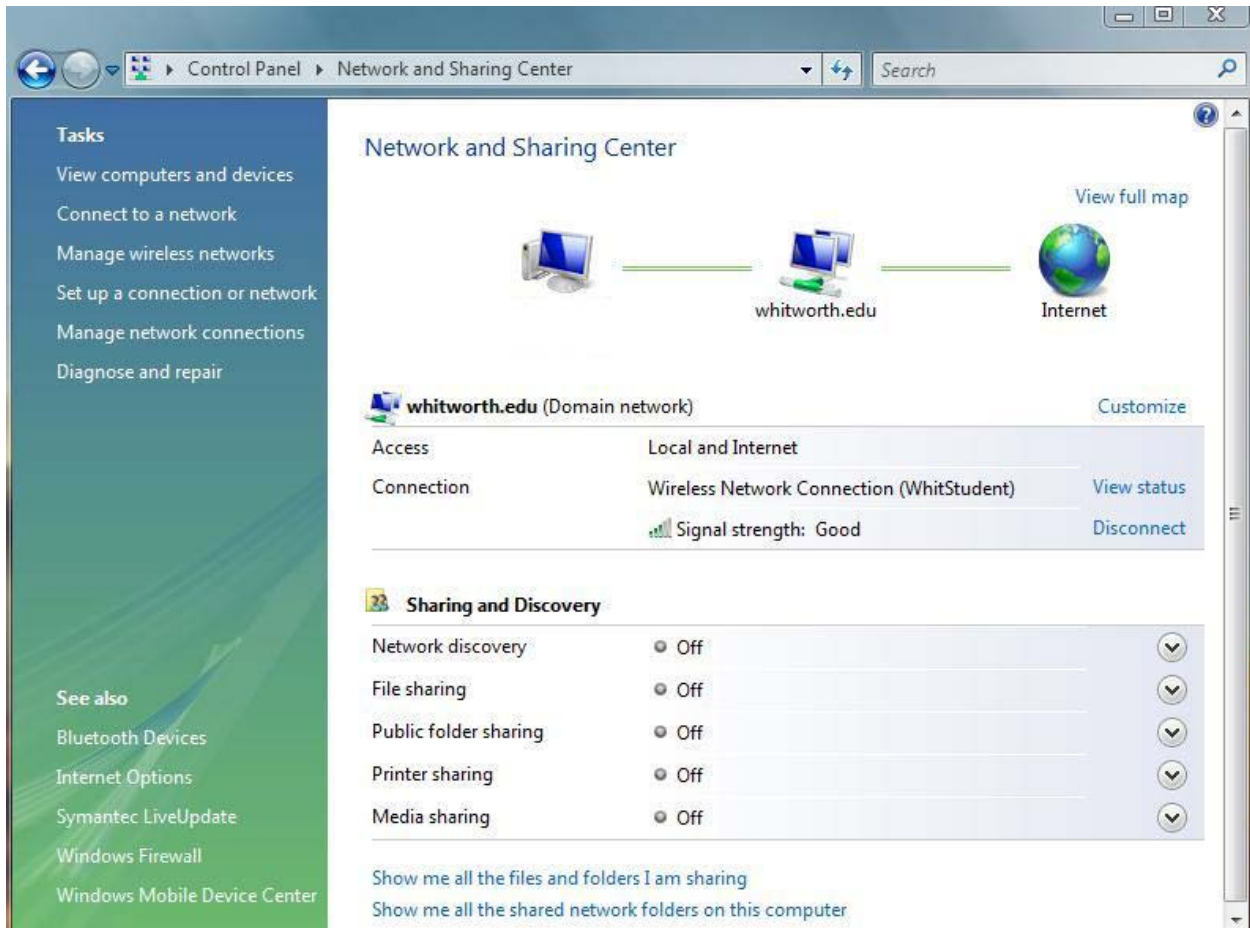
In the Enter Credentials box, type in your username, and password. For Logon domain enter **ADMIN**



Initial connection may take a while, after you are connected you should see a box that says Wireless Network Connection is now connected.



You can close out of all open windows except the Network and Sharing center to see if you are connected as well:



SafeConnect is a new system Whitworth is using to ensure all computers connected to the network are running current antivirus and are updated. If your computer is not running the current required software it will be blocked from sending traffic across the network. Below are instructions for Windows PCs, but Macintosh must follow a similar procedure not displayed. At the end of these instructions is a list of acceptable antivirus software. **Whitworth is no longer providing antivirus software.**

The first time you connect to the network or internet you will need to do the following:
(Note: This is only required the first time)

- 1) Open **Internet Explorer** (*other browsers may not be supported*) and go to any web page other than www.whitworth.edu, like www.cnn.com; you will get following page.

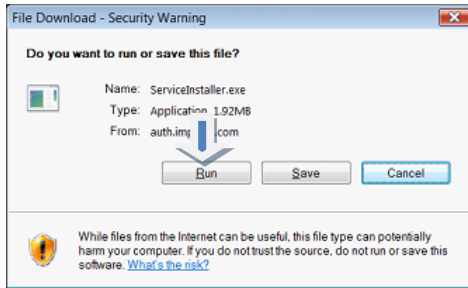
Logon using your network/e-mail username and password.



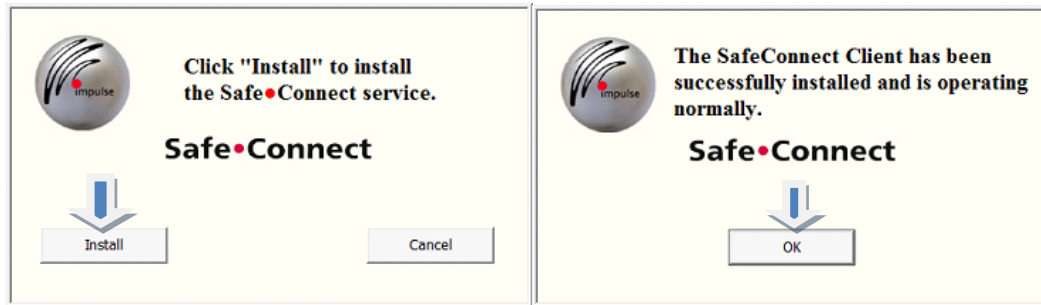
- 2) Select **Yes I will install ...**



- 3) **Run this program - twice**



4) Select **Install** and the **OK**



5) You will have network and internet access once you reboot your computer. If your computer does not have the required software, a web page will be displayed stating the problem. If you need further assistance, you can call the help desk at 509.777.3911 (x3911).

List of Acceptable Antivirus Programs:

Authentium
Avast
AVG/ AV Guard
Bitdefender
EZ AntiVirus
Kaspersky
McAfee /McAfee NA/ McAfee 45
MS OneCare / Forefront
NOD32
Sophos
SpySweeper AV
Symantec / Symantec Corp
TrendMicro /TrendMicro Corp
ZoneAlarm