



*Images*

WHITWORTH ANNUAL REPORT 2003-2004



WHITWORTH'S *mission*  
IS TO *provide* ITS  
*diverse* STUDENT BODY  
AN EDUCATION OF *mind*  
AND *heart*, EQUIPPING  
ITS GRADUATES TO *honor*  
GOD, *follow* CHRIST AND  
SERVE *humanity*.

# seeing things



I'm big into images. In August, Bonnie and I celebrated our 30th anniversary. Unfortunately, we didn't see each other that day. We'd planned to rendezvous at Pepperdine University, where she and our younger daughter, Bailley, were dragging a U-Haul containing not one item I would find remotely useful. Since I'd foolishly expressed

that sentiment to them, they were delighted that I and my attitude would not be along on the trip.

That changed when their car blew up in Oregon. My advice – suddenly in demand – was for them to buy any beater that would get them to Malibu, Calif. Everything worked out fine. Bailley fell all over herself trying to convince us that she was happy to have the only car with a walk-in trunk in the Pepperdine parking lot, and Bonnie and I eventually enjoyed our belated anniversary together.

I had to spend our anniversary night without Bonnie, but I conjured up a parade of images that ranged from the night we met right up to the Oregon adventure. All made me grateful. This

Annual Report provides you with some impressive images of our recent graduates. They, too, make me grateful. I have my own images of this group: I can picture the competitive fire in Kristin Shields' eyes as she fought through injuries during her Whitworth career. That fire led to my most recent image of Kristin – one of her with UConn basketball superstar Emeka Okafor after they'd been named the NCAA's Academic All-Americans of the Year. When I picture Caleb Hug, I see a group of us praying that God would heal this brilliant young man, who underwent serious surgery in his sophomore year; I can also picture my joy the first time I saw him back among us. Jolene Piccolo's image for me is one of an accomplished young woman who credits the diversity of backgrounds she's encountered in our Master of International Management Program with preparing her for a prestigious graduate-study program with the United Nations. And when I picture Mike Frederick, I laugh. Clearly one of Whitworth's most talented (and good-humored) musicians ever, Mike plays with such passion that he gets lost in his gift. If you've seen him, you know what I mean.

These students represent academic excellence, commitment to Christ and service to others. By supporting Whitworth, you do the same. Our image of you is one of generosity, steadfastness, and deep commitment to Whitworth's mission and its students. It's an image that is strong in the minds and hearts of those who appreciate all that you mean to the college.

### Construction Completed on Weyerhaeuser Hall

Students, faculty, staff and campus visitors watched in anticipation throughout the year as Weyerhaeuser Hall rose at the north end of The Loop. Construction on the \$7.13 million, 33,000-square-foot project began at the end of June 2003 and was completed for the start of fall classes. A grand-opening celebration was held Oct. 2, during Homecoming Weekend; the formal dedication, involving Annette Weyerhaeuser and her family, was scheduled for mid-October during the fall meeting of the board of trustees, on which C. Davis Weyerhaeuser served for more than 50 years.



### Whitworth Keeps Climbing in U.S. News' Rankings



In *U.S. News & World Report's* 2004 rankings of 126 master's-level universities in the West, Whitworth ranked sixth on both the best-colleges and best-values lists. Fueled by record numbers of freshman applications, freshman-to-sophomore retention, graduation rates and other indicators of academic quality, the college keeps moving up. In the magazine's latest rankings, released in August, Whitworth rose to #5 on the best colleges list and #2 for best values.

### New Sculpture Grabs Attention

A nine-foot steel sculpture by Spokane artist Harold Balazs was dedicated in the courtyard of Whitworth's Harriet Cheney Cowles Memorial Library in September. The dedication took place in conjunction with an exhibit of the artist's work in Koehler Gallery. Balazs is well known in Spokane for his centennial and Chinese-lantern sculptures near Riverfront Park and has exhibited his work throughout the Northwest. His courtyard sculpture fulfills Whitworth's commission to create an installation that would "challenge and amuse" students and visitors.



### New Observatory Opens Skies to Students



Whitworth's growing science program expanded upward with the installation of a dome atop the Eric Johnston Science Center; the new structure houses one of the most advanced telescopes in the region. The project, funded by grants from the Carl M. Hansen Foundation and the Johnston-Fix Foundation, will enhance research and learning opportunities for Whitworth faculty and students and will also be accessible through the Internet to local high-school students and amateur astronomers.

### Whitworth Presents the Bard with a Beat

The Bard joined forces with African-style rhythm and dance in Whitworth Theatre's production of William Shakespeare's *A Midsummer Night's Dream*, in October. The Whitworth staging of the Shakespeare classic featured a live drum ensemble led by

master percussionist Michael Moon Bear, an expert in the djembe and other African drums who also served as musical director for the production.



### International Entrepreneur Shares Savvy, Inspiration

International entrepreneur and "grandfather" of the micro-enterprise development movement David Bussau presented two lectures at Whitworth in October. Bussau, who got his start as an entrepreneur in the food and construction industries, is the founder of Opportunity

International, a micro-enterprise development organization that has created more than a million jobs across 60 countries during the past 25 years. In 2000, Bussau was named one of Australia's 10 most creative minds by *Bulletin Magazine* and was awarded The Order of Australia.



### Students Share Thailand Reflections in Online Journal

Students used a new online journal to share their reflections and photographs of Whitworth's first Jan-Term Thailand Studies Program, one of the college's many innovative, faculty-led off-campus study opportunities. Led by a team of professors from business, education and English/women's studies, students explored globalizing influences on Thai economics, education, religion and gender roles. Throughout their travels students posted images and insights on the college home page where family and friends could track their journey. Visit the site at: [www.whitworth.edu/thailandstudiesprogram](http://www.whitworth.edu/thailandstudiesprogram).



### Jazz Ensemble Wins Again at Lionel Hampton Festival

The Whitworth College Jazz Ensemble and two Whitworth student-musicians won top awards at the 37th annual Lionel Hampton Jazz Festival, held Feb. 25-28 at the University of Idaho, in Moscow. For the fifth time in eight years, the Whitworth ensemble, led by Professor of Music Dan Keberle, took first place



in the college/university division of the competition. Festival judges also honored Whitworth senior Mike Frederick for outstanding college guitar solo and junior Chris Parkin for outstanding college alto saxophone solo.



### Whitworth College Repeats as 'Best Christian Workplace'

For the second consecutive year, Whitworth was named the best Christian workplace among large higher-education institutions, based on a national survey of employees at Christian businesses and nonprofit organizations. The top organizations were featured in



the May issue of *Christianity Today* and announced at the Christian Management Association conference in Grapevine, Texas, where Whitworth President Bill Robinson was invited to lead a workshop for senior leaders and to participate in a plenary presentation. The survey, administered by the Best Christian Workplaces Institute, included responses from more than 10,000 employees across a range of industries.

### Acclaimed Author Kathleen Norris Speaks on Campus

Whitworth welcomed Kathleen Norris, author of *New York Times* bestsellers such as *The Cloister Walk*, *Dakota: A Spiritual Geography*, and *Amazing Grace: A Vocabulary of Faith*, as its 2004 Simpson-Duvall Lecturer. Described by critics as "a writing pilgrim" with "the imagination of a poet," Norris chronicled her spiritual journey to a packed Cowles Auditorium in April.

### Expert Leads African-American Gospel Music Workshop



Horace Clarence Boyer, noted musician and author of *How Sweet the Sound: The Golden Age of Gospel*, led an African-American gospel-music workshop for singers and music directors

on campus in April. Boyer, who holds a doctorate in music theory from the Eastman School of Music and taught for 26 years at the University of Massachusetts, Amherst, also gave a public lecture, "The Old Ship of Zion: African-American Gospel Music."

### Gus Lee Speaks to Record Graduating Class

Best-selling author Gus Lee addressed 460 students, including his daughter, Jena Lee, from the largest graduating class in Whitworth history as keynote speaker for the college's 114th commencement ceremony, which took place May 16 in the Spokane Arena. Professor of Communication Ron Pyle spoke earlier at the Baccalaureate ceremony in the Whitworth Fieldhouse. Pyle and Associate Professor of Psychology Noelle Wiersma were voted Most Influential Professors by the Class of '04.



### Whitworth Education Professor Chosen by State Board for Award

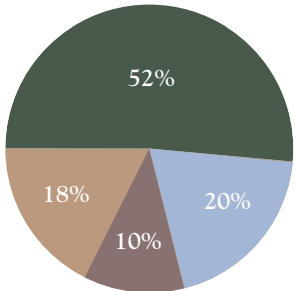
The Washington State Board of Education selected Betty Williams (pictured at left, with Gov. Gary Locke) as the recipient of the 2004

Excellence in Teacher Preparation Award. Williams is a professor of education and coordinator of the Special Education Program for the Whitworth School of Education, as well as a devoted advocate for children with disabilities.

Williams' many contributions to the field of education include her tireless work with teachers, schools, other special educators, and with local and state committees to serve students with disabilities and to provide them with well-trained teachers. She also helped to draft the state's special-education endorsement competencies and is very active in local, state, regional, and national organizations for teaching and advocacy of students with disabilities.

"I have a great passion for improving the lives of children with disabilities, and Whitworth's highly effective teacher-preparation program has given me the opportunity to introduce our students to issues and techniques in special education," Williams says. "Our graduates are equipped to be truly inclusive of all children in their classrooms and in the community."

# By the numbers



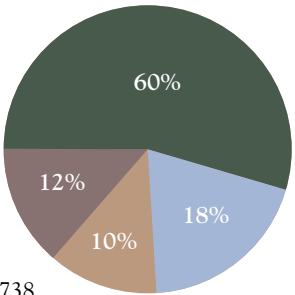
TOTAL REVENUES — \$46,040,429

● Student tuition and fees (less financial aid)	\$23,715,131
● Auxiliary services and other income	\$9,230,847
● Gift income*	\$4,706,896
● Net investment gains and losses	\$8,337,555

\*Does not include prior-year pledges paid this year.

Whitworth's financial numbers all moved in the right direction this past fiscal year. Investment income, operating revenues and fund balances were up, while long-term debt went down and our end-of-the-year budget balanced nicely.

Fueled by an excellent 17.2 percent total return on endowment investments and more than \$4.7 million in net gift income from our generous donors, Whitworth's operating revenue increased to \$46,040,429. Careful management of expenses enabled the college to finish the year with a balanced budget and to continue to invest in campus improvements such as Weyerhaeuser Hall. In addition, the college's endowment rose to \$61.4 million, providing greater financial stability and income for the future.



TOTAL EXPENDITURES — \$40,523,738

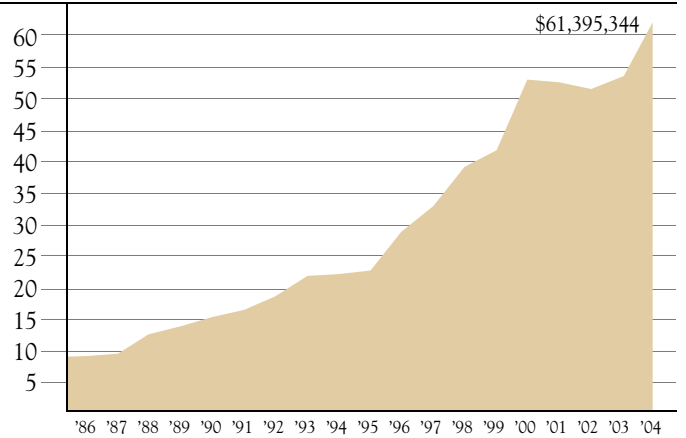
● Instructional and academic support	\$24,348,451
● Auxiliary services expenditures	\$7,298,192
● Institutional support	\$4,750,647
● Student services	\$4,106,091

In addition, the college decreased its long-term debt for the second year in a row, while total net assets increased by 5.4 percent, to nearly \$108 million. Whitworth's modest total-debt level and strong debt-coverage ratios put the college in a strong position to make strategic capital decisions in the years ahead.

We are grateful to you and to all of the people who have supported Whitworth over the years. We take seriously the faith you place in us and we pledge to use your gifts wisely to continue to provide an outstanding education of mind and heart for our students.

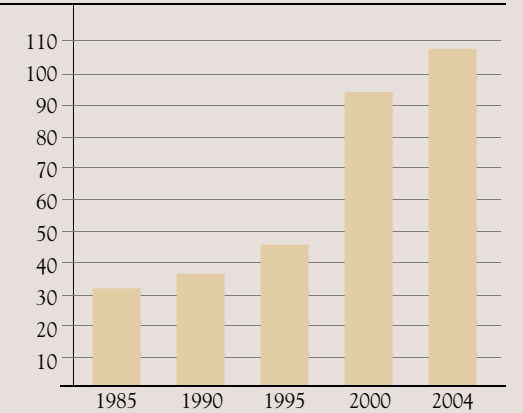
Tom Johnson, Vice President for Business Affairs  
Whitworth College

TOTAL WHITWORTH ENDOWMENT (IN MILLIONS)



'86 '87 '88 '89 '90 '91 '92 '93 '94 '95 '96 '97 '98 '99 '00 '01 '02 '03 '04

NET WORTH (IN MILLIONS)



ASSETS	2003	2004
Cash	\$9,738,926	\$7,733,497
Receivables and other assets	\$11,439,126	\$9,583,441
Investments	\$74,892,586	\$81,747,640
Property and physical plant	\$40,986,386	\$43,831,073
<b>Total Assets</b>	<b>\$137,057,024</b>	<b>\$142,895,651</b>
LIABILITIES	2003	2004
Accruals and other liabilities	\$9,464,033	\$10,298,081
Annuities payable	\$8,634,194	\$8,898,238
Long-term debt	\$16,675,581	\$15,955,625
<b>Total Liabilities</b>	<b>\$34,773,808</b>	<b>\$35,151,944</b>
<b>Total Net Assets</b>	<b>\$102,283,216</b>	<b>\$107,743,707</b>

## FIVE-YEAR GIVING SUMMARY

Year	Whitworth Fund	Other Unrestricted	Unrestricted Total	Restricted Total	Grand Total*
1999-2000	1,194,316	712,619	1,906,935	4,311,568	<b>6,218,503</b>
2000-01	1,288,152	730,216	2,018,368	4,738,410	<b>6,756,778</b>
2001-02	1,193,987	744,456	1,938,443	7,772,307	<b>9,710,750</b>
2002-03	1,000,426	926,300	1,926,726	3,861,001	<b>5,787,727</b>
2003-04	1,055,106	621,672	1,676,778	4,816,656	<b>6,493,434</b>

\*Includes all gifts, including prior-year pledge payments received this year.

## ALUMNI-PARTICIPATION RATE

Year	Participation Rate
1999-2000	25.1%
2000-01	25.3
2001-02	21.0
2002-03	22.7
2003-04	23.4

- The alumni-participation rate reflects the percentage of undergraduate degreed alumni who make a gift to Whitworth in a given year.
- While improving, the number of alumni making annual gifts to Whitworth is not keeping pace with growth in the overall alumni base, which expands by more than 400 graduates per year.
- The alumni participation rate is an important measure of satisfaction considered by outside ranking and granting organizations.
- In addition to making financial gifts, alumni can support Whitworth with prayers, volunteer service, and referrals of potential students.



## The Whitworth Foundation

Established in 1972, The Whitworth Foundation has been privileged to support the Whitworth mission of educating the minds and hearts of students by contributing gifts to the endowment fund through deferred gifts such as charitable remainder trusts, gift annuities and bequests.

Through these deferred-gift arrangements, alumni and friends can reduce or eliminate capital-gains taxes on appreciated assets, significantly reduce income and estate taxes, and provide income for the donor and/or the donor's beneficiaries. Perhaps more important to the donor is the fulfillment of philanthropic goals and the desire to benefit Whitworth College.

The Whitworth Foundation thanks all who have helped support the college's mission through deferred gifts and bequests. Your gifts truly do make a difference in the future of Whitworth College.

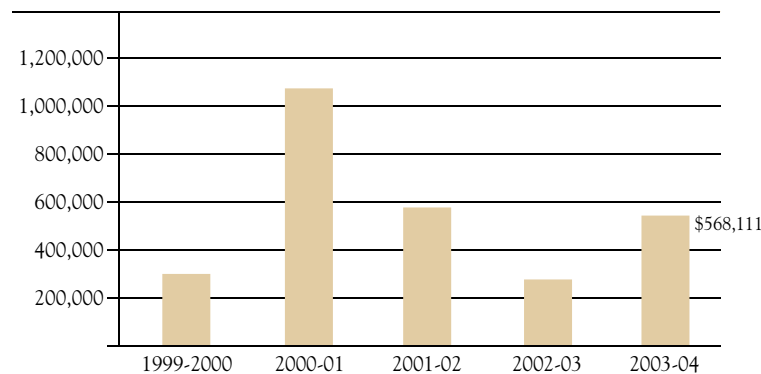
Jeff K. Johnson, President  
The Whitworth Foundation Board of Directors

## TOTAL DEFERRED GIFTS UNDER MANAGEMENT

(As of June 30, 2004)

Trusts	\$13,606,460
Annuities	2,731,278
Pooled funds	356,602
Life insurance cash value	2,510,159
<b>Total gifts</b>	<b>\$19,204,499</b>
2003-04 maturities transferred to Whitworth College	\$851,449

## NEW GIFTS TO WHITWORTH FOUNDATION\*



\*Fair market value



# from AI to MIT

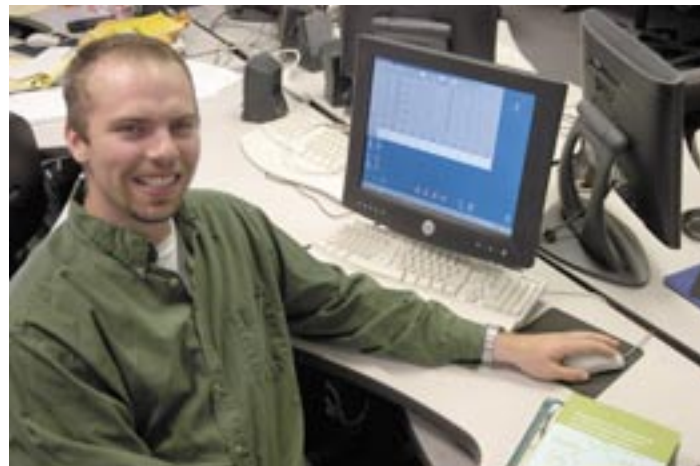
**Caleb Hug, '04, applied-physics and computer-science double-major**

You might say Caleb Hug has it made. He's being paid to go to school, and not just to any school: He's attending the Massachusetts Institute of Technology, in Cambridge, Mass.

Hug, who double-majored in applied physics and computer science at Whitworth and won a prestigious Goldwater Scholarship in math, science and engineering, received a coveted research assistantship at MIT that covers tuition and provides him with a monthly stipend. While completing his doctorate in computer science, Hug will continue the research he did at Whitworth, studying the use of artificial intelligence in computer-based medical systems.

"Whitworth was a great place to establish breadth in my studies," Hug says. "My professors went out of their way to give me experience and to help me succeed. Their help came with the knowledge that success in life is more than success in one's career, and they also provided a great example of service."

At Whitworth, Hug was part of a team of students working with professors on a project funded by the National Science Foundation to research and develop intelligent software agents to



monitor and analyze data in complex medical environments and support diagnostic and treatment decisions. Hug co-authored two papers on the team's research that were presented at international conferences – an opportunity that rarely comes to undergraduates.

Most graduates of Whitworth's computer-science program have received fellowships and/or scholarships to attend top graduate programs around the country. After Hug graduates from MIT, he plans either to teach computer science or to work in a research lab.

"Whitworth helped prepare me intellectually and spiritually for MIT," Hug says. "Whatever occupation I wind up pursuing, I know that I left Whitworth with an education of the mind and heart, ready to honor God, follow Christ and serve humanity."

# world view

**Jolene Piccolo, '05, Master of International Management**

When Master of International Management student Jolene Piccolo was selected as one of only five graduate students in the U.S. to receive an academic internship in the 42nd Graduate Study Programme at the United Nations, in Switzerland, her education began as soon as she stepped into the imposing U.N. complex.

"Seeing the room in which the League of Nations was created, and watching people of every color and dress style walk through the U.N.'s massive hallways was a learning experience in itself," she says.

Piccolo was one of 80 graduate students from more than 40 countries who gathered in July at the Palais des Nations to evaluate and make recommendations on global issues including poverty and the environment.

For the 2004 program, "The United Nations and Partnerships for Peace," participants formed working groups, under the guidance of United Nations experts, that studied issues related to human rights, the environment, and economic and social development. Piccolo joined the environment group, and,



as the only member with a background in business, she provided valuable insight and direction.

"I was able to contribute a business and economics perspective to this group of engineers, sociologists, lawyers, educators and environmentalists," Piccolo says. "My educational background in business served us well as we discussed the increasingly publicized principle of corporate-social responsibility."

Whitworth's MIM Program has taught Piccolo to think more globally, which was critical in her endeavors at the summer seminar, Piccolo says.

"For me, the most beneficial aspect of Whitworth's MIM Program, compared to similar graduate programs in the U.S., is that half of the program's participants are international students who bring invaluable perspectives and discussion to the classroom," she says. "The diversity of backgrounds and viewpoints I encounter at Whitworth has helped me hone my communication and diplomacy skills, which I used in abundance during the U.N. program."



# face the music

Michael Frederick, '04, music-performance major

You've heard sports announcers refer to an intensely scowling athlete as one who's "got his game face on today, Bob!" Turns out that, according to CNN.com, musicians around the country are now competing in a contest, sponsored by an on-demand television service, to see who has the best "guitar face." Whitworth's Mike Frederick, '04, could win that competition hands down.

The great thing about Frederick, whose facial expressions during his performances run the gamut from tortured to ecstatic, is not only that it's easy to see how "into" his music he is. It's that he doesn't just look like he's playing great music:

He creates something amazing every time he picks up his guitar.

Described by Whitworth guitar instructor Paul Grove as one of those especially talented students who come along only once every 10 years or so, Frederick has garnered much attention for his virtuosity. The trustees of The Presser Foundation awarded the young guitarist a prestigious scholar's grant last year, and Frederick earned a number of top prizes at the University of Idaho's Lionel Hampton Jazz Festival during his Whitworth career. As a freshman he took first place in the festival's jazz-guitar competition, and twice since then, in 2002 and 2004, he has received the trophy for outstanding guitar solo.

After Frederick's four years in the jazz ensemble, Music Department Chair Dan Keberle remains deeply impressed by his student's musicianship. "Mike's one of our most talented and musically expressive students ever," he says. "Not only is his jazz technique equivalent to that of most professional guitarists, but his interpretive and expressive skills are very advanced." In other words, Frederick is not only insanely gifted – he's definitely possessed of a first-class guitar face. Someone call CNN.



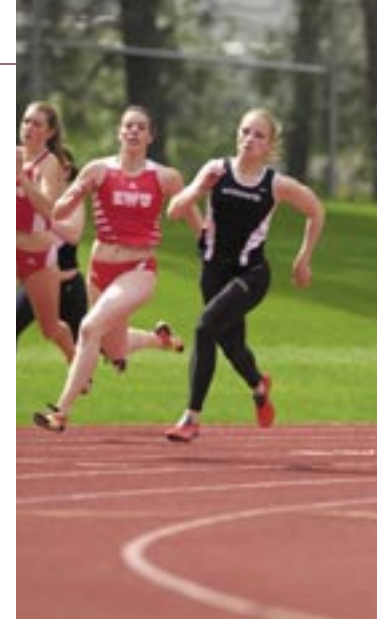
# running smart

Kristen Shields, '04, math and education double-major

Students at Liberty High School in Spangle, Wash., have reason to expect high standards from their new math teacher and track coach, 2004 Whitworth graduate Kristen Shields. And not just because of the Whitworth School of Education's reputation for preparing excellent teachers.

Shields, who completed her Whitworth career with a 4.0 GPA and an NCAA Division III national championship in the 100-meter dash, was recently named the 2003-04 college division Academic All-American of the Year. She and Emeka Okafor, of the University of Connecticut's national-championship basketball team, were honored as the two finest student-athletes in the country, chosen from among 816 Academic All-America Team members.

"Competing on the Whitworth track and field team taught me to make the most out of each day and each practice," Shields says. "I also learned that there's always something bigger than my own accomplishments: Building relationships with my teammates, practicing leadership skills, and having a positive attitude are the things that have an impact on people's lives and last beyond the glory of winning a race."



Shields says she was inspired to excel in academics and athletics by faculty and coaches who were committed to excellence. Three Whitworth education professors have received the Washington Award for Excellence in Teacher

Preparation in the last six years and Whitworth track coach Toby Schwarz has won eight conference and regional coach-of-the-year awards since 2000.

Shields, who plans to begin a master's degree in math education soon and hopes eventually to teach and coach at the college level, says she wants to pass along the lessons she learned from her role models at Whitworth.

"They not only taught me the material, they taught me that the most important part of being a teacher is to care about students," Shields says.

**GEORGE F. WHITWORTH SOCIETY****Platinum Level**

The George F. Whitworth Society honors significant lifetime gifts to Whitworth College. Platinum-level members have made current or planned gifts totaling \$1 million or more to the college or to The Whitworth Foundation.

**INDIVIDUAL**

Anonymous  
Charles L. & Karlyn L. Boppell  
\*Marketta Buckler  
\*Melvin K. & Elsie A. Fariss  
Estate of Henry F. Grinalds  
Jane Newhall  
\*Martin S. & Jean Polhemus  
\*Jeslyn M. Schultz  
John P. & E. Judith Scottford  
Arthur E. & Glenna J. Symons  
\*Ruth & \*Ingwer Thomsen  
James & Marjorie Treweek  
\*Dr. C. Davis & Annette Weyerhaesuer

**CORPORATE**

Comstock Foundation  
Egtvedt Charitable Trust  
Harriet Cheney Cowles Foundation  
Independent Colleges of Washington  
Lied Foundation Trust  
Lilly Endowment, Inc.  
M. J. Murdock Charitable Trust  
Royse-Schonwald Trust Fund  
Stewardship Foundation

**Gold Level**

The George F. Whitworth Society honors significant lifetime gifts to Whitworth College. Gold-level members have made current or planned gifts totaling \$500,000-\$999,999 to the college or to The Whitworth Foundation.

**INDIVIDUAL**

Scott & Dollie Barr  
Rev. Richard & Elizabeth Cole  
James P. & Wanda T. Cowles  
P&G Investment Co.  
\*Edwin & \*Joy Farrington  
\*Jack Griffith  
Dr. Edgar & Jean Meyer  
\*R. Chester & \*Muriel Peach  
Estate of Elaine Linden  
Estate of Gertrude A. Lindsey  
Lou S. & \*Margery Livingston  
Walter M. & Shirley A. Oliver  
Estate of Florence A. Parr  
William J. & Judi Shupper  
Dr. Jack & Joyce W. Starrett

**CORPORATE**

Avista  
Bill & Melinda Gates Foundation  
Oregon Community Pierce Trust Fund

**Silver Level**

The George F. Whitworth Society honors significant lifetime gifts to Whitworth College. Silver-level members have made current or planned gifts totaling \$100,000-\$499,999 to the college or to The Whitworth Foundation.

**INDIVIDUAL**

\*Kathleen & \*Lloyd Avery  
Dr. Emory & \*Frances Baker  
William L. & \*Beverly Bell  
Harvey & Gail Bolton  
Estate of Althea Boudreau  
Charles L. Bowman  
Annette R. Bowman  
\*John Bronson  
Estate of Maybelle Brown  
\*Fred H. & Josephine Z. Burnham  
\*Anna J. Carrel  
Scott C. & Sue L. Chandler  
Marjorie C. Chapelle  
Estate of Joan G. Chesbrough  
Estate of Harold P. Christy  
Allison Cowles Sulzberger  
Estate of Dora Swanson Dale  
Katherine & Harold Damiano  
Vida S. & Thomas Delanty  
Robert W. & Irene O. Dingman  
Leslie E. Dobbins  
Margaret Donaldson  
Ellen I. Eikrem  
\*Lucille Eikrem  
Curtis R. & Kristi Estes  
Morris & Marjorie Plotkin  
Dr. James P. & Joan Evans

Mrs. David W. Gaiser  
Estate of Sara E. Garrett  
Dr. Loren A. & \*Eleanor Gothberg  
\*Alfred O. & \*Nicolin Gray  
\*Melvin S. Hanson, Jr.  
Consuelo & Ray Hauser  
Marvin D. & Martha Heaps  
John Hedrick  
Cynthia D. Hill  
Nadine Hughes  
Estate of Alma Jepsen  
Estate of Alice Mae Johnson  
Drs. Hugh & Mary B. Johnston  
Estate of Ina H. Johnston  
\*Harry & \*Grace Kendall  
Sally J. Lash  
Marion Lay  
Ronald B. & Sally Leighton  
Merle Lepouce  
Estate of Ruth E. Lovejoy  
H. Kenneth Loveless  
\*John Marlatt  
David E. Martin  
Jean & John McCall  
Robert M. & Claire M. McDonald  
R. Miller  
\*Cliff Mollendorf  
Laurence D. & Betty Morse  
David G. & Carol P. Myers  
Leonard A. & Loretta Myhre  
Jane & Herb Myhre  
Dr. William & Bernice Nesbitt  
\*Dayne Nix  
\*Franklin W. & Margaret S. Ott  
\*Tom & Ruth Parke  
Morris & Marjorie Plotkin  
John A. & Selma Pouk

J. David & Anne Robblee  
Sharon & Kenneth Roberts  
Bill & Bonnie Robinson  
Werner & Gladys A. Rosenquist  
Estate of Marie Sanders  
Edward H. & Beverly A. Stirm  
John Thatcher  
\*Rev. Lloyd & \*Norah Thompson  
Estate of Eric H. Tobert  
Dr. Andrew Tsoi  
Irene M. & \*Archie Van Doren  
Estate of Ethyl F. White  
Estate of Tyrone W. Whitney  
Estate of Beulah Wilson Wilke  
Judith A. & Bill Williams  
William R. & Joan Yinger

**CORPORATE**

Sophie L. Anderson Trust  
Anonymous  
Associated Students of  
Whitworth College  
The Boeing Company  
Burlington Northern Foundation  
Chapel Hill Presbyterian Church,  
Gig Harbor  
Ben B. Cheney Foundation  
Christian Community Foundation, Inc.  
The Coca-Cola Foundation  
The Cowles Family  
Dornsife Family Trust  
Morris S. Ferguson Trust  
First Presbyterian Church, Bellevue  
First Presbyterian Church, Centralia  
First Presbyterian Church, Seattle  
First Presbyterian Church, Spokane  
First Presbyterian Church, Wenatchee  
First Presbyterian Church, Yakima

**Laura Thaut**

Laura Thaut, '05, a political science and international studies double-major, spent the summer of 2004 working in the political and economic division of the U.S. Embassy in Lithuania. Thaut worked the previous summer as a paid intern for the U.S. State Department in Washington, D.C., in the Office of Nordic and Baltic Affairs under the Bureau of European Affairs.

"I saw this internship as an amazing opportunity to be exposed to the dynamics of U.S. foreign policy and to study a truly fascinating region," Thaut says of her Lithuania experience.

John Fluke Manufacturing Co., Inc.  
Fred Meyer Trust  
Carl M. Hansen Foundation  
The Hearst Foundation  
Hedco Foundation  
International Business Machines  
George Frederick Jewett Foundation  
Johnston Fix Foundation  
Johnston Foundation  
Johnston-Hanson Foundation  
Kaiser Aluminum Corp.  
Manito Presbyterian Church, Spokane  
David E. Martin Architects  
Weston & Barb McGougan Trusts  
Microsoft Corporation  
Ida S. Miles Foundation  
Herman Miller, Inc.  
R. R. Miller Trust  
David & Carol Myers Foundation  
Northwestern Mutual Life Foundation  
PACCAR Foundation  
Presbytery of the Inland Northwest  
Safeco Corporation  
The Seeley Mudd Foundation  
Spokane Clearing House Associates  
Steele Reese Foundation  
Sumner Presbyterian Church, Sumner  
Symons Frozen Foods, Inc.  
Synod of Alaska-Northwest  
Telect, Inc.  
Trinity United Presbyterian Church,  
Santa Ana  
Union Pacific Railroad  
University Place Presbyterian Church,  
University Place  
University Presbyterian Church, Seattle  
U.S. Bank

Weyerhaeuser Company Foundation  
Whitworth College Auxiliary  
Whitworth College Crimson Club  
Whitworth Community Presbyterian  
Church, Spokane

**Bronze Level**

The George F. Whitworth Society honors significant lifetime gifts to Whitworth College. Bronze-level members have made current or planned gifts totaling \$25,000-\$99,999 to the college or to The Whitworth Foundation.

**INDIVIDUAL**

Estate of Catherine H. Addington  
\*Nan J. Ahlquist  
Estate of Hazel C. Akins  
Richard L. & Patricia Anderson  
Anonymous  
Alex & Barbara Gwinn Antes  
Estate of George D. Armstrong  
Estate of Sherwin P. Avann  
Dr. Forrest E. & Joy L. Baird  
Doug & Holly Barlow  
Richard L. & Mary Ann Barney  
Eldon L. & Mercedes Barton  
Odin & Deede Baugh  
Robert & Cathie Bautista  
James S. & Karla A. Bennett  
\*Elinore W. Biermann  
\*Clarence A. Black  
James P. & Doris Bower  
Robert D. & Janice Bradner  
Delores & William Brehm  
Estate of Winifred S. Browne

Dr. Frank & Beverly Burgess  
 Jack & Kristi Burns  
 Kathryn G. Call  
 Homer C. & \*Margaret M. Cardle  
 Dr. Dorothy L. Carlson  
 Estate of John A. Carlson  
 John E. & Marie Carlson  
 \*Donald & Mary Margaret Chase  
 Bill & Jo Cole  
 Dr. William & Mary Lynn Coleman  
 \*Dr. Homer & Grace Cunningham  
 William P. & Nancy R. Curry  
 Dr. A. Ross & Shirley Cutter  
 Floyd & Shirley Daniel  
 Estate of Zeola David  
 Clara & \*J. Walter Davis  
 Mrs. E. B. DeFeyer  
 \*William & \*Helen Devin  
 Mary W. & Robert Dewey  
 \*Janice M. Dingman  
 Grant Dixon III & Linda Dixon  
 Zelma M. Doig  
 \*Hal & \*Ester M. Dornsife  
 Isabel L. d'Urbal  
 Timothy R. & Nancy Eaton  
 Mark A. & Victoria Eaton  
 Dorothy & H. Glen Ellison  
 \*Emily Fetterman  
 Dr. Almon & Lois Fish  
 William C. & Harriet Fix  
 \*Robert L. Fleming  
 Estate of Lens R. Fletcher  
 Estate of Gladys I. Forde  
 Aimee M. & \*Harvey Frazier  
 Richard Friesen & Dorothy Nickel Friesen  
 Estate of Marie Goos  
 Estate of Florence S. Gowdy

James W. Grace, Sr.  
 Dr. Martin & Karen Graham  
 Estate of Lionel E. Green  
 Estate of Helen L. Greiner  
 Ruth & \*Stanley Gwinn  
 \*Dr. Garland "Gus" & Pauline Haas  
 Helen & \*Herbert Hamblen  
 R. A. Hanson  
 Richard A. & Vicky J. Hardt  
 Dr. Theodore & Carol L. Hegg  
 James & Marie Hershberger  
 Emily A. & Robert Hitchens  
 Ruby L. Hobson  
 \*Louis F. & Maudie Hopkins  
 Estate of Margaret E. Hopkins  
 Brian J. Hubbell  
 Dr. Gordon S. & Susan M. Jackson  
 William A. & Terrilynn James  
 Thomas A. & Ruth Ann Johnson  
 \*Lee & \*Evelyn Kendall  
 William M. & Barbara Kennedy  
 Drs. Lois M. Kieffaber & Alan W. Peterson  
 Sam Whan Kim  
 Marie Melrose  
 Rev. Dorothy & \*Haden Kimbrell  
 \*Dr. Marjorie M. Klein  
 \*Dr. Mark L. & \*Clara Bell Koehler  
 Dr. Catherine C. & Richard Kroeger  
 Drs. Charlotte Y. Kroeker &  
 \*Kenneth Ships  
 Gloria Laird  
 Bruce M. & Kathleen Laurie  
 Estate of Aldena Lauten  
 Ray & Caryl Lawton  
 Leavens Family Ranch  
 Curt & Heather Leavens August  
 Dr. Dorothy Leavens Carlson  
 David & Christine Leavens Cullenberg

Rev. George & Sarah Leavens Gilmour  
 Leslie Leavens-Crowe  
 Paul J. & Carolyn D. Leavens  
 Charles & Mary Leavens Schwabauer  
 \*Mildred Lemon  
 Madelyn Graybill Levy & Leonard Levy  
 \*Elmer C. & Ruby T. Lindahl  
 Geraldine E. Lindaman  
 \*Gertrude A. Lindsey  
 James S. & Margaret W. Little  
 Kent H. & Cynthia A. Lupton  
 Clavie A. & Verne W. Lupton  
 Mary B. & \*John I. Marshall  
 Phillip & Loie Mattox  
 Estate of Mildred Mattson  
 Mary Jane Maxwell  
 Sharon K. & Ronald C. McCloskey  
 Bruce & Clarabel McCullough  
 Alan & Jeannie McGinnis  
 Dorothy M. McLaren  
 Estate of Gladys A. McLaughlin  
 Robert A. & Charlotte McMullen  
 C. W. McWhorter  
 Marie Melrose  
 Estate of Aimee E. Millhouse  
 \*Marguerite Miller  
 Bertha & Dewaine Moore  
 \*Evelyn J. & \*Haydn P. Morgan  
 Dr. David F. Caldwell & Helen E. Moritz  
 \*AnnaMary Muir  
 \*Dr. Kenneth G. & \*Luella Myers  
 Susan G. & Charles R. Nipp  
 Michael E. & Betsy T. Nunley  
 Georgetta M. Nupen  
 John A. & Diane P. Packard  
 Estate of Helen O. Palmer  
 Mrs. Stanley Pattee



## Seth Hubbert

For Seth Hubbert, '04, viewing a fuzzy image of Mars through a telescope at NASA affirmed his desire to become a research scientist who can help unlock the secrets of the universe.

"I could barely make out Mars' polar caps, and, if I squinted, I could see its surface texture," recalls Hubbert, who conducted research on extrasolar planets at NASA's Ames Research Center during a summer 2003 Research Experience for Undergraduates program. "Seeing the red planet with my own eyes when it was closer to Earth than it had been in more than 59,000 years was truly a memorable experience."

Hubbert's involvement in the summer program has led to a potential collaborative research project Whitworth will undertake with NASA and San Jose State University.

Marthabelle Paulson  
 Mrs. R. A. Pearson  
 Darline Penhalurick  
 Richard V. & Joyce T. Peters  
 Jean L. Pierre  
 Carl E. Polhemus  
 James R. & Kelly Puryear  
 John Qualy  
 \*Katharine Parker Randall  
 Faith Helms Rasco  
 Chaplain Robert H. & Florence Rhinehart  
 \*Dr. Robert B. Richardson  
 \*Dr. William C. & June Richter  
 Estate of Florence Robertson  
 Claude & Janet Robinson  
 Estate of Helen Rodkey  
 Kathryn Rogers  
 Estate of Mary Rodgers  
 Rev. Harlan L. & Karen Rounds  
 Burton & \*Sandy Sanders  
 Dr. Dan & Barbara A. Sanford  
 Wendell J. & Jessie Satre  
 Mr. & Mrs. A.C. Schei  
 Barbara Sehon  
 L. Jerald & Lois Sheffels  
 James M. Simmons  
 Clarence & Koreyne Simpson  
 Dr. Gerald L. Sittser, Jr.  
 N. Jeffrey & Kristina Smith  
 Evelyn Smith  
 Peter Stanton  
 Eric & Margaret Hart Stebbins  
 Don E. & Thelma J. Steele  
 Estate of Ella Mae Stenhouse  
 Robert W. & \*Rachel Stephens  
 Estate of Evelyn R. Stewart  
 James D. & Sara L. Stewart

Estate of Ralph E. Stewart  
 Dr. & Mrs. Howard Stien  
 Dr. Kim P. & Anne Storm  
 Richard Strachen  
 David & Rev. Lorraine Stuart  
 \*Dale C. & Doris C. Swanson  
 Robert P. Swift  
 Estate of David G. Tangvald  
 I. Jean & Dr. Thomas Tavener  
 Dr. Dorahea Teeter  
 Mrs. Houston Thomas  
 Hubert & Marguerite Travaille  
 Edward B. & Donna Unicum  
 Robert G. & Marcia L. Vos  
 Elizabeth & Chad Waetzig  
 Estate of Grant R. Walker  
 \*J. P. Warner  
 Elizabeth M. Welty, M.D.  
 Carol A. & Dick Wendle  
 George H. Weyerhaeuser  
 \*Mr. & Mrs. Howard S. Whitney  
 \*M.G. Wilcox  
 Wayne & Terina Williams  
 Timothy L. & Renee A. Williams  
 Estate of Mabel C. Willson  
 Estate of Anna L. Wirth  
 Bernice Woodhead  
 Estate of Merald M. Yingst  
 Estate of Clara Young  
 John O. & Roberta L. Young

## CORPORATE

Alaska Airlines  
 Allied Systems  
 Duncan & Sophie Anderson Ed Trust  
 The Arthur Vining Davis Foundations  
 Lowell Berry Foundation

Bethany Presbyterian Church, Grandview  
 Bethany Presbyterian Church, Seattle  
 Birchwood Presbyterian Church, Bellingham  
 The Boeing Gift Matching Program  
 Edgar Boone Trust Fund  
 Calvin Presbyterian Church, Richmond Beach  
 Carnation Company Foundation  
 Central Pre-Mix Concrete Company  
 The Character Education Partnership  
 Columbia Lighting  
 Columbia Presbyterian Church, Vancouver  
 Consortium for Higher Education  
 Corona Presbyterian Church, Denver  
 The Henry Parsons Crowell & Susan Coleman Crowell Trust  
 Digital Equipment Corporation  
 Discovery Institute  
 Eastern Washington University  
 Eugene Edson Trust  
 Emmanuel Presbyterian Church, Thousand Oaks  
 Exxon Education Foundation  
 Freda Phyllis Fall Charitable Trust  
 First Presbyterian Church, Anchorage  
 First Presbyterian Church, Berkeley  
 First Presbyterian Church, Burlingame  
 First Presbyterian Church, Clarkston  
 First Presbyterian Church, Colorado Springs  
 First Presbyterian Church, Ellensburg  
 First Presbyterian Church, Everett  
 First Presbyterian Church, Hayward  
 First Presbyterian Church, Helena  
 First Presbyterian Church, Honolulu  
 First Presbyterian Church, Kennewick

First Presbyterian Church, Moses Lake  
 First Presbyterian Church, Omak  
 First Presbyterian Church, Renton  
 First Presbyterian Church, Tacoma  
 First Presbyterian Church, Walla Walla  
 Foundation Northwest  
 Fourth Presbyterian Church, Bethesda  
 Hamblen Park Presbyterian Church, Spokane  
 Mildred N. Hogue Trust  
 Carroll M. Hull Trust  
 ICM Asset Management, Inc.  
 Intel Foundation  
 International Education System  
 JGM Software, Inc.  
 Herbert B. Jones Foundation  
 John Knox Presbyterian Church, Seattle  
 Knox Presbyterian Church, Spokane  
 Kresge Foundation  
 La Cañada Presbyterian Church, La Cañada  
 La Jolla Presbyterian Church, La Jolla  
 Lafayette-Orinda Presbyterian Church, Lafayette  
 Lake Burien Presbyterian Church, Seattle  
 Lake Forest Park Presbyterian Church, Seattle  
 Lawton Printing Company  
 Leone & Keeble, Inc.  
 Lilly Fellows Program in Humanities & the Arts  
 Little Church on the Prairie, Tacoma  
 Magnolia Presbyterian Church, Seattle  
 Marine View Presbyterian Church, Tacoma  
 The J. Willard & Alice Marriott Foundation  
 Jennie Mae McCormick Trust  
 McVay Brothers



Microsoft Matching Gifts Program  
 Millwood Presbyterian Church, Spokane  
 Mt. Tabor Presbyterian Church, Portland  
 Mt. Vernon Presbyterian Church,  
 Mt. Vernon  
 National Science Foundation  
 Northminster Presbyterian Church, Seattle  
 Northwest Area Foundation  
 Northwestern Mutual Life  
 Insurance Company  
 Opportunity Presbyterian Church,  
 Spokane  
 Overlake Park Presbyterian Church,  
 Bellevue  
 Palm Desert Community Church,  
 Palm Desert  
 Pemco Mutual Insurance Co.  
 David & Dorothy Pierce Trust  
 Presbyterian Church (USA)  
 Presbyterian Seattle Prospectus  
 Qwest Communications  
 Robert & Pearl Richardson Trust  
 Safway Supply, Inc.  
 Saga Administrative Corporation  
 Sears Roebuck Foundation  
 Shadle Park Presbyterian Church, Spokane  
 Sittser Family Foundation  
 Charles & Maxine Skaggs Foundation  
 Skyline Presbyterian Church, Tacoma  
 Smarter Kids Foundation  
 Sodexho, Inc., & Affiliates  
 Solar Systems & Peripheral, Inc.  
 The Stroum Family Foundation  
 Sun Microsystems  
 Teagle Foundation  
 Texas Educational Association  
 Houston Thomas Trust

Trinity Presbyterian Church, Anchorage  
 University of Notre Dame  
 Valley Community Presbyterian Church,  
 Portland  
 Valparaiso University  
 Ventura Toyota  
 Walnut Creek Presbyterian Church,  
 Walnut Creek  
 The Wasmer Foundation  
 Wendle Motors, Inc.  
 West Side Presbyterian Church, Seattle  
 West Side Presbyterian Church, Richland  
 Westminster Presbyterian Church, Chehalis  
 Westminster Presbyterian Church, Seattle  
 Westminster Presbyterian Church, Yakima  
 Whidbey Presbyterian Church, Oak Harbor  
 Whitworth Foundation  
 William & Flora Hewlett Foundation  
 Woodland Presbyterian Church, Woodland

### WHITWORTH LEGACY SOCIETY

*Members of the Whitworth Legacy Society in honor of Jay P. Graves have established planned gifts with The Whitworth Foundation or have named Whitworth College as a beneficiary of their estate plans either through a bequest, trust, gift annuity, pooled income fund, life insurance policy or retirement account.*

Anonymous  
 Dr. Lewis F. & Jean M. Archer  
 Joshua & Shawna Armstrong  
 Dr. Emory Baker  
 H. Scott Barr  
 Marjory M. Bauer

Gerald & Lucille Bechler  
 William L. Bell  
 James S. & Karla Bennett  
 Erma & Stanton Bennett  
 Harvey & Gail Bolton  
 Charles L. Bowman  
 Annette R. Bowman  
 Virginia V. Brady  
 Vernon D. & Marie E. Buckley  
 Dr. Frank & Beverly Burgess  
 Terry R. & Gordon Burkett  
 Josephine Burnham  
 Glenn L. & Gladys H. Button  
 Donald & Mary Carlyle  
 Marjorie C. Chapelle  
 Robert W. Chatterton  
 Joyce A. & Stuart Clydesdale  
 Rev. Richard & Elizabeth Cole  
 Donna Munn Coumbe  
 William P. & Nancy Curry  
 Floyd & Shirley Daniel  
 Marguerite O. Dannenmiller  
 Clara Davis  
 Vida S. & Thomas Delanty  
 Henry L. Denning  
 Holly J. Dieter  
 Mr. and Mrs. Robert W. Dingman  
 Joseph M. & Mary Dinnison  
 Daniel & Elsa Distelhorst  
 Dr. Harry & Marjorie Dixon  
 Zelma M. Doig  
 Ellen I. Eikrem  
 Curtis R. & Kristi Estes  
 Elsie A. Fariss  
 Bud & Jean Fincham  
 Kenneth F. & Nina Foster  
 Aimee M. Frazier

Genevieve B. Gollehon  
 Revs. Stephen & Lucinda Gorman  
 Loren A. Gothberg  
 Charles Graves  
 Rev. Weston D. & Jeanne Gray  
 \*Alfred O. Gray  
 Ruth Gwinn  
 Susan P. Hagman  
 \*Melvin S. Hanson, Jr.  
 Richard A. & Vicky J. Hardt  
 Nancy Clark Hardy  
 Gretchen A. Harrell  
 Greg Hatch  
 Marvin D. & Martha Heaps  
 William R. & Ruth M. Heathman  
 John Hedrick  
 Cynthia C. Hill  
 Edwin R. & Kerry Hill  
 Ruby L. Hobson  
 LeRoy E. & Shirley F. Hook  
 Robert Hughes  
 Nadine Hughes  
 Dixie R. & Thomas Hutson  
 Rev. Andrew & Darlene Jarvis  
 Drs. Hugh & Mary B. Johnston  
 Leora & Russell Kellogg  
 Rev. Dorothy Kimbrell  
 Marian V. Kiefstad  
 Prof. Naomi Knox  
 \*Dr. Mark L. Koehler  
 Alvin B. Koetje  
 Dr. Charlotte Y. Kroeker  
 Jeanne Lagervall  
 Gloria Laird  
 Sally J. Lash  
 Marion Lay  
 Merle Lepouce

Lou S. Livingston  
 H. Kenneth Loveless  
 Kent H. & Cynthia A. Lupton  
 David E. Martin  
 Robert M. & Claire M. McDonald  
 Wendi Story McFarland  
 Dorothy M. McLarren  
 Edgar & Jean Meyer  
 Col. David E. & Doris J. Milotta  
 Laurence D. & Betty Morse  
 Dr. Robert H. & Jean Mounce  
 Jane E. Trefts Myhre  
 Dr. William & Bernice Nesbitt  
 Sunny L. Norfleet  
 Jane P. Olson  
 David R. & Elizabeth D. Olson  
 Margaret S. Ott  
 Dianna L. Pategas  
 Dorothy Pattee  
 Marthabelle Paulson  
 Darline Penhalurick  
 Richard V. & Joyce T. Peters  
 Martha D. Peterson  
 JoAnn & Richard Peterson  
 Morris & Marjorie Plotkin  
 Jean Polhemus  
 William B. & Eloise S. Pond  
 Andy Robblee  
 Kenneth & Sharon Wilson Roberts  
 Bill & Bonnie Robinson  
 Donald Rockstrom  
 Kathryn A. Rogers  
 Nick Roghair  
 Rev. James & Elizabeth Roghair  
 Werner & Gladys A. Rosenquist  
 Monroe L. Rosenthal  
 Burton Sanders



### Jena Lee

When asked to introduce the members of the Grammy Award-winning band Jars of Clay, who were at Whitworth to talk about Africa's AIDS crisis, Jena Lee, '04 (pictured at left, above, with band members), never expected that the introduction would lead to her first job. But she was so impressed with JOC's vision for providing Africans with access to clean water and AIDS education that she wrote a strategic plan for the group's fledgling Blood:Water Mission ministry. Band members were in turn so impressed with Lee's initiative that they hired her to run the ministry.

At Commencement 2004, Lee was honored with the Distinguished Collegiate Achievement Award, the Political Science Award, and the Servant-Leadership Award.

Linda Gillingham Sciaroni  
 Barbara Sehon  
 Dr. Clarence & Koreyne Simpson  
 Evelyn Smith  
 Betty Snyder  
 Dr. John E. & Holly Sonneland  
 Anne V. & Rev. Ronald D. Soucy  
 Dr. Jack & Joyce W. Starrett  
 Don E. Steele  
 Robert W. Stephens  
 James D. & Sara L. Stewart  
 Beryl McIlvanie Stoneman  
 Dallas Barbara Sutton  
 Judith Osterberg Sylte  
 Arthur E. & Glenna J. Symons  
 Dr. Doratheia Teeter  
 Margaret Thraillkill  
 \*Eric H. Tobert  
 Dorothy Travaille  
 Stephen & Carole Trefts  
 James & Marjorie Treweek  
 Geraldine Tyler  
 Irene M. Van Doren  
 Alan & Dorothy A. Villesvik  
 Beth & Paul S. Viren  
 Dr. Richard L. Waddell, Jr. and &  
 Shirley G. Waddell  
 Kyrsten S. Weber  
 Dr. Dan & Juanita Webster  
 John & Beulah Wills  
 Judi & William J. Shupper  
 Edward H. & Beverly A. Stirm  
 Robert P. Swift  
 Arthur E. & Glenna J. Symons  
 John Thatcher  
 Estate of Eric H. Tobert  
 Judith A. & Bill Williams

### THE CHAIRMAN'S CIRCLE

*The Chairman's Circle honors the chairman of the Whitworth College Board of Trustees, currently Charles L. (Chuck) Boppell, '65. Members of the Chairman's Circle contributed \$25,000 or more during the past fiscal year.*

### INDIVIDUAL

Harvey & Gail Bolton  
 Charles L. & Karlyn L. Boppell  
 Delores & William Brehm  
 Scott C. & Sue L. Chandler  
 Vida S. & Thomas Delanty  
 Curtis R. & Kristi Estes  
 Sally J. Lash  
 Lou S. Livingston  
 H. Kenneth Loveless  
 Mary Marshall  
 Robert M. & Claire M. McDonald  
 Bertha & Dewaine Moore  
 Herb and Jane Myhre  
 Jane Newhall  
 Walter M. & Shirley A. Oliver  
 Richard V. & Joyce T. Peters  
 Jean Polhemus  
 J. David & Anne Robblee  
 John P. & E. Judith Scotford  
 Judi & William J. Shupper  
 Edward H. & Beverly A. Stirm  
 Robert P. Swift  
 Arthur E. & Glenna J. Symons  
 John Thatcher  
 Estate of Eric H. Tobert  
 Judith A. & Bill Williams



**CORPORATE**

Allied Systems  
The Character Education Partnership  
Charles & Maxine Skaggs Foundation  
Coca Cola Foundation  
Egtvedt Charitable Trust  
Harriet Cheney Cowles Foundation  
Herbert B. Jones Foundation  
Independent Colleges of Washington  
M. J. Murdock Charitable Trust  
Northwestern Mutual Life Foundation  
Oregon Community Pierce Trust Fund  
Presbytery of the Inland Northwest  
Royse-Schonwald Trust Fund  
Scottford Foundation  
Stewardship Foundation  
Telect, Inc.

**FOUNDER'S SOCIETY**

*The Founder's Society recognizes the vision of George Whitworth and salutes the leaders who have embraced that vision and built Whitworth College into the institution its students enjoy today. Members of the Founder's Society contributed \$10,000-\$24,999 during the past fiscal year.*

**INDIVIDUAL**

Eldon L. & Mercedes Barton  
Gerald & Lucille Bechler  
James S. & Karla Bennett  
Jack & Kristi Burns  
Mr. & Mrs. Howard E. Butt, Jr.  
John E. & Marie Carlson

Katherine & Harold Damiano  
Curtis R. & Kristi Estes  
Elsie A. Fariis  
Paul F. Hartzell  
James & Marie Hershberger  
Emily A. & Robert Hitchens  
Estate of Alice Mae Johnson  
David E. Martin  
Alan & Jeannie McGinnis  
David G. & Carol P. Myers  
Leonard A. & Loretta Myhre  
Robert & Kathryn Novasky  
Darline Penhalurick  
\*Martin S. & Jean Polhemus  
John A. & Selma Pouk  
Sharon K. & Kenneth M. Roberts  
Bill & Bonnie Robinson  
Dr. Gregory R. & Ruth E. Sanford  
L. Jerald & Lois Sheffels  
James M. Simmons  
Jan M. & Harold Skaggs, Jr.  
Dr. Kim P. & Anne Storm  
Don A. & Janet Wallis  
Cleo & Richard Walter  
Wayne & Terina Williams  
Gretchen & Mark Wolf

**CORPORATE**

Avista  
The Boeing Gift Matching Program  
Carl M. Hansen Foundation  
David & Carol Myers Foundation  
First Presbyterian Church, Spokane  
H.E. Butt Foundation  
ICM Asset Management, Inc.  
John Fluke Manufacturing Co., Inc.  
Johnston-Hanson Foundation  
Paine Hamblen Coffin  
Brooke & Miller LLP  
Sanford Family Trust  
Jean & John McCall  
Sharon K. & Ronald C. McCloskey  
Jeanette & Jim Munyon  
Rev. Rick & Kathy Murray  
Susan G. & Charles R. Nipp  
John A. & Diane P. Packard  
James R. & Kelly Puryear  
Ansgar & Mildred Schei  
Tresa R. & Stephen Schmutz  
Dr. Jack & Joyce W. Starrett  
Eric & Margaret Hart Stebbins  
David & Rev. Lorraine Stuart  
Hubert & Marguerite Travaille  
Jeffrey M. & Debra E. Whaley  
Timothy L. & Renee A. Williams  
John O. & Roberta L. Young

**WARREN CIRCLE**

*The Warren Circle honors Frank F. Warren, president of Whitworth College from 1940-1963. Dr. Warren is remembered as one of the greatest leaders of the college and its longest-serving president. Members of the Warren Circle gave between \$5,000-\$9,999 during the past fiscal year.*

**INDIVIDUAL**

Dr. Forrest E. & Joy L. Baird  
Richard L. & Mary Ann Barney  
David J. & Jeane A. Bayens  
Drs. Laurel & Stephen Coleman  
Dr. William & Mary Lynn Coleman  
Shaun M. & Kathy Cross  
Clay & Ann Damon

Daryl D. David  
James R. Effner, Jr.  
Dorothy & H. Glen Ellison  
Peter E. & Susan L. Fern  
William C. & Harriet Fix  
Estate of Sue K. Foster  
Milton C. Hall III  
Gary L. Hames  
John Hedrick  
Robert & Diane Horan  
Ray & Caryl Lawton  
James S. & Margaret W. Little  
Kent & Cynthia Lupton  
Jean & John McCall  
Sharon K. & Ronald C. McCloskey  
Jeanette & Jim Munyon  
Rev. Rick & Kathy Murray  
Susan G. & Charles R. Nipp  
John A. & Diane P. Packard  
James R. & Kelly Puryear  
Ansgar & Mildred Schei  
Tresa R. & Stephen Schmutz  
Dr. Jack & Joyce W. Starrett  
Eric & Margaret Hart Stebbins  
David & Rev. Lorraine Stuart  
Hubert & Marguerite Travaille  
Jeffrey M. & Debra E. Whaley  
Timothy L. & Renee A. Williams  
John O. & Roberta L. Young

**CORPORATE**

Calvin College  
Chapel Hill Presbyterian Church,  
Gig Harbor  
Covenant Presbyterian Church, Austin  
Dr. Clay H. Damon  
DKB and HHB Foundation

E.S. Osborne Foundation  
Eugene Edson Trust  
First Presbyterian Church, Yakima  
Hamblen Park Presbyterian Church,  
Spokane  
Holtzbrinch Publishers  
Ila Phifer Trust  
Intel Foundation  
Lawton Printing Company  
Moore Foundation  
Northern Leasing & Rental  
The Pittsburgh Conference  
The Princess Company, Ltd.  
Robert & Pearl Richardson Trust  
Sammamish Presbyterian Church,  
Redmond  
SBC Foundation  
Spokane Teachers Credit Union  
Sterling Savings Bank  
Strategic Financial Group,  
Northwestern Mutual  
U.S. Bank  
Walker Construction  
Whitworth Community Presbyterian  
Church, Spokane

**PRESIDENT'S CLUB**

*The President's Club recognizes the service and leadership of the presidents who have charted Whitworth's course over the past 114 years. Bill Robinson, the 17th president of the college, began his tenure in July 1993. Members of the President's Club gave between \$1,000-\$4,999 during the past fiscal year.*

**INDIVIDUAL**

Timoteo Acosta  
Vicki J. Adams  
Dr. Samuel & Colleen Adams  
Virginia Ainley  
Jeff & Kathy L. Amistoso  
Anonymous  
Alex & Barbara Gwinn Antes  
Dr. Lewis F. & Jean M. Archer  
Jack R. Arthaud  
Robert C. & Susan J. Axell, Jr.  
Marilyn A. & Paul Baggs  
Dr. Emory Baker  
Alden L. & Hilary J. Baker  
Julie G. Baker  
Don D. Ball  
Sylvia Barata  
H. Scott & Dollie Barr  
Edgar T. Bassford  
Odin & Deede Baugh  
Dick & Doreen Baumann  
Bob & Cathie Bautista  
William L. Bell  
Debi Benedetti & Mark Walsh  
Kevin G. Benson  
Dr. Paul F. & Megan L. Benton  
Duane & Joanne Berentson  
Stephen A. & Lynn Black  
Dr. John C. & Dorothea Black  
John & Kristianne Blake  
Carl E. Blanford  
Dr. E. Victor & Cathy J. Bobb  
Charles L. Bowman  
Linda M. Boyles  
Robert D. & Janice Bradner  
Paul LaVern Brassard  
Mrs. LaVern Brassard

Drs. Jean & Dennis R. Brender  
Gary & Sherrille Brooten  
Kevin & Joan C. Brown  
Sheila Tatayon Brown & Kevin Brown  
Dr. F. Dale & Katherine Bruner  
Dr. J. Frank & Kathleen Bumpus  
Dr. Frank & Beverly Burgess  
Michael & Nancy Calkins  
Rev. Bob A. & Marilyn Canfield  
Estate of Geraldine W. Carlson  
Jack R. Arthaud  
Robert C. & Susan J. Axell, Jr.  
Marilyn A. & Paul Baggs  
Dr. Emory Baker  
Alden L. & Hilary J. Baker  
Julie G. Baker  
Don D. Ball  
Sylvia Barata  
H. Scott & Dollie Barr  
Edgar T. Bassford  
Odin & Deede Baugh  
Dick & Doreen Baumann  
Bob & Cathie Bautista  
William L. Bell  
Debi Benedetti & Mark Walsh  
Kevin G. Benson  
Dr. Paul F. & Megan L. Benton  
Duane & Joanne Berentson  
Stephen A. & Lynn Black  
Dr. John C. & Dorothea Black  
John & Kristianne Blake  
Carl E. Blanford  
Dr. E. Victor & Cathy J. Bobb  
Charles L. Bowman  
Linda M. Boyles  
Robert D. & Janice Bradner  
Paul LaVern Brassard  
Mrs. LaVern Brassard

William D. & Shae Dixon  
Grant Dixon III & Linda Dixon  
Janice R. Dixon  
Vickie & Hal R. Dixon  
Grant Dixon, Jr.  
Dr. Harry & Marjorie Dixon  
Zelma M. Doig  
Dana & Dave Dornsife  
Dr. Philip W. & Sharon Eaton  
Mark A. & Victoria Eaton  
Dr. Valerie K. & R. Bruce Eckley  
Jani L. & Joel C. Ehlo  
Cherie A. Ekholm  
Peter J. Elliott  
Diane Elliott-Lee & Gus Lee  
Peter & Patsy Enkema  
Andrew T. & Caroline J. Erickson  
Dave G. & Karen M. Erickson  
Dr. Richard V. & Lottie S. Evans  
Dr. James P. & Joan Evans  
Bruce G. & Linda L. Faulk  
Elizabeth Felgenhauer  
Dr. Donald E. & Joycelyn Ferguson  
Gail W. Fielding  
Peter R. Fisher  
David J. & Lisa J. Flesher  
K. Larson Floor  
Jean B. Flora  
Paul & Sheila Forsyth  
Ken Foster  
Revs. Dr. Quinn & Nancy Fox  
Mark T. & Christine L. Frey  
Earl & Linda K. Fujitani  
Gordon E. Fyfe  
George & Marilyn Gauntlett  
Mac & Becky Gebbers  
Rev. Harlan L. & Shirley Gilliland

H. Rand & Judith W. Ginn  
 Sandi Jo Goddard  
 Allen J. Good  
 Thomas M. & Sandy Goodenow  
 Cliff & Dottie Goss  
 James W. Grace, Sr.  
 Dr. Martin & Karen Graham  
 Rev. Ruth Gray  
 Rev. Richard L. & Darlene J. Gronhovd  
 Pauline Haas  
 Karen & Michael Habib  
 Dr. Benjamin C. Hammett  
 Richard A. & Vicky J. Hardt  
 Greg J. & Julie Hatch  
 Marvin D. & Martha Heaps  
 William R. & Ruth M. Heathman  
 Rev. C. Theodore & Edith Hegg  
 Janet M. & David L. Hicks  
 Cynthia C. Hill  
 Verla L. & Gerald J. Hill  
 Virginia & Bill Hoefl  
 John T. & Traci Hoffmann  
 Carolyn M. & Edwin R. Holmes  
 Laura Hook  
 Gary J. & Mary R. Hopkins  
 Dr. M. Richard & Susan Hornor  
 Henry M. & Sharon Hoshino  
 Brian J. Hubbell  
 Dr. David K. Hughes & Sharon McGill  
 Dolores J. & Jeff Humiston  
 Mary Jane & Richard W. Hungate  
 Dixie R. & Thomas Hutson  
 Robert & Arlene Ingersoll  
 Dr. Gordon S. & Sue Jackson  
 Dr. Norman J. & Theresa E. James  
 Frances & Richard Jester  
 Rev. Gordon & June Jewett

Thomas A. & Ruth Ann Johnson  
 Jeffrey K. & Katherine Johnson  
 Drs. Hugh & Mary B. Johnston  
 Margaret Ann Jones  
 Luther D. & Dee L. Jonson  
 John & Ruth Kallenberg  
 Terry M. & Cynthia J. Kelly  
 Nancy & Pat Kennedy  
 Robert Kerrigan, Jr.  
 Virginia E. & Raymond Ketzler  
 Laurena A. Ketzler-Kerber & Keith Kerber  
 Randy & Susan Kimmerly  
 Keith & Elizabeth J. King  
 Dr. John & Ratana King  
 Frank C. & Sherry Knott  
 Ronald F. Knox, Jr.  
 William W. Koch  
 George & Sandra L. Kovats  
 Ron & Nancy Krantz  
 Robert A. & Kristin M. Krueger  
 Andrea J. Lairson & Robert Gomulkiewicz  
 Marlene J. & Glen R. Larson  
 Bruce M. & Kathleen Laurie  
 Susan M. & Vincent R. Lee  
 Ronald B. & Sally Leighton  
 Dr. Richard H. & Carolyn Leon  
 Merle Lepouce  
 Madelyn G. & Leonard Levy  
 Marla Brassard Litchford  
 Dr. Arch Logan, Jr.  
 Kerri A. & Eric M. Luther  
 Dr. B. Kenneth & Janine Lyons  
 Dr. Patricia A. MacDonald  
 Shawn C. Mackey  
 R. Alan Magnuson



## Erik Lystad

Erik Lystad, '05, a chemistry and pre-med major, won a \$12,400 U.S. Government National Security Education Program David L. Boren Scholarship that allowed him to study in Hong Kong during the 2003-04 academic year. One of 183 undergraduate students chosen from an applicant pool of 760, Lystad pursued studies in chemistry and Chinese language and culture at the University of Hong Kong.

"Ever since I was little I knew I would be a medical missionary; I just didn't know where," Lystad says. Having previously studied Mandarin Chinese, Lystad is looking at western China as his medical-ministry destination.

Dr. Dennis & Darlene Mahlum  
 William W. & Norma Main, Sr.  
 Douglas H. Main  
 Nancy J. & David E. Matthews  
 Phillip & Loie Mattox  
 Jean & John McCall  
 Karen & Christopher McCullough  
 Bruce & Clarabel McCullough  
 Nancy K. & Greg McGinnis  
 Terry & Suzette McGonigal  
 Dorothy M. McLaren  
 Robert A. & Charlotte McMullen  
 Scott A. & Janice L. McQuilkin  
 Alice & Daryl McQuilkin  
 Marie Melrose  
 Randall B. & Maureen Michaelis  
 Arlin & Judith Miglizzo  
 Grant T. & Catherine L. Miller  
 Kenneth L. Moen  
 Dorothy R. & Dr. Roger Mohrlang  
 Rev. Dr. Raymond & Anita Moody  
 Donald S. & Barbara G. Moore  
 Scott L. & Lizbeth A. Morris  
 Laurence D. & Betty Morse  
 Su-Ellen M. Mortland  
 Sandra G. & Raymond Moser  
 James F. & Maureen Motteler  
 Cai Moxley  
 Rev. Rick & Kathy Murray  
 Rev. Daniel & Charlyn Myers  
 Tokio & Misao Nakagawa  
 Ervin J. & Margaret K. Nalos  
 Rev. Mark & Jennifer Nazarian  
 Benson A. & Jo Ann Nielsen  
 Juli K. Noble  
 Georgetta M. Nupen  
 Aldryth & Brian O'Hara

Dr. Leonard A. Oakland  
 Walter E. & Marianne T. Olson  
 Todd and Kirstin Orwig  
 Greg A. & Kristin M. Orwig  
 Sunzash Park  
 Dr. Pamela C. & Robert J. Parker  
 Rev. Gayle B. & Tom Parker  
 John & Hilary Parker  
 Dianna L. & Greg Pategas  
 H. Leslie & Georgene R. Patten  
 Mrs. R. A. Pearson  
 Dr. Robert D. & Lylia Peck  
 Frederick R. Pfursich  
 Jean L. Pierre  
 Jennifer Pifer  
 Eloise & Thomas G. Piper  
 Morris & Marjorie Plotkin  
 Capt. William D. Pocklington, USN Ret., & Bess Pocklington  
 Mark E. & Cathy Poe  
 Don & Joanne Poe  
 Carl E. Polhemus  
 Joel N. & Irene M. Predisik  
 Faith Rasco  
 John C. & Kelly E. Rasmussen  
 Lyle D. & \*Magdalene Rauch  
 Lois A. & Dr. Howard A. Redmond  
 Dr. Tammy R. & Larry S. Reid  
 Heather A. Rempel  
 Tirzah E. & Richard A. Riley  
 Michelle & Andy Robblee  
 Timothy J. Robblee  
 Claude & Janet Robinson  
 Bill W. & Jane Roffler  
 Werner & Gladys A. Rosenquist  
 Peter F. Said  
 Don & Jeannie (Hansen) Samuels

Dr. Dan & Barbara A. Sanford  
 Robert Sarkissian  
 Wendell J. & Jessie Satre  
 Florence Reynolds Sayre  
 Dr. Richard & Teresa Schatz  
 Mr. & Mrs. Bob Scheel  
 Barbara Sehon  
 Rev. Bruce M. & Janet Sexton  
 Charles E. & Hilda Shalhbetter  
 Dick & Connie G. Silk  
 Rev. Dr. Jim & Sara Singleton  
 Stacey K. & Shaun B. Smith  
 Dr. Dorothy P. Smith  
 N. Jeffrey & Kristina Smith  
 James & Julie Snell  
 Rev. & Mrs. Ronald B. Snelling  
 Dr. Dale & Peggy Soden  
 Beth A. & Aaron J. Soderlund  
 Maria & Peter Sommer  
 Walter J. & Mary Spangenberg  
 Bob & Rebecca Sparks  
 William A. & Gerry L. Sperling  
 Durand Splater & Linda Allen  
 Eric & Margaret Hart Stebbins  
 Dr. Dennis W. & Karen L. Sterner  
 Drs. Karen & Richard Stevens  
 Dr. & Mrs. Howard Stien  
 Steven L. & Cynthia Streimer  
 William M. Stronks  
 Janet M. & Peter J. Stuart  
 Richard & \*Barbara Stussi  
 Doris C. & \*Dale C. Swanson  
 Linda D. & Steven W. Swartley  
 Lori & Jeff Sweeney  
 Deb & Jack Talley  
 I. Jean & Dr. Thomas Tavener  
 Dr. Dorathea Teeter

Carol G. & Richard Terrell  
 Charles G. & Nancy S. Tewinkel  
 Elisabeth P. Thompson  
 Dr. Mark J. & Cyndi M. Toone  
 David M. & Suzanna G. Trail  
 Hubert & Marguerite Travaille  
 Robert L. & Dee Tschilar  
 Dr. Andrew Tsoi  
 Nathan D. Ulrich  
 Kyle B. & Trisa M. Usrey  
 Edward R. Van Vliet  
 Robert G. & Marcia L. Vos  
 Kenneth D. Walker  
 Carole & James R. Walker  
 Katherine M. & Charles Watson  
 Mark W. Weakley  
 George & Dorine Weber  
 Mary L. Lannigan & Robert Weinland  
 Celeste Yamashiroya-Welch & James H. Welch  
 Elizabeth M. Welty, M.D.  
 Carol A. & Dick Wendle  
 Helen & \*Lt. Col. William V. Williams  
 Steve & Terri Wilson  
 Tad & Katie Wisenor  
 Gerald L. & Laurel Wisenor  
 Robert & Ariel Witbeck  
 Bernice Woodhead  
 Dr. James & Susan D. Woods  
 Frances J. Wright  
 James A. Wright  
 Wm. W. & Carol A. Wurts  
 James Y. & Regina L. Yan  
 Dr. David V. & Grace C. Yeaworth  
 William R. & Joan Yinger  
 David & Nancy Youngs

## CORPORATE

Alma M. Templeton Trust  
 Alton's Tire  
 American Express  
 B Bar T Cattle, Inc.  
 Bacon Concrete, Inc.  
 Birchwood Presbyterian Church, Bellingham  
 Boeing Surplus Store  
 Campbell Soup Foundation  
 Central Pre-Mix Concrete Company  
 Charitable Gift Fund  
 Chevron  
 Coca-Cola Bottling Company  
 Colbert Presbyterian Church, Colbert  
 Columbia Lighting  
 Columbia Paint & Coatings  
 Columbia Presbyterian Church, Vancouver  
 Costco Wholesale  
 Duncan & Sophie Anderson Ed Trust  
 Edgar Boone Trust Fund  
 Estate of Marguerite Michael  
 First Presbyterian Church, Bellevue  
 First Presbyterian Church, Burlingame  
 First Presbyterian Church, Centralia  
 First Presbyterian Church, Colorado Springs  
 First Presbyterian Church, Ellensburg  
 First Presbyterian Church, Kennewick  
 First Presbyterian Church, Las Placitas  
 First Presbyterian Church, Moses Lake  
 First Presbyterian Church, North Bend  
 First Presbyterian Church, Prosser  
 First Presbyterian Church, Walla Walla  
 First Presbyterian Church, Wenatchee  
 Fosse Foundation  
 Freda Phyllis Fall Charitable Trust

Frederick O. Watson Foundation  
Gemini  
Group Health Cooperative  
Guardian Life Insurance  
The Guardian Life Insurance Co.  
Hagan Foundation  
Hahn Engineering  
Jennie Mae McCormick Trust  
Johnston Fix Foundation  
Katharine Swenson Trust  
Knox Presbyterian Church, Spokane  
Lafayette-Orinda Presbyterian Church,  
Lafayette  
Laguna Beach Presbyterian Church,  
Laguna Beach  
Leone & Keeble, Inc.  
Lukins & Annis, P.S.  
Mac Gebbers Orchard  
Marine View Presbyterian Church, Tacoma  
Marsh Advantage, Inc.  
Menlo College  
Microsoft Matching Gifts Program  
Mitsui & Co.  
Mt. Vernon Presbyterian Church, Mt. Vernon  
Nike Northwest Team Division  
Northwest Basketball Camps, Inc.  
Parkway Presbyterian Church, Tacoma  
Pepsi-Cola Company  
Piper Jaffray Companies, Inc.  
Potlatch Foundation II  
The Presser Foundation  
Principal Financial Group Foundation  
Q13/WB22 Cares Fund  
Rainier Investment Management  
Ramey Construction Company  
Safeway Supply, Inc.  
Schwab Fund for Charitable Giving

Sequim Presbyterian Church, Sequim  
Shadle Park Presbyterian Church, Spokane  
Shelton Presbyterian Fellowship, Shelton  
Sheraton Seattle Hotel & Towers  
Skyline Presbyterian Church, Tacoma  
Sodexho  
Solar Systems & Peripheral, Inc.  
Southminster Presbyterian Church,  
Des Moines  
Spokane Food Services, Inc.  
St. Andrews Presbyterian Church,  
Redondo Beach  
State of Washington  
Sumner Presbyterian Church, Sumner  
Sun Microsystems Foundation  
Sunnyside Presbyterian Church, Sunnyside  
Suntoya  
Thrifty Car Rental  
Tieton First Presbyterian Church, Tieton  
United Parcel Service Foundation  
United Way of New Mexico  
University Place Presbyterian Church,  
University Place  
Valley Presbyterian Church, Paradise Valley  
Verizon Foundation  
Wagstaff, Inc.  
Washington Mutual Foundation  
Wells Fargo Foundation  
Wendle Motors, Inc.  
West Side Presbyterian Church, Richland  
Westcoast Hospitality Corporation  
Whidbey Presbyterian Church, Oak Harbor  
Whitworth College Crimson Club  
William W. Kilworth Charitable Foundation  
Woodland Presbyterian Church, Woodland  
Woodland Presbyterian Church, Memphis  
Ziegler Lumber Company

### PRESIDENT'S CLUB GOLD

*The President's Club GOLD offers full membership in the President's Club to alumni of the past ten years who gave on a scale between \$100 and \$500 during the last fiscal year, depending on the year they graduated. The acronym GOLD stands for Graduates of the Last Decade. More information on this unique giving club can be found at [www.whitworth.edu/ClubGOLD](http://www.whitworth.edu/ClubGOLD).*

Jeff J. & Maile E. Aden  
Joshua & Shawna Armstrong  
Charise M. Asunción  
Julia L. Axell  
Ara Balkian  
David B. & Pamela S. Barnes  
Lisa & Greg Bartel  
Elisabeth A. Beal  
Jennifer A. Bennett  
Erin R. Benson  
Mariel M. Besmer  
Jana B. & Matthew L. Bouma  
Alan W. Bradley  
Benjamin C. & Sarah E. Brody  
Tristan S. Brown  
Lynnette T. & Andrew R. Brown  
Elizabeth & Jeremiah Case  
Daniel T. Clapp  
Adam B. Cleaveland  
Allison B. Cleaveland  
Julia D. Colgan  
Joshua D. Cowart  
Christopher A. & Jolyn Dahlvig

Rachel E. & Seth M. Dombach  
Elliot B. & Whitney J. Edwards  
Jason M. & Lisa E. Fligor  
Kyle A. Forsyth  
Jamie A. & Sidney M. Friedman  
Brian K. & Erin D. Hackwith  
Andrew C. Hall  
Heather F. & Andrew Haner  
Kara L. & Scott M. Hansen  
Craig R. Hardt  
Virginia & Alex Hill  
Mary A. Hubele  
Luke P. & Marla L. Hyder  
Amber J. Isaac  
Stephen D. Jost  
Deborah L. & Donald Kaufman  
Adam D. Knudson  
Mary A. Krogmann  
Rev. Robert & Diana Lantz  
Matthew E. & Corrie L. Lemberg  
Elizabeth H. Lockard  
Jennifer L. Marshall  
Leslie A. Martin  
Rachal L. & William R. Mather  
John C. & Meghann L. May  
April L. & Keats C. McGonigal  
Jeremy D. McMillen  
Jason P. & Virginia M. Morgan  
Brian H. Moser  
Jennifer Nelson  
Nicholas A. Newberry  
Robert & Wendy Olson  
Kerry M. & Kevin C. Parker  
Cody A. Person  
David A. & Heidi M. Pommer  
Susan Powell  
Damian P. Putney



Katie M. & Kelson Ramey  
Nancy J. & Wayne A. Rau  
Caleb J. Reaber  
Mary Ressa-Myers & Tom Myers  
Edwin F. Rivera  
Brenna K. Robinson  
Nick Roghair  
Sujay Sahni  
Richard A. & Nancy A. Sargent  
Anna Kristine Schowengerdt  
Jessica & Charles Shawley  
Robert P. Shields  
Jacob W. Spaun  
Autumn M. Stevick

Dr. Richard & Sally Strauch  
April K. Szuch  
Janet A. & Chris Brandvold  
David Van Wie & Elizabeth Meyer Van Wie  
Bradley R. Vardy  
Melinda A. Wenny  
Scott K. Yoshihara  
Cole J. & Kristen A. Young  
Miranda R. Zapor

### HARDWICK ASSOCIATES

*The Hardwick Associates Club is the namesake of Dr. Francis T. Hardwick, former dean of the college. Dr. Hardwick established his legacy at Whitworth as a beloved leader, scholar and mentor in the 1930s and 40s. Many recognize his name from the Hardwick Union Building, which stood on campus from 1958 to 1995. Hardwick Associates gave between \$500-\$999 during the past fiscal year.*

### INDIVIDUAL

Stephen D. & Sherry Adell  
Larisa & Jeremy Affeldt  
Anonymous  
Ruthann Assmus  
Bradley & Peggy Baker  
Megan F. & Peter J. Barnett  
Dr. Leslie & Cynthia Becker  
Dennis J. & Sarah Beemer  
Breean Beggs & Laurie Powers  
Robert P. Shields  
Jacob W. Spaun  
Thomas J. & Verna L. Black

\*Evelyn F. Blackwood  
Dr. Laura J. Bloxham  
Janet A. & Chris Brandvold  
James H. & Honore Breymeyer  
Peter W. & Joan M. Bruce  
Gail B. & Timothy D. Bruce  
Sten & Stephanie Carlson  
Dr. Lee Anne Chaney  
Rose M. Clark  
Ronald R. & Patricia A. Cramer  
Dr. Jerry C. & Lorna J. Crooks  
Richard M. Cross  
Mark & Linda Cutshall  
Beth Ann Day & Ben Rinzler  
John S. & Jeanette L. Detlor  
Joan & Ron M. Detrick  
Mary W. & Robert Dewey  
Holly J. Dieter  
Allayne L. & Gene Dinkel  
Margaret P. Doane  
Darrell A. DuChene  
Jimm E. Edgar & Bettie Dakota  
Joyce Elsner  
Marcia B. & Dr. David Erb  
Sandra V. Fardal  
Barbara W. & Jonathan E. File  
Linda L. Finlay  
Leland E. & Julie D. Fish  
Jon W. Flora & Shannon Williams Flora  
Dr. Ronald G. & Marianne Frase  
Sharon R. & Bruce Fraser  
John C. Freeman & Laurie Caslake  
Todd R. & Brenda Frimoth  
G. Michael & Annajean Goins  
Richard S. & Patricia Grandy  
Estate of Helen L. Greiner  
Rick Griffin

Rev. Donald & Barbara Griffin  
Robert Grimm  
Dr. Samuel T. & Linda Gulley  
Marie-Elizabeth E. & Richard H. Haase  
Ronald D. & Sally Haffner  
Jeannette S. & Thomas A. Haley  
Judith S. & Carl Hastings  
Steven L. & Debbie Heathman  
John M. & Mary Jane Hee  
John M. Heily  
Irma & Dr. Bruce Heiple  
Ralph L. & Dorris Heritage  
Keith N. Hickox  
Margaret A. & Myron Hillman  
Leslie L. & Anna Mae Hogan  
Anne B. & Perry Hunter  
Dr. Michael T. & Jaylynn Ingram  
Kathie Jacobsen  
Anna Lee & Darrell G. James  
Eric H. & Susan B. Johnson  
Elouise S. Schumacher & John W. Johnson  
Alan S. & Christine M.H. Kaul  
Esther M. & Richard A. Kletsch  
Ann L. Kough & John Kennedy  
Dr. Charlotte Y. Kroeker  
Thelma Jo & Harold Landon  
Ada & Jon P. Langhout  
Joyce & Warren Lashua  
Barbara L. & James Leahey  
Drs. Doris K. & Don H. Liebert  
Sue & Dr. Michael Liff  
M. Elizabeth Lindsay  
Henry & Lina Louie  
Craig & Elizabeth Lundeberg  
M. Bruce & Kathleen McCullough  
Paul & Amy McDonald  
Phil & Sue Meister



Stephen T. Mellinger III  
 Donald & Marcia Mikiska  
 Mary Moldenhauer  
 Phillip & Jeanetta Monfort  
 Dr. David F. Caldwell & Helen Moritz  
 David A. Morley  
 Kimberly J. & Paul Morris  
 Kathleen K. & Charles Neir  
 Bryce & Bonnie Nelson  
 Dr. David M. & Lynne Nelson  
 Kelly & Brigitte Norwood  
 Rev. Ronald D. & Nancy Oldenkamp  
 Nadine & Rev. Kenneth E. Onstot  
 Cathy B. & Steve C. Ormiston  
 John & Hilary Parker  
 Helen F. & Mark Pines  
 Sarah E. & Wayne A. Pommer  
 Ronald & Julie Pyle  
 Kathe L. Reed-McKay & Dale McKay  
 Stephen D. & Kristen Renz  
 Robert F. Rice  
 Jared H. & Sharon P. Richard  
 Dennis J. & Jan E. Rieger  
 Dr. Edward T. & Rev. Renee Riley  
 Anne H. & Don S. Roberts  
 Dr. Grant V. & Dorothea Rodkey  
 Melanie & Robert Rose  
 Stanley M. & D. Elizabeth Rottrup  
 Robert & Barbara Rutherford  
 Megumi Sakihana  
 Drs. Dennis F. & Jessie Salisbury  
 Barbara & Herbert Sanders  
 Mary M. & Gary Sanford  
 C. Philip & Shirley Schiller  
 Jennifer Seyler  
 Christianne L. Sharman  
 Mark & Becky Sheffels

Luella L. & John Sheldon  
 Philip F. & Deanne Silva  
 Dr. James N. & Salli Sledge  
 William & Carolyn Slippem  
 R. Scott & Twylla Smith  
 Alta Southworth  
 Rick & Kelley Spelman  
 Joanne & James Spring  
 Dr. Richard R. & Connie Stacey  
 Daniel & Nanette Stark  
 Don E. & Thelma J. Steele  
 Dr. Kathleen H. Storm  
 Rev. Paul D. & Kathleen Strawn  
 Dr. Arnold & Diane Stueckle  
 Thomas J. & Susan H. Summerson  
 J. Shannon & Janet Sweatte  
 David & Betsie Tanza  
 Sharon & Gary Travis  
 Todd M. & Trisha L. Tripp  
 Dennis C. Trotter & Trina M. Johnsten  
 Mrs. C. R. Trzcinski  
 Emi Tsuji  
 Howard H. & Cynthia M. Turner  
 Colleen Van Vliet  
 John & Janey Van Wingerden  
 Lee H. & Donita J. Walker  
 Kim E. & Diana Warner  
 Dr. Gordon C. Watanabe  
 Drs. Susan A. & David Weber  
 Craig A. & Sharon M. Weddle  
 Dr. Ronald C. White  
 Dr. Howard G. & Miriam K. Wilcox  
 James W. & Jamie Will  
 David R. & Tracy S. Williams  
 Bruce L. & Karen Williams  
 Rev. John F. & Denise Williams  
 Gwendolene & Edward Wittmann

Benjamin & Carol Young  
 Rev. Herbert C. & Laura Young

## CORPORATE

Abbott Industries Fund  
 A.M. Landshaper  
 Apple Tree Inn  
 Bank of America Matching Gifts  
 Bank of Fairfield  
 Ben Bridge Jewelers  
 Bitterroot Valley Bank  
 Brett Bros. Bat Company  
 Breymer Orchards  
 Calhoun Trust Fund  
 Columbia Paint & Coatings  
 Community Presbyterian Church, Post Falls  
 Continental Mills  
 Cup of Cool Water Ministry  
 Dennis Brender, D.D.S.  
 Eagle Helicopter  
 Edwards Lalone Travel  
 Emtman Brothers Farms  
 Espresso Delights  
 Eugene Saunders Estate Trust  
 Colleen Van Vliet  
 First Presbyterian Church, Ephrata  
 First Presbyterian Church, Missoula  
 First Presbyterian Church, Oregon City  
 First Presbyterian Church, Port Townsend  
 FM Global Foundation  
 Folsom Presbyterian Church, Folsom  
 Foothills Lincoln, Mercury, Mazda  
 Foster-Tukwila Presbyterian Church,  
 Tukwila  
 The General Electric Foundation  
 Grandview Presbyterian Church, Glendale  
 Gwin, White & Prince, Inc.  
 Hewlett-Packard Company

International Business Machines  
 Japanese Presbyterian Church, Seattle  
 La Verne Heights Presbyterian Church,  
 La Verne  
 Lamar Outdoor Advertising  
 Mac & Cass Nursery  
 Mark Cutshall Creative Services  
 Merrill Lynch & Co. Foundation, Inc.  
 Micron Government Computer Systems  
 Millwood Presbyterian Church, Spokane  
 Moloney, O'Neill, Corkery & Jones  
 National Association of Women  
 Business Owners  
 Newport Presbyterian Church, Bellevue  
 North Creek Presbyterian Church,  
 Mill Creek  
 Northminster Presbyterian Church, Seattle  
 Olds Memorial Trust Fund  
 Onalaska Presbyterian Church, Onalaska  
 Palm Desert Community Church,  
 Palm Desert  
 Premier Development, Inc.  
 Pro Heating & Air Conditioning  
 Puryear Motivation, Inc.  
 Quality Inn Oakwood  
 Robert & Dora Bradburn Memorial  
 Trust Fund  
 Roosevelt Recreational Enterprises  
 Sherwin-Williams Foundation  
 Silk & Associates  
 Silver Bow Fly Shop  
 Smith Memorial Presbyterian Church,  
 Fairview  
 Sonderren Packaging Co., Inc.  
 The Spokesman Review  
 State Farm Companies Foundation  
 Tomlinson Black North, Inc.

Trinity United Presbyterian Church,  
 Santa Ana  
 UPS Store  
 Washington State Auto Dealers  
 Westminster Presbyterian Church, Chehalis  
 Westminster Presbyterian Church, Yakima  
 Westminster Presbyterian Church,  
 Los Angeles  
 Wildhorse Resort & Casino  
 Women's Christian Association, Seattle  
 Xilinx, Inc.

## CAMPANILE CLUB

*The campanile stands at the center of the Whitworth College campus. At the midpoint of The Loop, the campanile is remembered for tolling hymns as generations of students have walked to class. The Campanile Club honors those who have given \$250-\$499 during the past fiscal year.*

## INDIVIDUAL

Todd Ackerman  
 Dr. James R. & Gloria J. Adams  
 Marvin L. & Patricia L. Adams  
 Philip & Patricia Aijian  
 Diana & James Alessi  
 Charles K. & Nancy Anderson  
 Anonymous  
 Gary W. & Barbara A. Ash  
 Terrell G. & Susan K. Atwood  
 Jean B. & David B. Avison  
 W. Jeff & Corrin G. Bare  
 Douglas C. & Holly Barlow  
 Lois & Ronald Barndt



## Cynthia Wright

Athletic-training student Cynthia Wright, '06, learned valuable skills during summer 2003 as a physical-therapy volunteer assistant at a missionary hospital in Quito, Ecuador. For nine weeks she assisted with basic rehabilitation, therapeutic modalities, exercises and acute care for orthopedic conditions. "It was a challenge, especially with language and cultural differences, but it was rewarding — and the people were wonderful," Wright says.

Scott M. Barrett  
 Alan R. & Dorothy Belyea  
 Erma & Stanton Bennett  
 Gregory & Verda Benson  
 Dr. George L. & Mary E. Benson  
 Drs. Cheryl & Stephen Benz  
 Paul & Robbi Bielec  
 Joan Bevan Birdsell  
 Andrea L. & Boo Boatman  
 William & Sonya Bolton  
 Larry E. & Gail Boose  
 Dr. Charles C. & Edyth Bovee  
 Kent Brennan  
 Ernie & Tauni Broennle  
 Marcia & Steven W. Brown  
 Roger J. & Jan Brown  
 Christopher J. & Jilleen Broyles  
 Vernon D. & Marie E. Buckley  
 Michael & Amy Burkesmith  
 Elizabeth H. Buxton  
 Dr. Hans E. & Janet M. Bynagle  
 Jeffrey & Kimberly Carlson  
 Rev. Glenn Carlson  
 Liz & Neil Cawood  
 Dr. Michael L. & Patricia Christianson  
 Allen C. & Anna M. Clark  
 Robert S. & Charlene Clark  
 Ceil Cleveland & Jerrold Footlich  
 Richard Close  
 David & Joyce Coleman  
 Dr. J. Bruce & Ann Brooks Coleman  
 Nancy S. & Reuben Collins  
 Lance J. & Marilyn K. Colyar  
 William A. & Mary Lou Converse  
 Lori & Ron Craig  
 Mary G. Crandal  
 Peter M. Crane

Loren C. Davidson  
 Jack R. & Lisa Day  
 Mel & Kendal Detrick  
 Susan & Kent Diamond  
 Paul H. & Sylvia B. Dilgard  
 Roy & Barbara Dimond  
 Joan M. & Thomas A. Dodd  
 Rev. Robert M. & Marie P. Duryee  
 Kyle G. & Heather Colburn Edberg  
 Michael G. & Nicole Edmunds  
 Brent A. & Jennifer L. Edstrom  
 Kathryn A. & Roy C. Emory  
 John & Michelle Estelle  
 Beverly E. & Dr. Martin Faber  
 David & Lynda Fisher  
 Neil D. Fitch  
 Cheryl A. & Thomas Forbes  
 James I. & Patricia H. Foster  
 Marybeth & Thomas Fox  
 Rhea & Tim Freeman  
 Dr. Warren D. Friedrichs  
 Dana & Daniel Funrue  
 David Gall  
 Gerry H. & Treva Gallaher  
 Stephanie & Michael Garnett  
 Dan & Reba Gebbers  
 Katherine & Michael Gemmet  
 Janis K. & Garfield T. George  
 Jayne Brill Giffin  
 Doris & Larry Gilbert  
 Gladys H. Ginter  
 Roger & Joed Glaser  
 Susan D. & Dr. Frank Gontarski  
 Kate & Mark Gosling  
 Dr. Edward & Shirley Gotts  
 Kathryn R. Gottschalk  
 Linda J. & Paul K. Graham



Stanley R. & Jeanette Graham  
Christine M. & Ron Gregory  
Cathryn R. Griggs  
Erlene & Spike Grosvenor  
Ann K. & Matthew Gruner  
Karen L. & John C. Habbestad  
Stanley J. Haemmelmann  
Nadeane Hale  
June K. & Mark Hanson  
Gretchen A. Harrell  
Heather L. Harwell  
Rand T. & Susan G. Hatch  
Dr. Theodore & Carol L. Hegg  
Bill & Gail Heinemann  
Karen E. & Spencer Holden  
C. Ann Hollifield & Lee Becker  
Mary I. & Paul Hosoda  
Diane & Stephen Howell  
Anne B. & Perry Hunter  
Cheryl A. & Joel C. Hunter  
Julie & Robert C. Hutchinson  
Dan & Julie James  
Oscella James Gage & Tim Gage  
Rev. Andrew & Darlene Jarvis  
Victor & Gloria Joe  
Kent L. Jones  
Glenn H. & Jean C. Jung  
Alan S. & Christine M.H. Kaul  
Dr. & Mrs. William M. Kelly  
Michael K. & Karen Kimmel  
Donna L. & Neal King  
Beth A. Knutson-Roe  
Drs. Donna & Richard Koerker  
Kathleen S. Kopczick  
John H. Krogman  
Janice G. Leighton  
Donald Patrick Leinweber

Carol M. & John Lewis  
Dr. James C. & Mei Lin  
Dr. Gregg & Randi Longmeier  
Thomas J. Lucas  
Allen L. & Alyson M. Martin  
Michael S. & Roberta A. Martin  
Laurie A. & Mark S. Matkin  
Lois R. McConnell  
Shauna L. McFadden  
Andrew & Wendi Story McFarland  
Scott & Nicole McKay  
Dr. Stanley D. McKenzie  
Aaron P. & Darcy S. McMurray  
Rev. Dr. Richard E. & Carol Melin  
Ted & Betsy Merchant  
Richard M. & Tammy J. Merrill  
Nancy D. & Scott Metcalf  
Judith A. & Robert L. Meyer  
Jackie R. & Ellen Miller  
Allen H. & Betty Miller  
Perry A. Morton  
Alfred C. & Nancy H. Moss  
Miriam B. & Donald A. Murray  
Michael & Sandra Myers  
Bernard O. Nelson  
John R. & Suzanne R. Nevers  
Ronald H. & Charlene G. Nilson  
Jennifer L. & Mark D. Nuzum  
Gerald D. O'Callahan & Teira Davies  
Mary E. & S. Roger O'Dell  
Vernon F. & Patricia Oertel  
Douglas & Shirley Oglesbee  
Nancy J. & Gene Oltmann  
Daniel C. & Susan W. Ott  
Les Paullin  
Kenneth & Tammie Pecka  
Jane Marie Pence

Sharon A. & Jeff Pence  
Rev. Eric E. & Lynn Peterson  
Susan F. & Mark A. Peterson  
JoAnn & Richard Peterson  
Dr. William O. & Betty Pfeiffer  
Karla & Randy Phillips  
Pamela J. & Mark E. Pierce  
Larry B. & Donna Pilcher  
Clyde O. & Colleen M. Pock  
Mark G. Prentice  
Robert D. & Sheila Quall  
Katie M. & Kelson Ramey  
Rev. Roland S. & Patty Rasar  
Joan K. & Cory M. Ray  
Rev. Albert J. & Catherine Reasoner  
Margaret A. & Peter Reed  
Col. Carol A. & Todd Reineck  
K. Wendell Reugh  
Rev. Robert H. & Florence F. Rhinehart  
Elizabeth & Edmund Ricksecker  
Rev. Robert H. & Anita Rigstad  
Jon N. & Karen S. Robbins  
Victor & Elaine Rodriguez  
Gary R. & Linda L. Roedl  
Rev. James & Elizabeth Roghair  
Doug Rowell  
Harlem D. Sandberg  
Barbara & Herbert Sanders  
Bernice & Billy Schnerr  
Dr. Judith A. Schoepflin  
Susan M. & Glen Scholtes  
Jay & Karen S. Schrader  
Dr. Toby C. Schwarz  
Jon Semke  
Linda L. & Randy C. Shaw  
Scott A. & Kimberly Shaw  
Mary H. Shepard

David B. & Patricia S. Sherve  
Dr. Gerald L. Sittser, Jr.  
R. Stephen & Patti Smith  
R. Scott & Twylla Smith  
J.R. & Patricia A. Snell  
Dr. John E. & Holly Sonneland  
Jean T. & Thomas A. Souter  
Carol C. & Carl J. Stark  
Dr. Robert W. & Diane Steffer  
Betty L. Stratton  
Beth K. & Ted Streeter  
Luke Y. & Kimberly L. Teruya  
Daniel J. & Kebra L. Thompson  
Connie & James Thomson  
Paul S. & Donna K. Tikker  
Milton & Ethel Tschache  
Howard H. & Cynthia M. Turner  
Rev. Kenneth & Bonna J. Turney  
Jim H. & Bonnie Upchurch  
Dr. Mark R. & Lynn Valeri  
David H. & Anita Van Haften  
Beth & Paul S. Viren  
Foyann L. & Don Vogler  
Jo Ann Wagstaff  
Lorna & Scott Wallick  
Mr. & Mrs. Hideo Watanabe  
Sally M. Weakley-Casey  
Cathie & Jay Wegryzn  
John H. Wells, Jr.  
Hal D. & Maureen L. Whitman  
Robert Wigren  
Timothy & Judy Williams  
Shawn E. & Jane Wilson  
Kenneth J. & Jo Ann Wittenberg  
Janet L. Wright  
Reid T. Ziegler  
Mary E. & Vern E. Ziegler

## CORPORATE

AAA Washington/Inland  
American International Group  
Bank of America  
BEHR Paints & Stains  
Best Western Tuscan Inn  
at Fisherman's Wharf  
Bielec, Inc.  
BP Matching Funds Programs  
Bristol Myers Squibb Foundation  
Brundage Mountain Company  
Cashmere Presbyterian Church,  
Cashmere  
ChevronTexaco Matching Gifts Program  
Clark Construction Group, Inc.  
Community Presbyterian Church, Du Pont  
Congregational Presbyterian Church,  
Lewiston  
Corkery & Jones Benefits, Inc.  
Cozzetto Coin-Op Company  
Cyan World, Inc.  
D'amato Conversano, Inc.  
Dayne Nix Trust  
Doubletree Hotel  
Eastmont Presbyterian Church,  
East Wenatchee  
Evans Education Trust Fund  
Evergreen Presbyterian Church, Graham  
First Presbyterian Church, Davenport  
First Presbyterian Church, Helena  
First Presbyterian Church, Othello  
First Presbyterian Church, Quilcene  
Future Ford  
Gross Hatch & Associates  
Group Health Cooperative of  
Puget Sound  
Hampton Inn

Hieber Properties  
Hotel Lusso  
Huppin's Hi-Fi, Photo & Video  
Jim Burke Ford  
Lake Forest Park Presbyterian Church,  
Seattle  
Law Offices of Frank Hoover, P.S.  
Lockheed Martin Corporation  
Lone Canary Winery  
Naches Presbyterian Church, Naches  
Northern Capital Management, Inc.  
Occidental Petroleum Charitable  
Foundation  
Okanogan Presbyterian Church,  
Okanogan  
Olmstead Trust  
Passport Unlimited  
Pemco Financial Center  
Poe Asphalt Paving, Inc.  
Procter and Gamble  
River Odysseys West  
Sodexo Inc. and Affiliates  
The Swinging Doors  
Trinity Presbyterian Church,  
Sedro Woolley  
United Way of King County  
United Way of Spokane County  
United Way of Thurston County  
Wheat Ridge United Methodist Church,  
Wheat Ridge  
Wurts & Associates



## PINE CLUB

*The Pine Club, named for the stately trees that are a campus hallmark, includes those who have given up to \$249 during the past fiscal year.*

## INDIVIDUAL

Susan J. & Robert Aasen  
Bruce & Barbara Abbey  
Nancy & Howard Abbott  
John C. & Shannon T. Abernathy  
Bonnie & Ronald A. Abernethy  
Matthew & Nicolle Ableidinger  
Virginia & Gary Abraham  
Randy & Sammi Absalonson  
Nancy B. & Wayne Acheson-Smith  
Patricia & Thomas Achterman  
Rev. Douglas R. & Janet Acker  
Bruce E. & Lorraine Ackley  
Wendy J. Acosta  
Stuart N. Adams  
Benjamin M. & Jenny R. Adams  
Keith M. & Janet K. Adams  
Robert S. & Nancy Adams  
Kelley J. & Robert Adams  
Louise & Roy Adams  
Marlene A. Adkins  
Nancy & Charles Adkison  
Dr. William & Virginia Ailes  
Mary A. Ainley  
Rev. William W. & Nancy Ainley  
Robert S. & Marilyn M. Ainley  
Fay I. & George A. Aitcheson  
Jeffrey R. Aitken  
Mary A. Alberts  
Scott D. Albertson  
Tonia K. Alderman  
Sandra F. Alderman  
Richard A. & Patricia L. Alderman  
Lois Aldrich  
Laurie M. & Eric Alexander  
Pat & Rebecca Alexander  
Lynn M. & Russell S. Aley  
Alice L. & Chester W. Allbee  
Fae A. Allen  
Armande A. & William L. Aller  
Jessica M. Alley  
Jack Alley  
Christi & William Allison  
Catherine Alsgaard & Dr. Steven Miller  
Betty & Rev. Russell Alsgaard  
Patricia A. & Ray Althaus  
Betty Ames  
Merlyn L. & Gretchen Anderberg  
Richard Andersen & Ursula Schorn  
Christie P. & Mark S. Anderson  
Adam N. Anderson  
Hope K. Anderson  
Michael M. & Jeannie Anderson  
Mary K. & Richard F. Anderson  
Lowell L. Anderson  
Barbara P. & John F. Anderson  
Donald & Patricia Anderson  
Betty M. & Earl R. Anderson  
Douglas K. & Deborah Anderson  
Eric J. Anderson, M.D.  
Neill E. & Anne Anderson  
Carilyn M. Anderson  
Rev. Rebecca & Gary Anderson  
Mike W. & Patricia Anderson  
Paul G. & Miriam Anderson  
Kay W. & Ken Anderson  
Theodore H. & Patricia A. Anderson

Holly J. & Sano Anderson-Haldi  
John Andonian  
Daniel & Wendy Annis  
Shirley R. & Charles Antak  
Robyn K. & Richard M. Antush  
Mary R. & Denis Apple  
Ian D. Arbuckle  
Cynthia M. & Marcos Archuleta  
Bruce L. Arfmann  
Leslie Argueta-Vogel & Teofilo Argueta  
Edward & Sandra C. Arildson  
Jeffrey & Angela Arkills  
David & Patty Arkills  
Laura L. & A. Leon Arksey  
Rolland F. & Dorothy Armstrong  
L. M. Arndt  
Peter L. & Char Arthur  
Dr. Walter M. & Marlene Arthur  
Diana E. Asahara  
Geoffrey & Brandi Asan  
Mary Ann & Jack Ashlock  
Sonja M. & Scott A. Asper  
Denise A. H. & Steve Asplund  
Karen G. & Dr. Osama Assad  
Milton Y. Atebara  
Anna M. Atkinson  
Joyce N. & Wayne L. Attwood  
Jennifer & Michael Atwood  
Faye & Jon Atwood  
Eric P. Avery  
Nancy E. & Dale Avery  
Jean B. & David B. Avison  
Kathryn Aya  
Megan E. & Samuel J. Aylor  
Jonathan & Sandra Bachelder  
Roger A. & Garnet Bacon  
Karen L. & Kelvin B. Badgett

David R. & Patricia Baer  
Beth & James A. Baer  
Richard L. & Pamela H. Bagnall  
L. Carol Bagwell  
William A. & Avis Bailey  
F. Dean & Muriel Bailey  
Jeff W. & Sydney T. Schaller  
Julia A. & Robert Baisch  
Bruce L. Arfmann  
Jolene E. Baker  
Eugene W. & Stacy J. Baker  
Danial E. Baker  
Robert J. Baker  
Ann M. & David Baker  
Clifford A. Baker  
Gene & Pamela Baker  
Warren L. & Aida Baker  
Charles A. & Wendy Baker  
Irma Baker  
Barbara L. & Teddy R. Bakken  
Gary D. & Glenda J. Bakken  
Harold Balazs  
Matthew D. & Sarah J. Baldock  
Patricia & Patrick Balestrieri  
Betty Jane Ballasch  
Scott C. & Robin Ballentyne  
Melinda J. Bandy  
Jeanette & Robert Bandy  
Suzanne L. & Eric J. Bantilan  
Norma M. Bantillo  
Miriam M. & Gary Barckert  
Heather M. Bare  
Alan & Sue Bare  
Dorean A. Bare  
Joan L. & James B. Barlow  
Elizabeth L. Barnes  
Q. R. & Beverly G. Barnes  
Rusty L. & William Barnett

Chris D. & Lisa Barnhart  
Erika Ann Barquist  
Bertha C. & Neal Barr  
Michael D. & Kelli K.C. Barram  
William A. & Stephanie Barth  
Ann Bartholomew  
Chad D. & Susanne L. Bartlett  
Mary & Lawrence A. Baskett  
Juanita E. & Thomas L. Bass  
Myles T. Bassford  
Dana K. & John A. Bates  
Gary & Barbara Bates  
Marcia E. & Rev. Kevin Bates  
Sharlene & Eric Bathum  
Michelle & Erik Batsford  
Greg Baugh & Tanya Onzuka  
Joanne & Raymond Baytos  
Robert A. Beach  
Bradley W. & Katharine K. Beal  
Geraldine & Clay Beal  
S. Lynn & Brian Beaumont  
Margaret M. & Stanley V. Bech  
Evelyn R. & Roger J. Beck  
Daniel & Jo A. Beck  
Angela N. & Bradley Beck  
Scot C. & Carrie Becker  
Terry D. & Nancy E. Beckham  
Rev. Keith Beebe  
Roger D. Beebe  
Todd R. & Bobbie Beese  
Richard D. Beeson  
Melissa E. Beimes  
Phyllis & William Beimes  
Jillian M. & ALEN K. Bell  
Catherine L. & Rodger S. Bell  
Evan W. & Shirley Bell  
John & Terria Bell



Christina Gaines

Christina Gaines, '06, was selected as the recipient of the Woodrow Foundation Scholarship, which covers the full cost of tuition and books – about \$21,700 – for the 2004-05 academic year.

Gaines exemplifies service and leadership through her involvement in Whitworth's Bonner Leaders Program, a two year, service-based, work-study position that promotes student, campus and community development. Gaines also volunteers at Anna Ogden Hall, a shelter for women and children, and she holds a leadership position as a medic in Whitworth's freshman residence hall, participates in several small-group Bible studies, and leads second- and third-grade students at Flight School, a children's church program at Spokane's Shiloh Hills Fellowship.

Elizabeth E. & Ed Bell  
David S. & Melanie Bell, Jr.  
Jonelle D. & James Bellis  
Jeff Belote  
Joanne M. & Garth M.P. Benham  
Leanna Benn  
Douglas V. & Lynda M. Benjamin  
Maridean F. & William H. Bennett  
Lyman W. & Geraldine Benshoof  
Edwin C. & Jane A. Benson  
Doris & Dan Berg  
Gail W. & Marvin Bergeleen  
Kristy & Rev. Greg Bergland  
Lorraine J. Bertelson  
Claudia & Gerald F. Bertholf  
Elaine Bessey  
Chris & Tracy Betcher  
Lynda Betts  
Connie W. & Russell Betts  
Jason & Mandy Bhear  
Paul & Robbi Bielec  
Brad & Phyllis Bierlink  
Carolyn L. Bigbee  
Bill Bigbee  
Michelle A. & Roger Bighouse  
Robert & Kara Billingsley  
Jolly R. Bilstad  
Allison P. & Michael Birch  
Eunice R. & William L. Birk  
Richard H. Bishop  
Jack & Patricia Bishop  
Donald E. & Hazel Bishop  
Lynn & Michael Bishop Petouhoff  
Susan Bittner-Bonebakker & Peter Bonebakker  
Albert & Bonnie Bjerkestrand  
Julie R. & Tom Bjornberg

Stanley M. & Lola A. Blackwell  
Deneen Blake  
Steve & Cheryl Bland  
Jeffrey & Kathy Blank  
Heidi L. & Steve Blankenship  
Ellen & Stephen Blaschke  
John B. & Bobbie Blessent  
Gregory M. Blessing  
Travis Q. Blevins  
Maia E. Blom  
Everett & Priscilla Blomgren  
Hilma & George Bloomsburg  
Drs. Rex V. & Jeanne Blumhagen  
Don J. Bocksch  
Mary June Bocksch  
Suzanne Boddy  
Melanie T. & Joseph C. Boehm  
Elaine Boehmer  
Katherine O. & Edward Boersma  
Julia E. Bohman  
Denise & Brent Bohman  
Kathryn H. & Fred T. Boice  
Helen & Monte Boisen  
Lois & Vernon Boje  
Christine & Donald Bollinger  
Stuart W. & Cindy Bond  
Louis & Eirene Boni  
Stan D. Bonner  
Patricia A. Bonner  
Joyce Bookwalter  
Ann & Daniel Bopp  
Milton D. & Nina Borgardt  
Rev. Harold & Ida Borhauer  
\*Patricia Bories  
Lawrence F. & Nancy Boris  
Julie A. & Berge Borrevik  
Sandra & Eugene Borsheim

William & Marla Borton  
John E. & Barbara J. Borton  
Karina N. Boslet  
Jacqueline & John Boslet  
Victoria & Dr. Thomas Boubel  
Lee & Carrie Boulet  
Amy & Lawrence Boushey  
William Bruce & Gail Bouslough  
Michael L. Bovee  
C. Ed & Lora J. Bowler  
Mark D. & Emily R. Bowker  
Carolyn & Dr. Gary A. Bowker  
Dennis J. Bowyer  
Nancy J. & Victor C. Boyles  
Alan & Judy Bradley  
Alan & E. M. Bradley  
Beau Bradley  
Rudy L. Bradshaw, Jr.  
Monica L. Bramble  
Jane & Bill Brand  
Chris W. Brandenburg  
Susayn Brandes  
Cheryl A. & Robert Brandt  
Katherine A. Branigan  
M. Louise Branson  
Donald & Dorothy Branson  
Betty Brask  
Rev. James & Andrea Brassard  
M. Patricia & Walter J. Braten  
Shannon L. Braun  
Marian R. & Roy Breckenridge  
Monty & Elaine Brekke  
John E. Brennan  
Nancy O. & Steven A. Breth  
Donna & Dr. Robert C. Brewster  
Mildred Lynn Brezinski  
Phyllis Bristow-Johnson

Robert & Christine Broaddus  
Sarah D. Brock  
Richard W. & Amy G. Brock  
Elizabeth T. Brodie  
Dr. Frederick & Marguerite C. Bronkema  
Nancy Brookie-Connor & Tod Connor  
Paula Brooks  
Dorothy C. & Gerald L. Brooks  
Rev. Michael A. Brothers & Lauren McFeaters  
Richard T. Brower, Jr.  
Ada B. Brown  
Wayne J. & Julie E. Brown  
Juliane C.M. & Andrew A. Brown  
Susan M. & Charles Brown  
Dr. Raymond K. & Suzanne M. Brown  
Muriel C. Brown  
Roger J. & Jan Brown  
Joyce Brown-Feldman & Hank Feldman  
Kent W. Browning  
Jeanne & Robert Browning  
Nicholas N. Brownlee  
Betty J. Bruce  
Robert L. & Shirley Bruce  
Erik J. Brucker  
James & Jerry Brucker  
Sally & Dr. Benjamin Brucker  
Katherine A. & Don Brummett  
Darlene J. & Harlan Bruner  
Andrea M. & Frank Bruno  
Chris L. & Teresa M. Bruzzo  
Carol S. Bryan  
Marilou O. Buan  
Howard & Kathy Buchanan  
Sylvia S. & Alvin F. Buchholtz  
Rev. George W. & Lois Buchin  
Ruth & Duane Buchtel

Kathryn & Theodore Buck  
Gordon & Rhoda Budke  
Alan D. & Nancy Budzier  
Chad W. Buehler  
Nancy Buehner-Rees & Thomas Rees  
Marilyn A. Buergele  
Alice J. Bullick  
Marguerite E. Bullock  
Janice E. Burbank  
Edward A. Burch  
Howard & Janice Burger  
Gail V. Burger  
Nancy C. & Ernest Burger  
Linda & Dan Burger  
Dale H. & Marilyn R. Burgeson  
James W. & Jodi J. Burke  
Terry R. & Gordon Burkett  
Randy & Delon K. Burkhardt  
Clarice A. Burkhardt  
Wendy Burlison  
Brenda Burns  
Hyacinth Burt  
Lynnette & Robert W. Burwell, Jr.  
Shelley A. Bussard  
Eleanor M. & James Butchart  
James & Lori Butcher  
Steven A. & Sara Beth Butts  
Marcia & Ron Buys  
Kathryn L. & Ronald E. Buys  
Gordon L. & Phyllis D. Bybee  
Carrie & Chris Byrd  
Felipe S. & Roseanne C. Cabana  
Joseph M. & Nancy L. Caddy  
Dr. Donald F. & Casaundra L. Calbreath  
Lois M. Calkins  
Beth & Eric Calkins  
Lu Alice & Gary Calkins

Christopher D. & Lisa Call  
Lori L. Call  
Christine & Richard Callaway  
Larry R. & Phyllis Calvert  
Wayne Campbell  
Elise M. & Peter F. Campbell  
K. Scott & Kathy Campbell  
Carol Steven Campbell & Don I. Campbell



L. Graham & R.L. Campbell  
DeLona & Martin Campos-Davis  
Julie & James Canan  
Eileen & John Candioto  
Rodrigo Cano-Galvis & Cristina Hoyos  
Lorna & Wayne G. Cantley  
Danny P. & Hawley Ann K. Cappel  
Robert C. & Brandi Carbee  
Homer C. & \*Margaret M. Cardle  
Thomas E. & Anne M. Cardle  
Laura J. & Coleman Carle  
Scott B. & Mary C. Carlsen  
Drs. James C. & Mary-Baird Carlsen  
Dr. Charles & Elizabeth Carlson  
Katherine L. Carlson  
Patricia C. & Robert Carlson  
Jollie A. & Leonard Carlson  
Elwood J. & Dea J. Carlson  
Dr. Vicki Carlson & John Bowen

Dr. Charles & Betty Carlson  
Don & Mary Carlyle  
Rachel M. Carnes  
Leo & Betty Carolan  
Brian E. Carpenter  
Dr. Keith W. & Michelle N. Carpenter  
Shirley K. Carpenter  
Carmen J. Carpenter  
Cindy D. Carr  
Beth E. Carr  
Virginia A. & John Carr-Studer  
Gerald & Patricia Carrell  
L. Sue & Robert Carroll  
Lenore & Mark Carroll  
Cynthia & Charles Carroll  
Melody R. Carrothers  
Jeri J. & Jim Carstairs  
Henry & Yvaughn Carstensen  
Cheryl & Dennis A. Carter  
Marilyn & Harry Carter  
Carolyn M. Cary  
Timothy G. Casey  
Beverly & Fred Casey  
Esther Caton  
Neil & Tamara Caulkins  
Roberta B. Cauvel  
Patricia A. Cavalier  
Gena R. Celebrado  
Douglas & Sally Cey  
Linda L. & Michael Chairez  
Rev. William & Norine Chalmers  
Barbara Champion  
Rev. Jack Chan  
Low C. & Jeanette Chan  
Richard L. & Gunay J. Chance  
Carl & Mary Ann Chandler  
Susie M. Chang & Bradford Eldridge

LaRinda M. & Kevin Chapin  
Marie Chapman  
Alice E. Chapman  
Daisy M. & Hugh F. Chapman  
Mary S. Chapman  
Kimberly & Robert Chapman  
Douglas A. & Emmary Chapple  
James R. & V. Kay Charbonneau  
Janice K. & Dennis Chase  
David V. Chattergy  
John D. Cheek  
Michael G. Ching  
Richard S. & Muriel M. Chiolis  
Carol Chipman  
Dr. Alice & Eric W. Chrisinger  
Gertrude A. Christ  
Chrisann T. Christensen  
Hans P. & Lee A. Christenson  
Donna J. & Barry Christiansen  
Peter & Teri Christianson  
Dennis Christianson  
Rebecca J. Dakin & Theodore C. Christman  
C. Dean Chu  
Francis & Winona Chun  
Diana E. Churchill & Douglas Herman  
Dr. James & Karen Churnside  
Emily M. & Craig Chute  
Richard C. & Virginia Cizik  
Robert J. Clancey, Jr.  
Dr. Donald N. & Linda A. Clark  
Willy V. Clark  
Larry E. & Nancy Clark  
Margaret Louise & Percy Clark  
Naomi V. Clark  
Treva & Robert Clarke

Karen L. & Tom Clarke  
Patti L. Clatchey-Vincent & Ronald Vincent  
Julie C. & Robert B. Clausen  
Rev. Douglas & Sharon G. Clegg  
Neil L. Clemons  
R. Jean Clemons  
Margery M. & Kenneth Clewett  
Eva Clifton  
Florence & Gordon Clinton  
Donald G. & Gerri M. Cobb  
Bonny & Jeffrey Cochran  
Bruce E. & Georgia Cockerham  
David & Marcia Cocking  
Constance J. Cogley  
Elizabeth & Sheldon Cohen  
Dorothy M. & Merle D. Cohu  
Ruth L. Col  
Gordon H. Cole  
Barbara J. Cole  
Craig & Cynthia Collings  
Brenda J. Collins  
Connie Collins  
Col. Joseph E. & Caroline Collins  
Noel G. Commeree  
Robert I. & Judy Conacher  
Toni & William Condon  
Dennis D. & Judy Conger  
Mary & Pat Conklin  
Margaret Meriwether Connell  
Cheryl & Gary Connor  
William A. & Mary Lou Converse  
Mark W. Converse  
Richard R. Cook  
David E. & Laurie C. Cook  
Margueritte Cook  
June M. Cook

Freida I. & Dave Cook  
Camille M. Cooke  
John C. & Roselie M. Cooney  
Georganne M. Copas  
Barbara A. Cornehl  
Gladys Cory  
Blair P. Cosman  
Wendy & Matt Costello  
Marydiane & Douglas Coster  
Orphajean & Richard Cotes  
Susan E. Cotter  
Laura A. Cotton  
Eugene A. & Irene Cotton  
W. Donald & Susan B. Couch  
Ethelwyn Couch  
Claudia N. Couch  
Barbara J. & Harold J. Coult  
Donna Coumbe  
Donald R. & Carolyn J. Cowan  
Patricia D. Cowen  
Joy & Trevor Cox  
Janice J. & Earl L. Cox, Jr.  
Traci & Bill Crab  
Charles G. & Janae Crabtree  
John & Kay Cragg  
John Craig  
Karen A. & Scot D. Crandal  
Regina A. Cranston  
Edwin E. & Carl Crawford  
Kenneth D. & Linda Crawford  
Eva F. & Robert A. Creason  
Lyle E. & Shirley L. Crecelius  
Irene J. & Robert Crichton  
Jason & Laura Critchfield  
Bob & Joanne Crites  
Rev. David W. & Dorothy E. Crockett  
Diane & John Cronin

Frederick H. & Bunny Cronkrite  
Thomas & Lorraine Crouch  
Robert A. & Cindie Crowell  
David A. Crowley  
Gail L. Crum  
Dale & Marilyn Crutcher  
Judith B. & Harry A. Cuff  
John & L.J. Cumming  
Joyce C. Cunningham  
Nancy L. & Robert Cunningham  
Douglas A. & Cindy Curtis  
Diane R. & Bret Curtis  
Bruce C. & Lisa M. Cutter  
Carolyn J. Cutter & Andrew Chang  
Kurtis L. Dale & Delene M. DeForest-Dale  
Audrey & Daniel Dale  
Dr. Sharon Daloz Parks & Larry Parks Daloz  
Jeanne & William Dalton  
Andrew S. Dalzell  
Joseph & Karman L. Daniel  
David L. & Mary Daniels-Lee  
Kristin D. Dashen  
Alan G. & Karin D. Dashen  
Marcia K. Dashiell  
Brian Davenport  
Gladys B. & Marvin C. David  
M. J. Davidson  
Elaine K. & Charles Davidson  
Mary E. & Eric B. Davis  
Evelyn J. & Kenneth M. Davis  
Kathy R. & Jim Davis  
Patricia Nordskog Davis & Mike Davis  
Steven E. Gregg & Kristina Davis-Gregg  
Sharon E. Dawson  
Richard J. & Julie Day

Lillian De Keno  
Tom & Nellie Dejong  
Vicki & Joel Devries  
Dr. Alice H. & Roger Deakins  
Dr. Gerald S. & Patricia Dean  
Rev. John R. Deckenback & Rev. Carolyn L. Roberts  
Nancy Decker  
Viola B. & Leslie Deibert  
Craig L. & Jane S. Deitz  
Yvonne A. Deitz  
Mauri L. & Michael Demerjian  
Terry E. & Brent E. Demko  
Edward A. & Karen G. Demko  
Arlis A. & William L. Denney  
Darrin & Stephanie Dennis  
Mari C. & John Densmore  
Jody & John Depew  
Robert H. & Sharon M. Depew  
Rev. Keith & Jennifer Devries  
Gregg DeVries  
Bruce & Gayle Devries  
Thomas & Elaine Dezutter  
Susan E. Dickinson  
Dorothy & Ernest Didier, Jr.  
Larry & Midge Dier  
John F. & Kristin W. Dierdorff  
Ernest W. & Wanda M. Dieterich  
Rogina R. & Frank Dietz  
Margaret C. Dikes  
Revs. John W. & Sylvia C. Dilworth  
Alta J. Diment  
Ellen Dimond  
Roy & Barbara Dimond  
Maj. Ronald A. & Patty Dinger  
Nancy & Robert Dings  
Rick E. & Christine D. Dinning

Anita N. & M.Sgt. Brett Distel  
Nathan R. Distelhorst  
Ruth A. Dobriski  
Sherry & Michael Dodson  
Richard A. & Linda M. Doehle  
Randy & Susan C. Dohrmann  
Patricia L. Dole  
Christina L. Dolven  
Larry N. & Nancy Domrese  
Andrea & Ryan Donahoe  
Jaime R. Donaldson  
Laura & John Doogan  
Holly Dorman Morrell & Jonathan Morrell  
Lisa K. Dorsing  
Rosalie A. & Henry Doty  
Dana Doty Sewall & Marc Doty  
Betty L. & Rev. Galen Doughy  
Rebecca M. Douglass & David P. Dempsey  
Donna S. Douglass  
Annemarie E. & Gregory W. Downey  
Robert W. Downing  
Lyndsey M. Downs  
Carlita Dreblow  
Susan & Richard Drenckpohl  
Peggy E. Drew  
Denny K. Driskill  
Lois I. & Steve Droegemeier  
Ellen W. & Richard Drummond  
Adele G. & Fred Drummond  
Robert H. Dudley  
Richard T. & Kathy Duff  
Dale A. & Kathleen R. Dufresne  
James A. & Wanda L. Dugan  
Paula C. Dunbar  
Lloyd A. & Alice J. Dunlap  
Melissa R. Dunn  
Christine & Donald R. Dunn

Mary G. & James F. Dunn  
Dr. Mark A. & Agnes Duntley  
Rachel & Matthew DuPont  
Dennis C. Dupree  
Robert L. & Patricia E. Dupree  
Kendall & Linda Dupuis  
Isabel L. d'Urbal  
Marilyn L. & Talbert H. Duren, Jr.  
Lodema A. & William H. Durham  
Joanne M. & Richard Durkee  
Caryn M. & Dirk P. Duryee  
Guy R. Duryee  
Robert & Debra Dutton  
Melinda Z. & David Dutton  
Dr. Robert F. Duvall  
Steve P. & Debra Duvoisin  
Joan S. & Richard L. Dye  
June Eagle  
Dennis J. & Gayle M. Earling  
Michael & Holli Eaton  
Harriet E. Eaton  
Walter & Linda Ebel  
Phillip R. & Michiko N. Eberle  
Nancy A. Ebright  
Karen & Bernie Eckel  
Glenn & Janean Edgemon  
Michael J. Ediger  
John & Linda Edmondson, Sr.  
Nancy & Robert Edmonson  
Jeffrey & Susan Edwards  
Dr. James R. & Jane M. Edwards  
Kari B. & Terry L. Edwards  
David P. & Geri Eekhoff  
Mary K. Eells  
Virginia W. & Elmer Egli  
Kathleen Eickstadt  
Sharon D. Eide

Cheryl D. & Stephen E. Eide  
Mark H. Eidson  
Marc W. & Sophie Eilers  
Adolph C. & Eva M. Ekvall  
Steven M. Eldridge  
Dorothy & William M. Elkins  
Bruce & Kathleen Ellingsen  
James C. & Tekla B. Ellingsen  
Kimberly T. Elliot  
Dorothy I. & Ronald Durkee  
Katie L. & Josh Ellis  
Brooke J. Ellis  
George Ellis  
Catherine A. & Donald Ellis  
Mark S. Ellis  
Andrew & Carol Elsen  
David G. & Dena L. Elzie  
Ketra L. Embleton  
J. Bruce & Teri J. Embrey  
Marjorie L. Embrey  
Sharon E. England & Bernard Super  
Camilla & Robert English  
Rev. Milton & Shirley Ensley, Jr.  
David & Lee Anne Entel  
Jacqueline C. & John Eppling  
Rudolph J. & Merilee Erchinger  
Carol Ann Erickson  
Gary & Vicki Erickson  
Bonee B. & Joe Erickson  
Lawrence V. Erickson  
Anna Erickson-Wise & Bob Wise  
Cathleen C. & Bruce Eskew  
Doug McLauchlan & Susan Estinson  
Chad & Krichelle Esvelt  
E. L. & Inger Furseth Everett  
Erica L. Ewart  
Kim M. Ewing

Nancy & Thomas E. Eyer  
Nancy R. & Donald Fairburn  
Rev. Benjamin & Jaye Fairchild  
Sharon A. & Peter Fairchild  
William E. & Ruth Faires  
Juliana T. Falkenstein  
Jean & Doug Fandl-Kelly  
William & Annette Fanslow  
Scott S. & Mary L. Farrington  
Kirk D. & Maj. William Farris  
Margie V. Farwell  
William S. & Barbara R. Faught  
Kathleen L. & A. Stefan Fechter  
Kurt D. Felgenhauer  
G. S. & Joan Fergin  
Sherrie L. & Stanley Ferguson  
Rinda & Frank Fernandes  
Joel & Sara White Ferris, Jr.  
Cherie A. & Maurice O. Feryn  
Catherine M. & R. Ed Field  
Corrine E. & Gordon Field  
Melanie J. & Timothy L. Figart  
Bruce P. & Coralie Figueira  
Mary M. & Ken Finch  
Cathy & Randall Fink  
Bruce D. & Helen A. Finlayson  
Dennis M. & Margaret M. Finn  
Emily L. & Jeffrey J. Fiorito  
Eileen M. & Jimmy G. Fisher  
Darin L. & Jill C. Fister  
Karin C. & David Fite  
Charlene H. & Kevin Fitzgerald  
Kelli C. Fitzsimmons  
Sharon J. & Vince Flanigan  
Jean Flechel  
Dianne Fleisher  
Louise Fleming

Daniel B. & Anna M. Fleming  
James Fletcher  
Clayton L. & Jewel A. Floch  
Melissa A. & Daniel Flores  
Jack T. Flynn  
Nancy C. & Gregory Flynn  
Cheryl A. & Thomas Forbes  
Cordelia M. & Steve Ford  
Joan & Victor Forni  
Kirk D. Forsyth  
Hubert D. Forsyth  
Rev. Karen & Ron Fortlander  
Terry Foster  
Helen M. Foster  
Suzanne & Terry Foust  
Marcy A. & Mark M. Fox  
JoAnn E. & Dennis L. Fox  
Mary F. Fox  
Jerald & Janet Fox  
Richard & Gloria Fraley  
Trudy A. Francis  
Jeff & Rae Jean Frank  
Anne Franke & Michael West  
Anne B. & Clark E. Franklin  
Mary R. & Al J. Franklin  
Lucille Franks  
Scott C. & Wendy Franz  
Dennis L. & Kathryn A. Franz  
Lynn E. Franz  
Rev. Brainerd & Esther Fraser  
Darlene & Earl Frates  
Lynne G. Frease-McMahan & Kevin McMahan  
Diana Fredlund  
Patti A. & Thomas E. Freeman  
Chris E. & Dr. Richard K. Freeman  
Matthew J. & Becky L. Freeman



Carla DePriest

Carla DePriest, '04, likes to make a plan and see it through. After graduation, her immediate course was set: She would attend Baylor University Law School in the fall on a full-tuition scholarship. But her plans changed when she learned she had been awarded a Fulbright grant to conduct research in El Salvador for the 2004-05 academic year.

DePriest deferred attending law school in Texas and traveled to El Salvador, where she is conducting a comparative analysis of the role of women in providing legal and social services to children in Latin America and the United States.

Melissa D. & Timothy R. Frey  
Mitch & Ilana Frey  
Kiersten P. Friess  
Rev. Elmer R. & Lenore Frimoth  
Dr. Richard & Jennifer Frost  
E. William & Suzie L. Frost  
Earl & Linda K. Fujitani  
Robert & Carolyn S. Fuller  
Joann M. Fuller  
Rebecca E. Fulton  
Judy & Lee Fundenberger  
Elizabeth & Hugh Funk  
John O. & Donna Furuness  
C.W. & Sonia D. Gaddis  
Shaunda K. Gaffney  
Sherri L. Gage  
Judith L. Gage  
Jean V. Gahagen, M.D.  
Linda J. & Robert Gaines  
Angela & Ron Galbreath  
Claudia L. & Larry Gallagher  
Sandra K. Gallagher  
April M. Gallagher  
Mark E. Gallegos  
David & Julie Galles  
Christy J. Gallotte & Dennis Chivers  
Donald J. & Tami D. Gallotte  
Rev. William & Dorothy C. Galloway  
Rev. Norm D. & Fay Gano  
Glenn & Mara A. Gano  
Robin L. & Guillermo Garcia  
Joanne M. & Louis D. Garinger  
Richard & Cecilia Garner  
Lisa A. & Dale Garrett  
Frona & Jim Garvison  
David & Carol Gavareski  
Judy M. Gaza

Richard & Connie Geroy  
Cass Gebbers  
Pamela J. Geddes-Girtman & Brian Girtman  
Scott D. Gee  
Ida H. & John A. Geiger  
Jeri M. Gentry  
Kevin W. & Libby S. Germer  
Shailesh Ghimire  
Joseph & Sue Giacomini  
Diana & Chris Giannoulas  
Ralph & Barbara Gibson  
John E. & Laurie A. Gibson  
Todd M. & Lisa J. Gilbert  
Rev. William A. & Jeannette Gildehaus  
Don A. & Faye Gilkison  
George L. & Marilyn M. Gillam  
Gary & Ronnie Gillespir  
James E. & Diane Gilman  
Gene J. Gilmore  
Kathryn J. Ginn  
William R. & Laura M. Ginn  
George & Lila Girvin  
Fred R. & Shirley J. Glandon  
Allen & Gail Glasenapp  
James C. & Lena L. Glennon  
Ward T. Glynn  
Keri L. & Anthony R. Gnecco  
Marva W. Goede  
P. Lorraine Goetz  
Gordon Michael Goins  
Julie A. & Ramon Gonzalez, Jr.  
Ronald L. & Lori A. Goodale  
Robert W. & Carol Goodale  
Rebecca & Bruce Goodell  
Sally K. & Bruce W. Goodlake  
Janet R. Goodwin



Donald J. & Vicki L. Gorder  
 Michael H. & Claudia L. Gordon  
 Mark & Carole Gordon  
 Georgia W. & J. Harold Gordon  
 Carol & David B. Gordon  
 Howard Gordon  
 Douglas & Jean Gore  
 Tom Gorman  
 Todd A. Goselin  
 Rudy J. Gothenquist  
 Ruth & Rudy Gothenquist  
 David J. & Linda Gould  
 Jeanette & Dennis Gould  
 James H. & Darlene F. Grady  
 Lloydine R. & Robert V. Graham  
 Rev. Rolfe J. & Beverly R. Granath  
 Gordon Grant  
 James S. & Jennifer L. Grant  
 Glen E. & Marlene Graves  
 Betty & Gordon Graves  
 Charles Graves  
 Jordan M. Gravette  
 Gail J. & Richard L. Gray  
 Rev. Weston D. & Jeanne Gray  
 Roy Green  
 Marci & Lonnie Green  
 Hillegarde E. Greenaway  
 Dru-Ann Greene  
 Judy L. & Steve Greenough  
 Mae Louise & Ray E. Greenwood  
 Carla C. & Bjorn Gregersen  
 Laree Gregory  
 Hilary J. Grey  
 James W. & Kathleen M. Grey  
 Marilyn M. Grey  
 Marie I. & Dr. Thomas G. Griffith  
 Robert M. & Dolores A. Griffith

Kenneth Grisson & Carolyn Fay  
 Bruce K. Grogan  
 Sheila M. & Thomas Groh  
 Frank W. & Noreen Groh  
 Mary J. & John Gross  
 Erlene & Spike Grosvenor  
 Rev. Robert I. & Paige Grove  
 Tara L. & Randy Groves  
 Theresa I. Groves  
 Debra & Robert Gruber  
 Bonnie & Douglas Grumbach  
 Duane & Trudy Grummons  
 Richard L. & Dawn Guenther  
 Mark E. Gunning  
 Sara Silva Gunnyon  
 Floyd L. & Velma A. Gurnsey  
 Julie B. Gustafson  
 Rosemary F. & Ragnar Gustafson  
 Kenneth A. & Libby Guthrie  
 Richard C. & Barbara Guthrie  
 Robert J. Haase  
 Kelly A. Habecker  
 John M. & Polly Haberlin  
 Lee A. & Nancy J. Hackbarth  
 Katelyn B. Hackett  
 Denis & Kris Hackwith  
 Shirley J. Haegele  
 Rev. Keith A. & Jeanne T. Haemmelmann  
 Leo & Sandra Haemmelmann  
 Edward Haessler  
 Allen R. Haffner  
 Larry M. & Barbara J. Hagen  
 Edward & Patricia Hagestad  
 Miriam B. & Carl Haglund  
 Kim A. Hagman  
 Susan C. & David Hagman  
 Paul W. Hagood & Marjorie Woollacott

Bruce & Catherine E. Hagstrom  
 Peter F. & Melanie J. Hagstrom  
 Jennifer L. Hahn  
 Marjorie G. Hahn  
 Jim A. Haines  
 Linda Haladyna  
 Gregory J. & Gwendolyn D. Haley  
 Bernard & Linda Haley  
 Cindy A. Hallsten  
 Dave & Jan Halsey  
 Martha & Robert Halvorsen  
 Dawn Louise Halvorson  
 Clarence Hamilton  
 Christine & Thomas Hamilton  
 Ruth M. Hamilton  
 Barbara J. & James P. Hamlin  
 William E. Hamm  
 Margaret Hammack  
 Dale W. & Kari L. Hammond  
 Dr. Robert S. & Carolyn M. Hampel  
 Erica L. Hampton  
 Casey P. & Ronald S. Handrop  
 Mary Ellen & Ed M. Hanks  
 Marilyn R. & Marty Hann  
 Robert Hannaman  
 Kris & Gordy Hannigan-Luther  
 Linda & Mitch Hansen  
 Margaret M. Hansen  
 Kathleen M. & Richard J. Hansen  
 Mary Ann Hansen & Rudy Larsen  
 Kathleen G. & Jason Hanson  
 Gloria M. Sandford Hanson & Joel Hanson  
 Dorothy A. & \*Chad Hanson  
 Rev. Gene & Ellen M. Harbaugh  
 Louise G. Harbin  
 Nancy E. & Alan Harding



Harold W. & Roberta M. Harding  
 Peggy J. Hardt  
 Virginia F. Harger  
 Kenneth & \*Erma L. Harker  
 Amy K. & Paul D. Harker-Murray  
 Lavonne F. & Melvin M. Harless  
 Dennis W. & Donna L. Harmon  
 Robert A. & Barbara Harmon  
 Marvel J. Harper  
 Larry & Janet Harrington  
 Jason C. & Myra E. Harris  
 Rev. Charles G. & Irene T. Harris  
 Barbara J. & Laverne Harris  
 Martha J. Harris & Morgan Lyons  
 Robert & Sharlene Harrison  
 Andrea J. Lekszen Harrison & Nathan Harrison  
 Rev. Edgar P. & Mary K. Hart  
 Edna V. & Harold Hart  
 Virginia Hartley  
 David W. & Shannon A. Harton

Rachelle T. & Kurt Hartvigsen  
 Gail A. & Warren H. Haruki  
 Vernon L. Harvey  
 Ross Y. Hashimoto  
 David M. Haslet  
 Annemarie M. & Zille Hasnain  
 Kim J. & Kristi A. Hatch  
 Nicole C. Hatchel  
 John P. & Kathleen Hatcher  
 Lyle D. Hatfield  
 Mickey F. & Annette Hatley  
 Shirley E. & Phillip Hauck  
 Nancy Haugan & Fred Sturdevant  
 Dr. Timothy J. & Hwa J. Haugan  
 Erin M. Hauge  
 Robert B. Hauge  
 Barbara A. Haun  
 Dwayne Haun  
 Pat M. & Tim J. Hausler  
 Claire I. & Harry L. Havens  
 Laurel L. Havens  
 Weldon L. & Mary Havercroft  
 Heather & Ryan Hawk  
 Gregory S. & Lynne E. Hayashi  
 Shirley J. Hayden  
 Larry D. & Dorothy H. Hayden  
 Estel & Sally Hayes  
 John & Mary Hays  
 Chadron B. & Staci Hazelbaker  
 Aaron Head  
 John R. & Barb J. Heddle  
 Phillip W. & Janet Hegg  
 Susan & Les Hegney  
 Eric J. Heidenreich  
 Brett D. & Karen Heikens  
 Carolyn G. Heilman  
 Jon & Karen Heimbigner

La Mar & Marguerite Heimbigner  
 Donald Heimerman  
 Dolores M. & Ralph Hein  
 Mary K. Heindl  
 Erin K. & Joe B. Helbling  
 Allen E. & Patricia F. Hellner  
 Heidi A. Hellner & Leo Gomez  
 Kurt J. & Chrystal E. Helmcke  
 Rebekah & Mike Henckel  
 Jeannine Henderson  
 Chester & Irma Henderson  
 Patricia G. & Paul Hendricks  
 Sean R. & Kelly D. Henrickson  
 Rebecca E. Hendrickson  
 David E. & Sharon E. Hendrick  
 Edward & Karen Henning  
 Wanda L. Henry  
 John D. & Bernadine R. Henry  
 Jeanne Hensler  
 Teresa L. Henson  
 Timothy M. & Janette Henson  
 Patricia & Wallace Herder  
 H. Russell & Janet Heritage  
 Loris D. & Richard B. Herman  
 Pauline E. & Fred Herrlinger  
 David M. & Colleen S. Herron  
 J. Michael Hershberger  
 Barbara H. & Keith Herzog  
 Stephanie G. R. & Rick Herzog  
 Frances P. Heu  
 Ronald D. & Pam Heuett  
 Edward V. Hollingsworth  
 Elizabeth H. & Joseph M. Hewa  
 Joseph & Laura Hewett  
 Glenn A. & Reta Hicketier  
 Charles & Margaret Hickman  
 Sara J. Hiemstra

Stacie L. & Randy Hiatt  
 Patrick Hildman  
 Aaron W. & Jennifer Hill  
 Robert W. & Kathleen B. Hill  
 Yvette R. & Bud Hill  
 Sue & Rev. Wilton Hille  
 Al & Julie Hillis  
 Dr. Bill W. & Betty Hillman  
 Lee & Sharon R. Hillwig  
 Jill & K.S. Hilmes  
 Lesley L. Hilts  
 Joette C. Hilzer  
 Shena M. & Daniel E. Hinds  
 R. Allen & Jennifer K. Hinkle  
 Anne P. & Delwin R. Hinkle  
 Robert J. & Sandra K. Hiorns  
 Nancy M. Hironaka  
 Alice Hiser  
 Bradley J. & Chandos Hoaglund  
 Ruby L. Hobson  
 Harold Hochstatter  
 Susan Hodges  
 Hilary D. Hoffman  
 Daniel J. Hoffman II  
 Janine Hoffman  
 David & Kathy Hofheins  
 Becky Hofstad  
 Todd D. & Monica Holdridge  
 Roberta Duran Holiday  
 Susan M. Holland  
 Birdie N. & Dick Holling  
 Edward V. Hollingsworth  
 Edna & Stanley Hollingsworth  
 Amy E. Holloway  
 Erik A. & Karleen S. Holm  
 Mary Lynn & Roger P. Holman  
 Florence M. & Rev. Glen Holman

Teresa J. Holmes  
 Nancy Holmes  
 Debbie A. & Kurt A. Holmes  
 Kenneth Holmes  
 Elizabeth A. & George Holmes  
 Cheryl L. Holmes  
 Bonnie Sue Holmes  
 Donald C. & Ruth A. Holsinger  
 Paul D. & Janet I. Holsinger  
 Diane K. & Richard Holt  
 Henry L. & Ruth A. Holter  
 LeRoy E. & Shirley F. Hook  
 Mary L. & Kenn Hoover  
 Charlotte W. Hopkins  
 Dr. Christine Ott Hopkins  
 Andrew & Donna Hopoi  
 Erica D. Horn  
 Sally L. Horn  
 Eleanor Hornall  
 Laura Hornberger  
 Merrily M. & William B. Hornell  
 Susan L. & Ed Horton  
 Robert & Pamela Hosking  
 Debora & Ken House  
 Pauline E. & Donald Housenga  
 Mark E. Houser, Jr.  
 Helen E. & Dr. Frank Houser, Jr.  
 JoAnn & Clifford Houston  
 Molly & Thomas Howard  
 Ben K. & Bonnie L. Howard  
 Nancy L. Howard  
 Robert & Patricia Howell  
 Rev. James H. & Sally Howell  
 Sandra L. & Stephen R. Howland  
 Marilyn C. Hoyt & Dan Wharton  
 Helen A. & Joe Hrdlicka  
 L. Marlee & Clark Huber

Carl J. & Judith A. Hudson  
 Daniel G. & Nancy D. Huffman  
 Joshua D. Hug  
 Virginia M. & Bernal Hug, Jr.  
 Perry L. & Emily R. Hughes  
 Margaret & Dr. Robert Hughes  
 Joyce L. & Ted Hughett  
 Alfred & Claudia Hulbert  
 Carla & Larry Hull  
 Dan F. & Jean Hultgren  
 Mandolyn L.W. & Taud A. Hume  
 Carol A. & Darrell Humphrey  
 Drs. Linda L. & James B. Hunt  
 Clara E. Hunt  
 Elizabeth S. & Eugene Hunter  
 Robert E. & Sheryl A. Hurbi  
 Keith J. Husby  
 James J. & Susan R. Huss  
 Daniel H. & Cathy Hussey  
 Dr. Lester & Margaret Hussey  
 James P. & Sally Husted  
 Mark & Kathleen Hutchinson  
 Kae R. & Phillip Hutchison  
 Darrol K. Hval  
 Mary C. & Fred W. Hyatt  
 Ronald & Benita Hyder  
 C.M. & Nancy A. Icenogle  
 Laurie A. & Courtney Ide  
 Mark & Marianne Iksic  
 G. Robert & Joan H. Inkpen  
 Gwen L. & John Innes  
 Claude & William Irion  
 Robert & Janet Irish  
 Karen A. & John Irwin  
 Frances D. & James Irwin  
 Doris & Jerald Isaac  
 Darryl & Carol Isotalo

Nicholas T. & Jennifer L. Isotalo  
 Rev. Eric & Libby Iversen  
 Dixie R. & Daniel Iverson  
 Mark J. Jackson  
 Tomi G. Jacobs & Gary Dorman  
 Ann H. Jacobson  
 Roy M. & Carrie L. Jacobson  
 Mary Jo Jahns  
 Doug James  
 Gail L. & Donald Janes  
 Alice Jann  
 Gary M. & Kay Jantz  
 Dr. David A. & Lynn Jarvis  
 Lon A. & Becky A. Jasper  
 Margaret A. & Glenn Jay  
 Helen S. & Paul W. Jedele  
 Michael & Susan Jeffers  
 Brandon & Janelle Jelinek  
 Reece G. Jenkin  
 John G. & Divina Jenkins  
 Kelly Gehrmann Jennings & Bruce Jennings  
 R. Lee & Rebecca L. Jennings  
 Linda & Donald Jennings  
 Laura C. & Seth E. Jensen  
 Andrea & Carl Jensvold  
 Brenda M. & Dr. Joseph Jeter  
 Kim D. Jewell, M.D.  
 Janice E. Yoder & Gary L. Jewell  
 David B. & Kim L. Jewett  
 Andrea H. Joachim  
 Ellen & William Johansen  
 Jerry & Lori L. Johnson  
 Jeremiah & Jessie Quintero Johnson  
 Janet E. Johnson  
 Dennis R. & Wilma L. Johnson  
 Albert D. & Janet C. Johnson



## Delia Orosco

When Delia Orosco's high-school counselor told her about the Washington State Achievers Program, her dream of being the first in her family to attend college was on its way to becoming a reality. Orosco, '07, won the scholarship and is now in her sophomore year at Whitworth, an opportunity she wouldn't have had without the financial help offered by the Bill and Melinda Gates Foundation.

The Gates Foundation, in collaboration with the Washington Education Foundation, established the \$100-million Washington State Achievers Program in 2001 to help low-income students in Washington state gain access to higher education. In 2003, 16 of the 104 Gates Scholars enrolling at institutions in Washington chose Whitworth. They followed five Gates Scholars who enrolled at Whitworth in 2001 and four in 2002.

Donna J. & Dr. Theodore Johnson  
 Barbara & Dr. Paul C. Johnson  
 Rev. Walter & Esther Johnson  
 Peggy & Dr. Rick Johnson  
 Eleonore M. Johnson  
 Daniel A. & Camilla Johnson  
 James B. & Kay Johnson  
 David J. & Vicki L. Johnson  
 David A. & Sue Johnson  
 Daniel S. & Catherine Johnson  
 Colleen A. & Larry Johnson  
 J. Mark Johnson  
 Marian L. & William L. Johnson  
 W. Bradley & Laura A. Johnson  
 Lynne A. & Robert Johnson  
 Dr. Ivan M. & Janice Johnson  
 Linda D. & Ray Johnson  
 Judy L. & Bradley H. Johnson  
 Herbert E. Johnson III & Charlotte S. Johnson  
 Rev. Phyllis M. Johnson  
 Della W. & \*Robert S. Johnson  
 Martha I. & Ray C. Johnston  
 Stacey Johnston  
 Jill S. & Bradley Johnston  
 Lisa A. Johnstone  
 Rev. Glenn W. & Carla Jolley  
 Kelli & David Jones  
 Jace W. Jones  
 Roger Jones  
 Wayne & Amal Jones  
 D. Michael & Linda R. Jones  
 Madeline E. Jones  
 R. Rick & Christie A. Jones  
 Thelma Jones  
 JoEllen & Richard L. Jones  
 Richard N. & Anne Jones

Annabelle R. & Robert O. Jones  
 Clavard E. Jones  
 Dale A. Jones  
 Dennis A. & Sharon Jones  
 Roger J. & Laurie D. Jones  
 Scott & Katherine A. Jones  
 Carol L. Jones  
 Karen Jones  
 Barry K. & Carole J. Jones  
 Andrew & Mary Judd  
 Susan H. & Richard Judkins  
 Malia Kaai  
 Donna Kaemingk  
 Keith & Wendy Kagawa  
 Erika R. & Corey Kahler  
 Tiffany Ann & Kevin Kalal  
 Kenneth C. & Louise Kallenberger  
 Diana Kallis  
 Richard D. & Lori M. Kamerer  
 Richard & Connie Kamm  
 Pamela J. & Sammy L. Kantner  
 Bernita K. & Loren J. Kantner  
 Kenneth & Virginia Karber  
 Erik W. & Rachel S. Karns  
 Phillip L. & Linda Kastens  
 Brent M. & Jen Kaufman  
 Kelli M. Kaufman  
 Kandi G. & William Kaufman  
 Karen S. & Preston Kauk  
 Sean C. Kawakami  
 Alan C. & Pat Kay  
 Charles & Kathleen Kear  
 Dr. Daniel C. & Melinda M. Keberle  
 Tek K. & Constance L. Kee  
 Carolyn & Frederick Keefe  
 Michele & Luther Keeler  
 Rev. R. Hunter & Barbara D. Keen

Lynne & James Keenan  
 Martha L. & James Keene  
 James A. & Wilma J. Keener  
 Eulale Y. & Ray Keesler  
 Edwin L. & Jean B. Keil  
 Helen M. & Arthur Keiser  
 Rev. Curt & Rebecca Kekuna  
 Carol R. Kelbell  
 Christine Keller  
 Judy J. & Robert Keller  
 Mary A. & Donald M. Kelly  
 Rev. Jerry L. & \*Sharon E. Kelly  
 Joyce F. Kelly  
 Emily E. & Marty Kelly-Peterson  
 Heidi & Chris Kemp  
 Teresa Kendall  
 Mary E. Kenna  
 Jennifer L. & Ryan R. Kennedy  
 Pauline & George Keno  
 Betsy Keno  
 Lola M. & Jerry D. Kent  
 Jack R. & Betty B. Kerby  
 Philip J. & Joan E. Kercher  
 Margaret O. Kernkamp  
 Evelyn A. Kerr  
 Brenda Kerr & Dennis Minno  
 Theodore W. & Diane M. Ketcham  
 Charles W. & Linda Keturakat  
 Daniel L. Kezele  
 Sharron M. Kick  
 Drs. Lois M. Kieffaber & Alan W. Peterson  
 Anne Kiemle & Kael Sherrard  
 Nancy J. & Thomas Kikes, Jr.  
 Toni L. & Brian Killefer  
 Beverly A. & Bill Killion  
 Constance S. Kim  
 Ted M. Kimball

Cora & Lyman V. Kinard  
 Katherine & Donald King  
 Karolyn J. & Ronald Kinley  
 Becky Kinslow  
 Mary Beth & Ron Kirk  
 Rev. Rollin D. & Susan Kirk  
 David & Janet Kirkman  
 Hugh & Mildred S. Kirkpatrick  
 Miriam E. & Kenneth Kishi  
 Randy Kissell  
 Tom & Heidi Kitayama  
 Virginia T. & Walter Klaus  
 Rev. Claude E. & Joanne Klaver  
 Catherine Klein  
 Nancy & Noel Klein  
 Carol & Gerald W. Klein  
 Rev. Richard W. & Ardith Klein  
 Susan P. & Daniel Klein  
 John E. & Marliss M. Kleinbach  
 Karrie & Paul Klingeman  
 Victoria R. Klump  
 Stephen & Judith Klump  
 Zane A. & Stacey Weber Klym  
 Dr. Norman & Brita Knapp  
 James D. Knisely  
 Betty J. Knobel  
 Nicholas J. Knoll  
 Duane & Roxann Knoll  
 Valerie P. & Ronald L. Knott  
 Keith & Kimberly Ruthardt Knowles  
 Robert N. & Kathy S. Knowles  
 William G. Knuckles  
 David L. Knudson  
 Annelia & Duwayne Knutson  
 Stephanie A. & Jeff Knutzen  
 Connie & Robert Koch  
 Rhonda J. Koele

Alvin B. & Cherita Koetje  
 Dwayne & Marilyn Kohler  
 Steve R. & Marilyn Kohler  
 Jim E. Kohlstedt  
 John & Becky Kolberg  
 Scott M. & Julie L. Kolbo  
 Mildred E. Koper  
 Janice & Jeff B. Kopet  
 Karen Koroknay  
 Donna L. & John Korthuis  
 Cloann & Albert C. Kovats  
 Barbara J. & Edward Krabacher  
 Dr. Dale & Susan Krageschmidt  
 Joe & Rebecca E. Kramarz  
 Stacy L. & Wade Hammond  
 Marlene & Myron Kramer  
 Rev. Nick J. & Jeanette Krantz  
 Daniel A. Krause  
 Robert B. & Becki A. Krause  
 Jerry & Sharon Krause  
 Kurt C. Krauth  
 Kermit N. Krauth  
 James K. & Sandy Kravik  
 Rachel Krebs  
 Sherry L. & Kenneth M. Krebs  
 Diana M. & John Krebs  
 Ruth A. Krentel  
 Rachel & Larry Kristianson  
 Dr. Robert S. & Muwon Kroeger  
 Dr. Catherine C. & Richard Kroeger  
 Joan M. & Paul Kross  
 Susan L. & Paul L. Krug  
 Amber R. Krumbholz  
 Diana & Brian R. Kruse  
 Joyce I. & Wallace M. Kubota  
 Cheryl A. & Gary L. Kuhlmann  
 Donna & Raymond R. Kuhn, Jr.

Linda L. & Christ R. Kuntz  
 Steven R. Kuntz  
 Borree Kwok & Siu-Ki Wong  
 Gary O. & Carol D. Kyle  
 Jodi & David LaBrie  
 Keith LaMotte  
 Sally J. LaRose  
 Margie N. & Mike LaShaw  
 Bradley E. & Carol D. Lavine  
 Kara K. & Dale R. Lavoie  
 Mary L. & Kent Lambeau  
 Deonne & John D. Lamb  
 June R. & Shawn P. Lamberd  
 Edward & Linda Lamens  
 Dr. Michael & Yvonne Landt  
 Martha A. Lane  
 Jeanette & Nicolas Langston  
 D. Lois & Starr Lanphere  
 Armand A. & Socorro V. Lara  
 Melinda J. Larson  
 Christine & Douglas Larson  
 J. Russell & Joan H. Larson  
 Andrew & Frances Lau  
 Stanley & Anne Lauderbaugh  
 Dr. William N. Laval  
 Richard L. & Gloria Lavalle  
 Debra Lavis  
 Ingrid & Mark T. Lavoie  
 Lisa L. & Shane Lawrence  
 C. Jean & Kent Lawson  
 Julie & James Lays  
 Rebecca S. & Robb D. Le Roy  
 Dr. Michael K. Le Roy  
 Grace Leaf  
 Kathy D. & Raymond Leaver  
 Jeffrey S. & Susan F. Leavitt  
 Frank & Janet Rieg Lecocq

Martha J. & Steven Lederer  
 Ruth Ann & Norm Leduc  
 Craig & Sherry Lee  
 Donalee Lee  
 Ann B. Lee  
 John B. & Joan A. Lee  
 Paul A. & Laurel Lee  
 Jerry A. Leech  
 David F. & Karen Leestma  
 James & Eloise Legg  
 Gary E. & Nancy H. Lehnhart  
 Harry T. Leigh  
 Isla L. Leigh  
 John D. & Hilda F. Leigh  
 Dawn & Terry Leighton  
 Terry Leighton, Sr.  
 Tracie Leistikko  
 Elena M. & Wayne E. Leman  
 Dorothy M. & Fred Lemcke  
 Ronald L. & Jean Lentes  
 Lynn M. & Rodney T. Lentz  
 Jerry D. & Sharon F. Lenz  
 Ryan K. Leonard  
 Bethany & Matthew Leonard  
 Barbara J. & James O. Lepard  
 Leroy A. Levesque &  
 Grace Orchard-Levesque  
 William P. & Eva Lew  
 Karen & Randy Lewandowski  
 Steven E. & Penelope S. Lewis  
 Lawrence & Irene Lewis  
 Mark & Susan Lewis  
 Andrew W. Lewis  
 Robert & Allison Lewis  
 Richard E. & Sherry Lewis  
 Nancy T. & Warren C. Lewis  
 George J. Lewis, Jr.

Rev. Mark & Shannon L. Lichty  
 Donovan J. Lierman  
 Donn & Kim D. Lierman  
 Bruce & Patricia Lierman  
 Patricia A. & Robert C. Light  
 Lynne D. & Carl G. Lind  
 Mary A. & John Lindeblad  
 Kenneth R. & Karen Lindgren  
 Jean W. Lindsay  
 Janet C. Lindsey  
 Pamela J. & Victor Lindsley  
 Rev. Ben & Mary Jo Lindstrom  
 Sharon I. Link  
 Virginia L. Lintott  
 Marilyn R. & Paul W. Lisowski  
 Ralph V. & Janet L. Litchfield  
 Betty F. Littell  
 Peter D. & Krista M. Little  
 Jerry J. & Mary Ann Littlemore  
 Andrea M. Lloyd  
 Margaret & Mark LoMurray  
 Marlene R. Lock  
 Kandy & Steven Lockard  
 Joy L. & Matthew K. Lockard  
 Barbara J. & James O. Locke  
 Jeanne Lodge  
 Rev. Edmund & Joyce Loew  
 Gordon E. Lofgren  
 Douglas S. & Esther Longly  
 Mark & Leigh Looyenga  
 David W. Lord  
 Diane K. Lorian  
 Barbara M. Loste, Ph.D.  
 Florence Giles & L.W. Loughheed  
 Rita Lounsbury  
 Karin Olsen Lounsbury  
 Rebecca L. Lounsbury

John E. & Susan A. Love  
 Joelle K. & Andrew Loveless  
 Kathryn E. Lowe  
 Emily J. Lower  
 Lynda M. & Rick Lowry  
 Julia E. Lucas  
 Carol Lucas  
 Betty R. & Scott B. Lukins  
 Rev. David B. & Mary Lukov  
 Calvin Lum  
 Kenneth Lundeberg, M.D.  
 Luverne A. Lundeberg  
 Roberta & Steven Lundeberg  
 Christina & Duane Lundeberg  
 Robert J. Lundy  
 Donna M. & Leroy J. Lundy  
 Bradley E. & Judy A. Lunt  
 William & Mary Lupton  
 Colleen & Rev. David Lura  
 Edwin G. & Christine Luse  
 Nancy M. & Walter C. Lusk  
 Jeannette J. & Al Lutz  
 Cindy J. & James Lutz  
 Mrs. Robert A. Lutz  
 Juanita Lyle  
 Linda J. & Thomas Lyle  
 Patricia A. & James Lynass  
 John E. Lynch, Jr.  
 Peter J. Lynch  
 Rev. Theodore D. Lyons II &  
 Dione R. Lyons  
 Nancy L. & Glenn MacCorcle  
 Virginia H. MacDonald  
 Kristine A. MacDonald  
 Bruce G. & Barbara A. MacIntyre  
 Rev. Janet MacGregor-Williams &  
 Christopher J. Williams



Julie D. & Dr. Kevin L. MacKey  
 Virginia H. & Donald Macnab  
 Nathan R. Maddox  
 James H. Magee  
 Betty J. & Russell Magnuson  
 Mark & Sheri Mahaffey  
 Eleanor & Jack G. Mahaffey  
 Claude J. Makin  
 Patricia K. Malmsten  
 Dr. David G. & Susan Maloney  
 Mary C. & Richard Maltby  
 Edith & Donald Manildi  
 Pat & Ruth Manners  
 Karin C. & Dan Manning  
 Dr. Michael R. Manning &  
 Nancy Oretskin  
 Caitlin R. & David O. Manz  
 Lynda M. Maraby  
 Carol A. Markson  
 Thomas J. & Beverly Markson  
 Susan A. Mars  
 Brenda & Charles Marshall  
 Barbara M. & John C. Marshall  
 Audrey M. & Thomas R. Marshall  
 Rev. Frank & Alicia Marshall  
 Nancy J. & Charles Marshall  
 David P. Marshall  
 Kirk M. & Cheryl Marston  
 Robert J. Martin  
 Hilary V. Martin

George & Marilee Martin  
 Barbara A. & David C. Martin  
 Marie & Albert Martin  
 Carolyn I. Martin  
 Michael S. & Roberta A. Martin  
 Sandy K. & Larry Martin  
 Deborah R. Martin Pike & George Pike  
 Paula J. Martinson  
 Beverly A. & E. James Mason  
 Martha A. & Max R. Massey  
 Rev. H. Scott Matheney  
 Dwight R. & Jennifer Matheny  
 Dr. Richard E. & Phyllis Matheny  
 Paula C. Mathias-Fryer & Stuart Fryer  
 Sachi Matsushita  
 Dr. Clyde B. & Annie Matters  
 Rev. Steven & Beth Matthies  
 Marilyn & Theodore Mattie  
 Laurie A. & Bill Mattinson  
 Ronald & Helen Matyas  
 John C. & Linda Maxwell  
 David & Deborah May  
 Raymond E. & Sandra Mayes  
 Tim A. McBride  
 Harold C. McBride  
 Teresa & Thomas McCabe  
 Dr. Floyd & Kathy McCaffree  
 Rev. Timothy C. & Ruth L. McCalmont  
 Marshall W. & Dianna McCalmont  
 Rev. Paul F. & Patricia McCann  
 Mary Ann & Robert L. McCarty  
 Marilyn M. McClellan  
 Rev. Douglas G. & Claudia McClure  
 Dennis & Nancy McCormick  
 Carroll C. & Betty McCormick  
 Betty Green McCown  
 Charles P. & Kristy L. McCoy

Mindi A. McCreless  
 Heather E. McCummins  
 Robert & Vanessa McDaniel  
 Jean E. & Clayton E. McDaniel  
 Courtney B. McDermed  
 Deborah M. & Peter McDonald  
 Jane E. & Ronald B. McDonald  
 William G. McDougall  
 Todd L. & Julie McDougall  
 Shawn L. & Angela McDougall  
 Janet L. McDowell  
 Kelly B. & Ann McEachran  
 Carole L. McEachran  
 John E. & Naomi E. McEwen  
 Gerald & Margaret McGarry  
 Michael & Bernadine McGinnis  
 Gary A. & Lynn McGlocklin  
 Judith K. & David McGowan  
 Tom M. & Mona Marie McGrady  
 Joan & Randall McGrady-Beach  
 Douglas F. & Elise C. McGuire  
 Kathy McGuire  
 Ginger L. McIlvanie  
 Kathy A. McIntosh  
 Faye & Charlie O'Neil  
 Kathleen McKay  
 Calvin J. & Debra L. McKee  
 David & Neta McKenzie  
 Alice McKeon  
 Daniel R. & Deborah McKinney  
 Brett & Jan McKnight  
 Loren & Kathleen McKnight  
 Connie R. McKnight & Patrick Foley  
 William & Mariellen McLeod  
 Diane K. & James N. McMullen  
 Cara M. & Joe P. McNair  
 Joanne L. & John W. McNair

James W. McNair  
 Kaye L. & K.C. McNally  
 Ernest C. & Nema O. McNaught  
 John & Carolyn Curley McNeil  
 William L. McNeil  
 Rev. Keith L. & Marie McNeil  
 Amy E. & Matthew T. McNelly  
 Archie & Patricia McPherson  
 Mark H. & Shelby McVay  
 Martin J. McWhinney  
 Marily J. & Timothy L. McWilliams  
 Carolyn J. & James Mears  
 Rev. Donald & Laverne Meekhof  
 Dr. Andrea Mehrlander  
 Amy J. & Andrew Meiners  
 Paulette B. & Peter Meldahl  
 Nan & Anthony F. Menke  
 Linda K. Merchant  
 Harold H. Merian  
 Gladys D. & Rev. Roger Meriwether  
 Luz I. Merkel  
 Edde & Barry Merrell  
 Fred K. & Jean Merrill  
 Alvida M. & James D. Merriman  
 Sheryl H. & Ed Merritt  
 Robert Meserve, Sr., & Mildred Meserve  
 M. Betty Messer  
 Erin B. Meyer  
 Mary E. Meyer  
 Mark D. & Andrea Meyer  
 Frank & Barbara Meyers  
 Brian D. Meyers  
 Donald O. & Shirley M. Meyers  
 Alan K. Michael  
 Junei M. Michelbook  
 Jeanette Mietzner Griffin & Paul Griffin  
 Sharon & Emil Mihelich

Margaret & Ronald Mikkelson  
 Alan C. Mikkelson  
 Rev. Gordon S. & Nancy Mikoski  
 Scott & Terri Mildenerger  
 Jim Mildenerger  
 Katherine P. Miles  
 Eroll L. & Dawn Miles  
 Joy D. & Robert K. Miller  
 Leslie D. & Ivan Miller  
 Ronald R. & Jill Miller  
 Richard D. & Mary M. Miller  
 Michael A. Miller  
 Jo A. & Marshall V. Miller  
 Donna M.O. Miller  
 Christy L. & Robert W. Miller  
 Daniel D. & Mary Jane Miller  
 Robert G. Miller  
 Ronna J. & Joseph Miller  
 Rev. Richard & Juleann Miller  
 Barbara Elliott Miller  
 Don A. & Jo Ann Miller  
 David P. Miller  
 Martin C. & Amy H. Miller  
 Kenneth A. & Karen Miller  
 Steven D. & JoEtta Miller  
 Scott A. & Heather Miller  
 Thomas N. & Connie Miller  
 Tim A. & Delia Miller  
 Lanita A. & Lin Miller, Jr.  
 Gerald & Linda Miller  
 Thomas & Susan Miller  
 James C. & Margaret M. Mills  
 Helen L. Mills  
 Minnielu H. Mills  
 Sandra L. Milotta  
 Marjorie Miner  
 John D. & Charun Minkler

Danny & Lana Mitchell  
 Fred B. Mitchell IV  
 Nancy L. Mitchell  
 Erica A. Moen  
 Randy E. Mohr & Mary Robinson Mohr  
 Gayle A. & Christopher Moir  
 Rev. James C. Moiso  
 William J. & Lottie Moldovan  
 Byron G. & Kathleen Molle  
 Frank & Trudy Monaco  
 Kari L. & Pat Monagle  
 Joanne R. & Robert Monteith  
 Julie & Wayne Montgomery III  
 Joyann & Anthony I. Montgomery  
 Jonn & Jennifer Moomaw  
 Dann & Kristin Moomaw  
 Patricia & Raymond Mooney  
 Rebecca M. & Robert H. Moore  
 Jim & Vivian Moore  
 Tracy & Teresa Moore  
 Florene & William H. Moore III  
 Wallace & Harlene Moore  
 Kenneth W. Moore, Jr.  
 Ann M. & Sheldon W. Moore  
 Larry A. & Michele J. Moran  
 Christina & Michael Moreau  
 Judith O. & Walter L. Morgan  
 Nancy E. & John Morgan  
 Nancy & Thomas Morlock  
 James R. & Sue Morris  
 Linda L. & Carl Morris  
 Susan Morris & Richard S. Plattner  
 Terrie Morrison  
 Quinn S. & Tamara Morrison  
 Roger D. & Shirley Morrow  
 Rachel M. Morse & Ernie Ascher  
 Amy J. & Justin R. Moser

Marlene K. & Peter Moser  
 Deryl & Donna R. Moses  
 Lisa & Rimon J. Moses  
 Christy A. & Norman Moss  
 David & Nancy Moyer  
 Glen D. & Rhonda Moyer  
 Kristin Moyles Janson & Clint Janson  
 Susan C. Mueller  
 Rev. Philip H. & Margaret Wilkinson Muir  
 Jeffrey T. Mullaney &  
 Patricia Morita-Mullaney  
 James Mullen  
 Judy A. & Martin Bradley Munn  
 Donna R. & Rev. Neil E. Munro  
 Eunice E. & Donald A. Munstedt  
 John & Susan Murio  
 Christopher B. Murphy  
 Barbara S. & Joseph Murphy  
 Michael Murray  
 Michelle Murray  
 Mark A. & Diane Musser  
 Louis & Margo A. Musso  
 Cathy P. & Michael J. Muzatko  
 Roy & Dorothy K. Myers  
 Rebecca J. Myers  
 Dorothy W. Myers  
 Maria & J. Todd Myers  
 Constance C. Myhre  
 Albert & Vikkie Naccarato  
 Jennifer A. & Rob Nagy  
 Hope E. & Bryan K. Nakagawa  
 Tomiye & Tsuyoshi Nakamura  
 Betty & John Y. Nakasone  
 Tracy M. Nakata  
 Jessica C. Nam  
 Helen E. & Robert Nankivell  
 Helen B. & Rev. Gerald S. Nash

Andrea K. & David Neault  
 Susan C. Nees-Bustos  
 Dr. Robert A. & Susie Neill  
 Marc J. Nelson  
 Rebecca C. & Zeke R. Nelson  
 William Nelson  
 Karen J. & Gordon E. Nelson  
 Lorraine Nelson  
 Rik Nelson & Nance Van Winckel  
 Frank & Craig Nelson  
 Dr. Sharon L. & Keith Nelson  
 Tom Dundas & Jody L. Nelson-Dundas  
 Ursula F. & \*Ed L. Neltner  
 Nancy & Ronald J. Nespechal  
 D. M. Neth  
 Katherine E. Neupert  
 Daniel H. & Patty Nevdahl  
 Gerald L. Newberry  
 Jeffrey P. & Teresa K. Newcomb  
 Mary C. Newcomer  
 Elizabeth & Daniel Newell  
 Tia L. & Sean Newell  
 Carol S. Newell  
 Karen K. Newhouse  
 Jane M. & Ed Newton  
 Lorinda K.F. & Douglas Newton  
 Phyllis J. Newton  
 Rev. Willis H. & Madeline A. Newton  
 Martin E. & Marianne Neyman  
 Kristen M. Nichelson  
 Teresa & Alan Nicholas  
 Timothy & Doreen Nicholas  
 Bernice P. & Darrel D. Nichols  
 Roberta P. Nicholson  
 Kenneth & Dora Nickel  
 Dolores & Tom Niebergall  
 Don Nieland

Anita & Robert M. Nielsen  
 Bill C. & Gwendolyn Nienhuis  
 Michael R. & Mert Nixon  
 Michael W. & Tammy Noel  
 Lynn & Gary Noland  
 Earl J. & Lydia E. Noland  
 Martha Norem  
 Sunny L. Norfleet  
 Krysten Norkaitis  
 Kaye I. Norris  
 Burke H. & Brenda Norton  
 Michael E. & Betsy T. Nunley  
 Stanley & Virda Nunn  
 Carolyn R. & Ron Nuss-Warren  
 Michael E. Nuzum  
 Kelli L. & Mark A. Nygren  
 Nancy Nyreen  
 James B. & Janet C. O'Connor  
 Kathryn & Timothy O'Laughlin  
 Lila D. Oaks  
 Maura & Roger Oakes  
 Heidi S. & Kevin M. Ob'bayi  
 Ernest & Iris A. Obregon  
 Donelle L. Odren  
 Vernon F. & Patricia Oertel  
 Harvey C. & Karen L. Ogden  
 Marie Ogle  
 Ronald C. & Janis L. Ogle  
 Erik & Julie Ohlund  
 C. Richard & Sandra Olander  
 Clark E. & Janice Oldroyd  
 Anna H. Olds  
 Donna L. & Thomas Oliva  
 Troy M. & Julie K. Oliver  
 Colleen D. & Mark C. Olleman  
 Roger & Elizabeth Olleman  
 Janet E. & Rev. Steven B. Olmstead



## Student Literati

Six English majors represented Whitworth at the National Undergraduate Literary Conference held in April at Weber State University in Ogden, Utah. **Jake McCoy, Leslie Nelson, Jeremy Cushman and Michael Achterman, all '04, Sid Friedman, '05, and Tana Trobaugh, '06, presented papers or read their creative writing at the conference. Most of the students also contributed to the college's annual literary journal, *Script*.**

Keith & Suzanne Olmsted  
 Sharon Denise Olney  
 Maj. Laura L. Olsen  
 Richard J. & Joyce Olsen  
 Barbara L. & David Olson  
 Craig M. Olson  
 Marlene Olson  
 Jared J. Onley  
 Eloise A. & Dwight Opp  
 Wallace G. & Nancy Opstad  
 Cruz D. Ordonez  
 Valene Ormiston  
 Richard E. Ormiston  
 Betty L. Ormiston  
 John D. & Mary L. Orr  
 James & Anne Orr  
 Delton & Mary Orthouse  
 Pauline & Randall Orloff  
 K. Anne Orwig  
 Charles E. Orwig  
 Vernon L. & Norma Osterback  
 Daniel T. Otani  
 Clifford & Diane Otis  
 David A. & Linda M. Ott  
 Dr. Evan L. & Gloria L. Otteson  
 Ann & Dr. James W. Owens  
 Jerry & Mary Ozenghar  
 Sharon & Eric Paavola  
 Leslie & Richard Paddock  
 Robert N. & Becky Page  
 Ursula J. & Bill Paine  
 Amber D. Palmer  
 Margaret A. Palmer  
 Judith & Dr. Samuel D. Palpant  
 Eddie C. Pankey  
 Robert D. & Jean E. Panther  
 Lawrence E. & Virginia L. Paradis

Ronald R. & Patricia Park  
 Drs. Soja Park-Bennett & Thomas Bennett  
 Anna L. Parkins  
 Monica L. Parmley  
 Dorothy E. Parpolia  
 Sheila M. Parpolia  
 Laurel Parratt  
 Richard J. & Danielle Parshall  
 Gerald P. Parsons  
 Gerald A. Paschall  
 Julie & Ronald Pasma  
 Rev. Thomas & Marilyn Patten  
 Rev. Robert C. & Arlene Patten  
 Rev. Mark & Linda Patterson  
 Fred C. & Nancy Patterson  
 Amy K. & Chris Patton  
 Archie & Patricia Patton  
 Amanda L. Paye  
 Betty G. & Robert Payne  
 Cheryl L. & Kerry D. Pease  
 Jean P. & Robert A. Peck  
 Gary V. & Carol A. Peck  
 Quentin E. & Virgie R. Peck  
 Eileen & Larry Pederson  
 C. D. Peer  
 Lee & Lorraine Pegan  
 Edward & Sharon Peistrup  
 Donald W. & Beverly K. Perdue  
 Daniel & Diane Peregoy  
 Susan M. Perkins  
 Nancy & Eric Perkins  
 Dana & Katherine Perreard  
 Stephanie & Christian Perreiah  
 Peggy I. Perry  
 Carol L. & Kevin N. Person  
 Carolyn S. & Michael R. Petek



Marcia & Keith Peterson  
 Judy & Scott Peterson  
 Deborah A. Peterson  
 Susan K. & Chuck Peterson  
 Mary Lou & David E. Peterson  
 Kathleen L. & Rev. Robert P. Peterson  
 Leif A. & Amy Peterson  
 Florence T. Petheram  
 Mary Lyn Pettie  
 Dwight & Jacquelyn Petty  
 Martin P. Pfeiffer  
 Joe & Virginia Phelan  
 Ivan G. & Sandra Phillips  
 Ned E. Phillips  
 Steve & Nancy Phillipy  
 Rev. David A. & Carol Phillipy  
 Everett L. & Neoma M. Phipps  
 Kathy M. & Sam Pickard  
 E. M. Pickard  
 Elizabeth J. & Del Pickarts  
 Barbara L. Pickett  
 Barbara A. & Steven Pickett  
 Donna M. & Bruce R. Pierce  
 Rev. Don F. & Marion Pierson  
 Lynne E. & David Pinkerton

Catherine Pittman  
 Robert G. Plopper  
 Shelley A. & Ross Plummer  
 Melody S. & Richard Podlas  
 Glenna M. & David Polage  
 Beatrice A. & Don Polinsky  
 Corinne W. & Harvey L. Polley  
 David W. & Julie L. Pomante  
 Dr. Don & Jane Pope  
 Andrew S. Porter  
 Kathryn L. Porter  
 Mark D. & Sue A. Porter  
 Virginia L. Porterfield  
 Dr. Linda & Jim Porzelius  
 Dean & Kathy Potratz  
 Yvonne Potter  
 Judith C. Potter  
 John & Marianne Powell  
 Carol A. & Doy E. Prater  
 Anthony J. & Connie Predisik  
 Bruce & Susan Preuninger  
 Betty J. Price  
 Janet M. & John Priddy  
 Andrea & Ron Pride  
 John & Patsy Prins

Norma Prior  
 Harold G. & Grace Probert  
 Ruth Proctor  
 Judith E. & Richard Prout  
 Barbara G. & Richard Pruitt  
 Sarah & Matthew Pudlas  
 Danielle J. Pulham  
 Caroline E. Purdon  
 Stanley L. & Elaine Quade  
 Jeanee L. Quan & Brian Linden  
 Rev. David S. & Virginia Quiring  
 William B. & Patricia Rabe  
 Cynthia & Phil Rach  
 Irma K. Rader  
 Darin D. & Erin J. Radke  
 Andrew & Kirsten Ragen  
 Lee & Jean Raibley  
 Sterling P. Rainey  
 Randy & Lola Ramey  
 Doris B. Ramey  
 Abram F. & Adelina H. Ramirez  
 Rafael L. & Mary Ramirez  
 Paul K. & Wendie R. Ramsey  
 Jonathan F. Randolph  
 Bonnie S. & Anthony Ranno  
 Donald Rasmussen  
 Marilyn E. Ratcliffe  
 Allen W. Ratcliffe  
 Jill R. Rauch  
 Danielle & Henry Rawson  
 Janet & Robert Read  
 Arthur J. & Joanne D. Read  
 Clara E. Reames  
 Robert A. Reavis  
 Laura J. & Larry J. Reber  
 Carol & Roger Records  
 Pauline M. & Glenn Rediger

Scott R. Rednour  
 Larry J. & Jane Reed  
 James & Traci Reed  
 David & Teresa Reed  
 Autumn M. & Donald Reed  
 Cynthia Reed  
 Daniel B. & Cynthia Reese  
 John M. & Elaine Reese  
 Joshua D. Reeves  
 Nancy M. & Rev. Paul Reeves  
 Roberta E. Reid  
 Martha Reid  
 Richard & Susan M. Reinhart  
 Dr. Edward & Renee Reisman  
 Kathryn M. & David Remington  
 Thomas L. Renne  
 Don D. & Joan Ressa  
 Linda & Richard Rethke  
 Janet K. & Rev. James Rettig  
 Becky A. Rettkowski  
 Debbie L. & Larry Reynolds  
 David & Helena Reynolds  
 David & Marilyn D. Rhodes  
 Sarah L. Rice  
 Jerald T. Rice  
 Kelsey A. Rice  
 Joyce & Hollis E. Rice  
 Dr. Ronald B. & Sharon Rice  
 Hilbert J. & Patti R. Rice  
 Sydney Rice & Henk Benedictus  
 Sylvia A. Richards & Leonel Galaviz  
 Kyra S. & Dustin Richardson  
 Eloise L. Richardson & Bob Evans  
 Joseph F. Richer  
 Derek W. Richman  
 Barbara L. Richter & Ken R. Carwin  
 Sandra S. & William H. Ricker

Jennifer & Robert Rickman  
 Ray & Shawna E. Ricks  
 Linda L. Riddle  
 Kathi M. Ridgeway  
 Julie L. Riegel  
 Peter W. Riehle  
 John W. & Verla Rigsby  
 Joy D. & Mark P. Riley  
 Susan B. Ring  
 Carol M. & Jerry L. Ringer  
 Drew L. Rittland  
 Michael B. & Joanne M. Ritter  
 Bobby G. & Joan Roach  
 Shannon O. Roark  
 Emily R. & Joshua J. Robbins  
 Mary A. & Matthew Robbins  
 Glen W. Roberts  
 Stanley J. & Eugenia Roberts  
 Dorothy & Jack Roberts  
 Christopher & Kimberly Roberts  
 Deanda & Dr. Don Roberts  
 Amy Roberts Wark & William Wark  
 Connie J. Robertson  
 Ray W. & Sylvia Robertson  
 Tami H. Robinson  
 Jean S. & John E. Robinson  
 Carol J. & Ronald L. Robinson  
 Laurie L. Robinson  
 Kenneth D. & Marianna Robinson  
 Sharon & Timothy Robnett  
 Rev. Dr. Ross & Margaret Robson  
 Robert J. & Pat Roby  
 Betty J. Rockwell  
 Linda & R. Scott Rodin  
 John P. & Marie Rodkey  
 Dr. George W. & Dorothy Rodkey  
 Barbara Roemer

Lt. Col. Ray E. & Julianne Roestel  
 Switzer & Tiffanie Rogers  
 Lynnette E. & Daniel A. Rogers  
 Rev. John H. & Doris Rogers  
 Robert G. & Lorilyn Rogers  
 Kathryn A. Rogers  
 Adolf C. & Angela Rohrman  
 Leonard Rolph  
 Joanne C. & Paul J. Romanaggi  
 George S. & Tanya Romanoff  
 Marjorie Roose  
 Felicia Rosch  
 Nancy & Raymond Rosch  
 Jennifer & Larry Roseman  
 Michal K. Rosenberger  
 Keith Ross  
 James A. & Wilma Ross  
 Robert L. Rossi  
 David M. Roth  
 Cheryl A. & Christopher Roth  
 Martha Rothschild  
 David C. & Lorraine M. Rowand  
 Doris M. & Stanley Rubini  
 Patty & Robert Rubitschun  
 Mildred L. Sandwith  
 Dr. Robert H. Ruby  
 Arthur A. & Barbara E. Rudolph  
 Phillip E. Ruebel  
 Phillip & Vicki Ruebel  
 Gordon & Janet Ruehl  
 Patricia S. & Marc Ruggiero  
 Timothy & Christine Rundquist  
 Donna & James Runge  
 Jay H. & Jackie Runkel  
 Priscilla & Richard F. Runkle  
 Ronald P. & LeAnn L. Rupke  
 Leslie W. Rurey

Laura T. Rush  
 Carolyn A. & William M. Russell  
 Randy L. & Shawna M. Russell  
 James L. & Mata Ann Rust  
 Carolyn R. & Roger Rutherford  
 Diane E. & Dr. Robert E. Rutherford  
 Valerie L. & Eric Rux  
 Sylvia & Harvey Ryan  
 Carol S. & Michael Rydbom  
 Kari L. & Michael Rydholm  
 Charles R. Saari  
 Ann R. & Loren Saari  
 Andrea L. Saccoccio  
 Cynthia K. & Masami R. Sakai  
 John R. & Barbara Saldine  
 Katherine Salmon-Newton & Robert W. Newton  
 Marian Salt  
 Edith C. & Robert F. Salter  
 Raymond & Lu Ree A. Sampson  
 Natalie M. & Randall N. Sandberg  
 William E. & Janet C. Sanders  
 Janet & Lloyd Sandquist  
 Kathleen V. Sandusky  
 Robert Schloss  
 Robert & Theresa Sanford  
 Donald A. & Vicki M. Santos  
 Elena M. & Dr. Jeff Sanwick  
 Steven P. & Collean Sapp  
 Teresa & Michael Sardinia  
 Lisa M. Sardinia  
 Nathan D. Sartell  
 Donna J. Sather  
 Terry Jo & Darrell Sather  
 Ruth A. & Royce Satterlee  
 Rev. Walter K. & Dolores Sauer  
 David A. & Sandra Sauer

Melanie S. Sauer & Dr. Luther W. Beegle  
 Kent C. Sauls  
 Lois Sautter  
 Marybelle & James Savage  
 Bill & Judy Saye  
 Judy & Mel Sayler  
 Marian I. Scafe  
 Mathew Scamehorn  
 Sandy J. & Walt Scamehorn  
 Christy Scammell  
 John Filer & Leslie Schaaf-Filer  
 Ronald E. & Nikole R. Schafer  
 Herbert P. & Elaine Schaffer  
 Sarah J. Schaldack-Slaats & Mike Slaats  
 Martha & Roger Schaller  
 George H. & Mary E. Scharff  
 Elizabeth L. & Raymond E. Schatz  
 Lyn C. & Alan Scheele  
 Nancy Schengel-Douglas & Mike Douglas  
 Paul R. & Maureen E. Schilperoot  
 Rex A. & Sharron Schimke  
 Fern & Paul Schlesinger  
 Nathan G. & Nancy Schloetel  
 Dr. Harm H. & Marie Schlomer  
 Robert Schloss  
 Janet K. & John D. Schlotfeldt  
 Ruth & Rev. Gerald Schmeling  
 Kay M. Schmerer  
 Tara M. Schmidt  
 Bill & Jessie Schmidt  
 Robin L. & Errol E. Schmidt  
 Joann M. & Joseph Schnellbach  
 Joseph Dorsey Schneller  
 Richard & Gayle Schock  
 Grace & Don Schofield  
 Vicki Schooler  
 Rachel A. & David Schottky



Mary F. & Carl Schroeder  
 Alexander D. & Kelli Schuerman  
 Dennis & Jan Schuerman  
 Jerry & Janet Schulmerich  
 Judith P. & Paul D. Schultz  
 Lynette E. & Dale Schultz  
 David R. & Heather A. Schultz  
 Douglas A. & Kelly A. Schulz  
 Gregory A. & Diana S. Schuster  
 Meagan Schwartz  
 Gordon M. & Thea Schweitzer  
 Lynn D. Schwindel  
 Linda G. & Daniel Sciaroni  
 Dale F. & Carol Sciuchetti  
 Mark L. Scott  
 Sarah B. Scott  
 Nancy E. & Timothy J. Scott  
 John M. & Josephine Scott  
 Kristina C. Scott  
 James F. & Lois H. Scott  
 Holly & Richard Scriven  
 Dan & Pamela Scruggs  
 Earl L. & Joann Seagrave  
 Stephanie & Dan Seely  
 Krista S. & John Seely  
 Douglas A. Segur  
 Kathy R. Seher  
 Wesley A. Seideman  
 Ruth & E.E. Seignemartin  
 William & Virginia Selzer  
 David M. Seman, D.D.S.  
 Elayne A. & David Semko  
 Robert R. & Patricia A. Senter  
 Roberta & John Seremeta  
 Yvonne D. Sertich  
 Kerry A. Servas  
 Donald A. & Rita G. Sesso

Virginia E. Seth  
 Ann-Marie Severino  
 Lowell & Marion Severud  
 Rev. Dale & Jinny Sewall  
 Cathy S. & Tracy Shaffer  
 Ronald W. & Janet Shaffer  
 Fred N. & Phyllis A. Shaffer  
 Mardelle F. & John C. Shagob  
 Philip & Amy Shahbaz  
 Robert G. & Carol V. Sharp  
 Diane V. Sharp  
 Richard D. & Lois Sharp  
 Laurie Sharpe  
 Gary E. Sharpsteen  
 Patricia A. & William Shaver  
 Garth B. & Margaret Shaw  
 Frances B. Shaw  
 Luella L. & John Sheldon  
 Kaye L. & Paul Shenk  
 Heather A. & Peter G. Shennum  
 Sally A. Shepard  
 Edward A. Shepherd  
 Kenneth C. & Yolanda Sherman  
 Andrew J. Shields  
 Susan L. & A. Wayne Shira  
 Barbara J. & Richard Shobe  
 Jan Shoemaker  
 Robert & Helen Shogren  
 Robert G. Shogren  
 Merwyn R. Shonk  
 Thomas M. & Linda A. Shook  
 Lee & Gwen Shook  
 Randy W. & Kathryn Shoop  
 Kathleen T. & Keith K. Shota  
 Deloris & Scott Shriner  
 Donald A. & Kelly Shrumm  
 Beth E. & Matthew E. Shupper



**Tim Bruce**

Whitworth alumnus and La Conner School District Superintendent Tim Bruce was recently selected as a recipient of the 2004 Robert J. Handy Most Effective Administrator Award. Bruce earned his bachelor's and master's degrees in education at Whitworth in 1980 and 1985, respectively.

During his 10-plus years with the La Conner School District, Bruce has fostered connections between the central office, staff and community that have been pivotal to student success. The results — shared leadership and team approaches involving teachers, board members and community members — have created more positive involvement and increased student and community pride in the school district.

Rachel A. Sibley & James J. Street  
 Mary L. & Richard E. Sievers  
 Emily M. & John Simmons  
 Elouise M. & Michael Simms  
 Dr. Clarence & Koreyne Simpson  
 Priscilla T. Sims  
 Walter M. & Cheryl K. Sines  
 Devon E. & Paul L. Barrett  
 Dawn J. Sisk  
 Mary E. & Robert L. Sisson  
 Debbie L. Sittser  
 Dayna Asunción & Vince Sivaneo  
 Laura Skaer  
 David W. Skinner  
 Karen A. Skogman  
 Dr. Corliss K. & Roger Slack  
 Wendy R. & Jim T. Slawter  
 Eric H. & Sally Slipper  
 Lester R. Sloan, Jr.  
 Priscilla C. Small  
 Elizabeth & Leon Smart  
 Rev. Donald & Susan Smidt  
 Patricia I. & Jeffrey S. Smith  
 Diana B. & Jason C. Smith  
 Carianne Patrice Smith  
 Korina M. Smith  
 Denise J. & Craig Smith  
 Sheldon L. & Erin Smith  
 Sherrie L. Smith  
 Joel W. & Virginia A. Smith  
 Alice M. Smith  
 Janis M. & Robert T. Smith  
 Debbie K. & John E. Smith  
 Jennie & Paul Smith  
 David M. & Lori Carlton Smith  
 Janet M. Smith  
 Darrell T. & Dorothy Smith

Betty L. Smith  
 Grace & H. Wayne Smith  
 Jane A. & Glenn C. Smith  
 Lee G. & Deborah Smith  
 Marvin D. & Ethel Smith  
 Sue V. & William Smith  
 Ronald G. & Deloris A. Smith  
 Sean A. & Amy J. Smith  
 Ladd C. Smith  
 Janet K. Smithson  
 Robert C. Smoldt  
 Dr. Carol J. Smucker  
 Leslie & Andrew Smythe  
 W. R. Smythe  
 Donna & Edward Snellgrove  
 Ted N. Snider  
 Virginia A. Snip  
 Colleen S. & Terry L. Snow  
 Thomas M. & Georgia V. Snyder  
 Debra J. Solt  
 Rev. Janet & Keith Sonnenburg  
 Patty L. & Stewart Sonneland  
 Regina & Jeffrey Soprano  
 Meghan N. Soptich  
 Daniele & Melinda Soptich  
 Anne V. & Rev. Ronald D. Soucy  
 John A. & Jennifer Sowers  
 Linda J. & Terrence Spaeth  
 Dortha Spalek  
 Paul A. Spangler  
 Barbara L. & Dr. Donald M. Spellman  
 Vickie D. & Wayne Spencer  
 Sharon G. & Bro. H. Spencer  
 Charles D. & Traci R. Spencer  
 Beverley F. Sperry  
 David M. Sproul  
 Carla F. & Stuart Squires

Barbara L. Squires  
 Connie J. & Daryl J. Squires  
 L. Holland St. John  
 Laurie A. & Charlie Staley  
 Alan M. Stanfield  
 Michael & Nona Stanfield  
 Angela D. & Aaron Stark  
 Donnas & Roger Starkweather  
 Brian & Rochelle Starr  
 Nancy Starr  
 Nancy C. & Fred L. Starrh  
 Thomas A. & Victoria S. Stave  
 Jeffrey D. & Yvonne Stave  
 James R. & Misti Steach  
 Mary A. & Roy Stearns  
 Gary B. Stebbins  
 Mark R. & Sheryl Stedman  
 Dale & Marilyn Stedman  
 Marjorie Steele  
 Dr. Craig L. & Kathy S. Steele  
 Dawn M. Steffen  
 Kristen L. Steffens & Jeffrey Mamion  
 Nancy & Stanley Stellingwerf  
 Margaret S. & Brad Stenberg  
 Traci L. & David C. Stensland  
 Lora G. & Robert A. Stensland  
 Allison & Morris Stephens  
 Cecelia & Michael Stephens  
 David C. & Marianne Deal Stephens  
 Lavaughn & Terry Stephens  
 Patricia A. Stephens  
 Bret D. Stephenson  
 Dustin D. Stevens  
 Zada E. Stevens  
 Clyde & Wendy Stevick  
 Connie & Robert Stewart  
 Donna Stewart

Douglas & Ellen Stewart  
 Beth & E. Eugene Stewart  
 Gail L. & Cameron Stewart  
 Gary E. & Rebecca Stewart  
 William R. Stewart  
 Marti M. Stewart  
 Sarah D. Stewart  
 Carol & David Stewart-Smith  
 Kristen M. & Andrew J. Stinson  
 Mark P. Stinson  
 Linda S. Stitt  
 Gertrude T. & Lafe Stock  
 Beverly T. Stockman-Mulanax & Craig Mulanax  
 Thomas & Katie Stocks  
 Robert I. Stockton  
 Chad C. & Teresa Stoddard  
 Donna J. & Lloyd A. Stoess  
 John G. & Harriet Stoner  
 Peter & Marin Stradinger  
 Cheryl L. & James H. Strandly  
 Dorothy Stranger  
 Beverly I. & Gregory S. Strate  
 George W. & Janet K. Strattan  
 Dirk J. Stratton  
 Daniel & Vanessa Straw  
 Rev. Charles & Connie Strawn  
 Carrie L. & Aaron M. Streepy  
 Cathy & John Strohmaier  
 Anne-Marie & Trevor Strohmaier  
 Carolyn & Edward Strong  
 Julia K. Stronks  
 Laura M. & Russell Strudwick  
 Craig & Mary A. Stucky  
 Joseph J. & Carol Lewis Stuhley  
 Russel W. Sturgeon & Lisa M. Tappan-Sturgeon

Alice L. & Larry Sturman  
 Carolyn & Kenneth Sugarman  
 James E. & Lauren M. Sullivan  
 Julie M. Sund  
 Julie L. & Scott Sundem  
 Amanda K. & Erik M. Sundet  
 Mrs. M. C. Suomela  
 Susan K. Surby  
 Dallas B. Sutton  
 Harry T. Suzuki, Jr.  
 Joanie & Rock Svennungsen  
 Marleen & Spencer Swalm  
 Dr. Allan H. & Janet L. Swan  
 Rev. George E. & Anne Amburgey Swanson  
 Oliver & Doris L. Swanson  
 Jonathan Swanstrom  
 Kenneth E. Sweatt  
 Jessa Swenson  
 Keith & Lonna Swenson  
 Susan W. & Alan N. Swent  
 Danielle K. Swift  
 Patsy & Richard Swindler  
 Judith Sylte & James R. McLeod  
 Gordon Sylte & Susan Goodrich  
 Melissa Fox Symington & Scott Symington  
 Clifford & Kate Tadema  
 Carol C. Tague  
 Eric F. & Amy S. Talbott  
 Sue L. & Dana Talley  
 Dr. Raja S. & Amal Z. Tanas  
 Kathy Tanksley  
 Susan S. & Ken Tavernier  
 Sean A. Taylor  
 EmmyLou C. Taylor  
 Shilo D. Taylor  
 Joshua D. Taylor  
 Brett & Kelley Taylor

Mary Rand & Ronald R. Taylor  
 Sonya & Tim Taylor  
 Cari E. & Tracy N. Taylor  
 Mary & Clifford J. Taylor  
 Rev. J. Graley Taylor  
 Marilyn Taylor  
 Stuart R. & Francie Taylor  
 Suzanne M. & Timothy Taylor  
 Julie A. Taylor  
 Rev. Leigh & Marlene A. Taylor  
 Patrick W. Taylor  
 Sharon Taylor  
 Meredith A. TeGrotenhuis  
 Stacia J. Teague  
 Elona & Joseph Teague  
 Dr. Ann & Jim Teberg  
 Juanita & Chester Templin  
 Rev. Richard L. & Virginia J. Terry  
 Isabelle M. Tesdall  
 Jason R. & Julie A. Thackston  
 Laura G. & Kenneth J. Thayer  
 Marc A. & Cindi L. Thielman  
 Daniel L. Thieme & Carla Swanson Thieme  
 James & Debra Thoen  
 Thomas M. & Trisha Thoen  
 Mitchell M. & Sarah M. Thomas  
 James E. Thomas  
 \*Kathryn A. Thomas  
 Diane J. & Rick M. Thomas  
 John M. & Cathie Thomas  
 Evelyn & Robert J. Thomas  
 Alicia & Ken Thompson  
 Steven A. & Lynn Thompson  
 Beatrice E. Thompson  
 Norma L. Thompson  
 Patsy R. Thompson  
 Robert E. & Jane Thompson

Russell L. & Betty-Jean Thompson  
 Sandra J. Thompson  
 Georganne Thomsen  
 Erica M. Thomsen & Joseph Friedman  
 Carol A. & Patrick W. Thomson  
 Elizabeth S.K. & Jeff Thoreson  
 Patricia A. & Dale Thornburch  
 Kathryn & Clyde Thorndike  
 David W. & Heidi F. Thornhill  
 Edythe E. & John M. Thornton  
 D. John & Vikki Thornton  
 Rev. Glen & Eugenia Thorpe  
 Margaret Thraillkill  
 J. Ellen & Walter Tibert  
 Cynthia H. & Mark A. Tidd  
 Betty Barker Tiffany  
 David & Cindy Tikker  
 Rev. George A. & Virginia Till  
 Amy & Steve Tillotson  
 Lois M. Tillotson  
 Kathleen L. & Richard Tingstad  
 Lois J. & Rev. Ralph W. Tipple, Jr.  
 Jennifer M. Tissue  
 Jason R. Tobeck  
 Gordon R. & Penny L. Tobeck  
 Christopher & Karen Tobin  
 Kari Todd  
 Jett G. & Shayne T. Tokita  
 Heidi K. & Patrick Tolentino  
 Cecilia L. & Neal Tollisen  
 Dorothy & Henry Tombari  
 Yvaughn G. & Jack Tompkins  
 Barbara & Roger Tompkins  
 Dan & Susan Tomscheck  
 Brenda J. & Rodney Topel  
 Mark A. Toppe  
 Ann M. & Edmund Torkelson

Steven M. & Rev. Linda Toth  
 Richard & Elizabeth Totten  
 Angela M. Toulou  
 Linda A. Towle & Steven D. Roberts  
 Patricia A. & Ken Tracy  
 Roberta & Thomas Traeger  
 James F. & Julie A. Travis  
 Patricia C. & Ronald M. Trefry  
 Cdr. A. Ronald & Alice J. Treibel  
 William G. & Maxine M. Trenbeath  
 Charles H. & Marilyn Trimm  
 Carol E. & Daryl V. Triplett  
 Christine & William Trochman  
 Diana M. Trotter  
 Karen & Van Troxel  
 Debra L. Trujillo  
 Tashiko Tsudaka  
 Nancy J. Tsutakawa  
 Orville V. & Marcie D. Tucker  
 John R. & Deborah K. Tully  
 Douglas & Joanne Tunnyhill  
 Kyle Y. Turner  
 Kristen M. Turner  
 Betty Turner  
 Carol A. & Kermit Turner  
 David P. & Shelly Turner  
 April L. & Robert Tuttle  
 Earlane & Kevin Tuurie  
 Rebecca A. & Steve Twitchell  
 Charles & Rita Uber  
 Lloyd G. & Mary Jo Uecker  
 Dave J. Ugetti & Katie McGee  
 Candace E. Uliano  
 Joel & Linda Ulrich  
 David L. & Jeanne T. Underwood  
 Rev. Melvin R. Unruh  
 Margarette L. & Ernest Unruh

Michael A. Uphus  
 Susan & Ken Urie  
 Mike & Darla L. Valdez  
 Richard & Carol Van Belle  
 Rev. Vernon R. & Marilyn M. Van Der Werff  
 Martin L. Van Dyken, D.D.S.  
 John Van Engelen  
 John H. Van Lierop  
 Diane M. & Joel V. Van Ornum  
 Sandra & Philip Van Valkenburg  
 Marlene M. & Gary VanBrocklin  
 Don VanDam  
 Sharon N. & Terry VanEaton  
 \*Dr. George L. VanLeuven  
 Rev. Jerry L. Van Marter & Eva Stimson  
 Jay & Marlys Vander Pol  
 Rev. Marlin A. & Dr. Judith Vander Wilt  
 Bret W. & Emily J. Vanderipe  
 Bonnie Vandervert  
 R. Dale & Doris Vandewalle  
 Max & Chris Vandiver  
 Lela Vanleuven  
 Amy & Jeremy Varo-Haub  
 David J. & Tamara K. Vaughn  
 Michael W. & Shannon B. Vaughn  
 Cheryl D. & Steve Vawter  
 Mr. & Mrs. Melvin J. Veldhuizen  
 Janet & Ronald Veltkamp  
 Margaret & Charles Venemon  
 Mark & Susan Venn  
 Sarah Olsen  
 Brownie S. & John Viall  
 Dr. Patricia J. & Paul Vincent  
 Suzanne & Jason Vingelen  
 Paul & Patricia Cole Vinther  
 Corinne & Gary Visser  
 David L. Voge



## Bryan Depew

The first men's basketball player in Whitworth history to earn All-Northwest Conference First Team honors in each of his four seasons, Bryan Depew, '04, also became the first Pirate player to break the 2,000-point barrier; he finished his career with 2,013 points and is now Whitworth's all-time leading scorer. "I didn't set out to get this record," says Depew, who credits the accomplishment to those who mentored him and shared the court with him during his career. "Every one of my teammates and coaches made this possible."

Depew was named to a number of All-America and Academic All-America squads, and was named Player of the Week in the NWC 10 times during his Whitworth career. Depew, a business and accounting major, will attend law school.

Mrs. William Vogel  
 Margaret & Steven Vonk  
 Gerald P. & Kathy Vosberg  
 Ryan W. Voytovich  
 David L. & Judith Wackerbarth  
 Dr. Richard & Shirley Waddell  
 Rev. William H. & Mary Waddell  
 Carole & William L. Wade  
 Doris C. Wages  
 Susan L. & Eldon Wagner  
 Jo Ann Wagstaff  
 Murray E. Waid, Jr.  
 Madeline Waid & James Owens  
 Danielle M. & Brian Waite  
 Mary L. Waite  
 Richard & Beverly Eseke Waite  
 Mary V. & Ronald Wakefield  
 Karen D. Walker  
 Deborah L. & John Walker  
 Richard D. Walker  
 Barbara J. Walker  
 Clyde W. & Therese F. Wall  
 Dr. Dewey & Marion Wallace  
 Carolyn J. & Rick Wallace  
 Karen E. Wallin  
 Linda M. Walline  
 Lloyd R. & Janis Wallis  
 Kim & Richard Walter  
 Deborah C. Walter  
 Sally J. & Denny Waltermire  
 Debra A. & Michael L. Walthers  
 Ellen Walton  
 Dr. Jon M. & Sally A. Wamba  
 Yingyi Wang  
 Janette M. & Kenneth Wanless  
 Rev. Hendrick G. & RosaLee Wapstra  
 Keith H. & Stacey S. Ward

David C. & Christine Ward  
 Carolyn R. & Mark Ward  
 Scott & Jennifer Ward  
 Karen A. & George Ward  
 Lynn G. & Theresa M. Wardle  
 Arthur E. & Eloise A. Ware  
 Agnes L. & John R. Warn  
 Janine R. Warner  
 Jane & Steven Warner  
 Ruth Ann Warner Meisner & Mike Meisner  
 Robert & Suzanne Warren  
 Margaret E. Warren  
 Ray & Beverly Washburn  
 Marylyn T. & Paul Waters  
 Mitchell & Jana Watney  
 Andrew & Chrysis Watson  
 Carol R. Watson  
 Jennifer C. Watt  
 Joanne Watts  
 Steve W. & Kathy Watts  
 Shawna Weaver  
 Marilyn C. & Lyle Webber  
 William J. & Beth I. Webber  
 Daniel & Kyrsten S. Weber  
 Dr. Dan & Juanita Webster  
 Rita J. Webster  
 Bruce E. & \*Judith Webster  
 Margee K. & John Webster  
 David C. & Mary Webster  
 Boyd & Sandra Weed  
 Elva S. & Robert A. Weeks  
 Ruth & Harry Wegeleben  
 Jeanne L. Wehr  
 D.E. & Geneva Weidner  
 David H. & Susan L. Weinman  
 Debbie J. & Richard E. Welch

Miriam J. & Kenneth R. Weldin  
 Dean R. & Donnajean Wendle  
 Darwyn J. & Linda J. Wendt  
 Cari A. Wenig  
 Meagan & Mitchell Wentworth  
 Michael P. & Vivian S. Werner  
 Dr. Bruce & Pamela Werner  
 Kandace M. West  
 Lawrence & Daidre West  
 David J. & Karen A. West  
 Birdie G. West  
 Nancy West  
 Patrick J. West  
 Bonnie & Jeffrey West  
 Sue & Bob Westergard  
 Ernst Westphal  
 Peggy J. Wetmore  
 Janice & Robert Whaley  
 Paul A. & Carolyn Wheatcraft  
 Ellen M. & Gary E. Wheeldon  
 Amy L. Wheeler  
 Lucille A. Wheeler  
 Ann K. & Dennis A. Wheeler  
 Karen E. White  
 Virginia M. & Harry J. White  
 Dr. Ginny Whitehouse  
 La Cinda & Wayne Whiteman  
 Rev. Ethen & Carolyn Whitman  
 Beth M. & Don Whitney  
 Barbara W. & Donald R. Widrig  
 Leonard D. Wiersma  
 Margaret & Dr. Stephen Wieting  
 Evelyn J. & John Wigen  
 Sharane M. & Jared Wiitala  
 Jennifer L. Wilcox  
 Linda & Roger Wilhelm  
 Kenneth & Susan Wilhelm



Nancy R. & Robert Wilkens  
David & Kristy Wilkinson  
Carolyn C. & Dennis Williams  
Lesley D. Williams  
Dr. Betty F. Williams  
Margaret S. Williams  
Trevia Williams  
Mary Ann M. Williams  
Katherine S. & Dale Williams  
Judy L. & Robert A. Williams  
Glenn E. & Kathy K. Williams  
Joan E. & Gary Williams  
Samuel B. & Flori K. Williams  
Thomas Williamson & Karen Pritchard  
B. Armita Willis-Rector & Robert Q. Rector  
Dr. Byron S. & Carol S. Wills  
Maxine & Bruce Wilsey  
Dr. Leland & Ginger Wilshire  
Carol & Richard Wilson  
Leigh & Janet G. Wilson  
Beverly J. & Larry W. Wilson  
Brenda Wilson  
Linda K. & Richard Wilson  
Shawn E. & Jane Wilson  
Angelika Wilson-Wipp & Gordon R. Wilson  
Harold B. & M. Elaine Wimpy  
Nicole R. Windhurst  
Elizabeth Wing  
Rev. Stephen C. Wing  
Marjie S. & Jeff W. Winikoff  
Vivian Winston  
Russell A. & Beth Winterhof  
Robert J. & Lois Winters  
Kathryn T. Wiser

Mark T. & Kate Wiser  
Hiedi R. & Mark Witcher  
Michael A. & Ann M. Witkowski  
Dustin A. Wyrick  
Barbara J. & Donald R. Wold  
Ada L. Wolf  
Joe Wolfe  
Brian H. & Linda L. Wolfe  
Carol J. Wolfe  
Rev. Gary L. & Janet R. Wolfer  
Beverly J. & Elmer Wolff  
Sherrill L. Wollam  
Darlene J. & Paul Wolleat  
Glenn H. & Ruth Wollweber  
Thomas Lee Wolsborn, Jr.  
Theodore N. Wong  
Gerald K. Wong  
Teresa S. & Thluey H. Woo  
Lorraine J. & James L. Wood  
Helen D. & Rev. Merle E. Wood  
Matthew C. & Desiree Woodruff  
Rebekah K. & Matthew T. Cowden  
Christopher J. & Carmen P. Woods  
Timothy R. Woods  
Ward R. & Joan Woods  
Lynn K. Woodworth  
Russell & Nonna Working  
Gary K. Wright  
Howard W. & Robin A. Wright  
Gloria D. & \*Oliver W. Wright  
Lori J. Wright  
E. Wayne & Nancy Wright  
Anne Wright-Shelton & James A. Shelton  
Douglas Wunsch  
Valeria M. Wurster  
Kathryn L. & Thomas Wurtz  
Juanita B. Wyatt

Al Wylder  
Dr. Keith D. & Tanya Wyma  
James & Karen Wynne  
Peter A. & Ivy Y. Yagi  
Paul E. & Joanna Yoder, Jr.  
Clifton M. & Faye A. York  
Carolyn & Stephen Yoshihara  
Nellie & Thomas Yotty  
Amber K. Young  
Florence E. & Harold E. Young  
Cheryl R. & Dick Young  
Amanda M. Young  
Randolph & Wendelin Young  
Gary S. & Linda S. Young  
Janice J. & Donald Young  
John A. & Merry E. Young  
Kenneth O. & Louise M. Young  
Donna L. & Steven Zeck  
C. Edward & Wilma Zeiger  
Karl & Suzan Zeiger  
Paula A. Zeller  
David M. & Stasia Zemke  
Lawrence & Linda Zenger-O'Brien  
Marilyn Y. & Ted Zetterberg  
Xiaogang Zhang  
Roberta & August Ziccarelli  
Pamela H. & James Ziegler  
Sheila & Richard Zilar  
Deborah & Charles Zimmerman  
Ronald L. Zirkle  
Paula F. Zirkle  
Robertta Zorn  
Virginia H. & Cecil Zurfluh  
Glenna Zwainz  
Robert & Susan Zych



Lara Anderson

Lara Anderson's 10-year career at Starbucks promised great things once she finished her undergraduate degree. So, despite the fact that she lives on the coast, she decided to attend Whitworth.

"I chose to commute to Whitworth because it took me only 17 months to complete my organizational-management degree," says Anderson, '04. "I was able to apply program/class objectives directly to my responsibilities as a leader and business operator for Starbucks," she says.

Anderson, who was promoted to district manager from her pre-graduation position of store manager, now plans to pursue a graduate degree closer to home. "My Whitworth journey gave me the opportunity to discover my passions: leadership, group dynamics, and organizational culture," she says.

#### CORPORATE

3M DMS  
A Perfect Web  
Abundant Life Massage Association  
Adobe Systems, Inc.  
Akeco, Inc.  
Albertson Insurance Services, LLC  
Allied Envelope Company  
Allstate Foundation  
Alpine Mortgage  
ALSC Architects, P.S.  
Amersham Biosciences Corp.  
Amgen Foundation  
Aon Consulting  
Applebee's  
Automatic Data Processing, Inc.  
Awards by A. Ward  
Azteca Mexican Restaurant  
Bank of America Foundation  
Bargreen Ellingson, Inc.  
Basket Treasures  
Bear Creek Lodge  
Bechtel Foundation  
Beemer & Mumma, Attorneys at Law  
Bennidito's Pizza  
Best Western  
Bethany Presbyterian Women  
Bickleton Presbyterian Goodwill Society  
Bielec Enterprises, Inc.  
Bielec Industrial Complex, Inc.  
Bob Davis & Associates, Inc.  
Boehm's Chocolates & Candies  
Boeing Employees Credit Union  
Boston's Pizza  
Brewster Propane, LP  
Bryan D. Anderson, D.D.S.  
Camp Spalding

Car Emporium  
Casual Corner  
Cathay Inn  
Celtic Cross Presbyterian Church  
Central Chiropractic  
Champion Equipment Leasing, LLC  
The Chapel of the Country Club of LaCholla  
Chic-A-Ria Restaurant  
Christian Supply Center  
Chuck E. Cheese Pizza  
City Glass  
Coeur d'Alene Tractor Co.  
Columbia Ford, Inc.  
Community Presbyterian Church, Buckley  
Community Presbyterian Church, Washtucna  
ConocoPhillips  
Cookies by Design  
Cool Temp, Inc.  
Cornerstone Financial Corp.  
Cyrus O'Leary's Pies  
Cyrus O'Leary's Restaurant  
Davenport Hotel  
Deer Park Tire, Inc., #A72  
Didier's Yogurt & More  
Best Western  
Dieter Construction  
Discount Food & Surplus  
Dixon Investment Company  
Doubletree Guest Suites  
Seattle-Southcenter  
Downtown Toyota, Inc.  
Duane Grummons, D.D.S., M.S.D.  
eBay CAN! Matching Gifts Program  
Egger Meats  
Empire Health Services  
Entertainment Publications

Evening Presbyterian Church  
Facial Expressions  
Farmway Implement, Inc.  
Fat Daddy's, Inc.  
First Church of the Nazarene  
First Presbyterian Church, Kooskia  
First Presbyterian Church, Covina  
First Presbyterian Church, Jacksonville  
Five Mile Heights Pizza Parlor  
Ford Matching Gift Program to Advance Education  
Foundations, LLC  
Frank's Diner  
Franklin Park Homeowners Association  
Fred's Appliance & Home Entertainment  
Friendly Ford  
Futon Gallery  
Garland Animal Clinic  
Garland Theatre  
Garland Vision Source, Inc.  
G.E. Healthcare  
General Fire Equipment Company  
Genesis Financial, Inc.  
Georgia-Pacific Co.  
Glacier Woodworks  
Gober Son and Son  
Gordon Duncan Trust Fund  
Gorilla Controls  
Graybar Electric Company  
Great Harvest Bread Company  
Haase's Greenhouse, Inc.  
Hairloom  
Hamilton Photography & Film Co.  
Hand Technologies Corporation  
Hangups Gallery  
Hansen's Greenbluff Orchard  
Harry Ritchie's Jewelers

Hastings Books, Music & Video  
Hayden Lake Golf Shop  
Hedgehunters, Inc.  
Hilton Garden Inn  
Holiday Inn Express  
Home Depot Foundation  
HSBC  
The Ice Palace, Riverfront Park  
Inland Empire Sports Association  
Intel Corporation Political Action Committee  
Interface Computer School  
The Italian Kitchen  
Ivar's, Inc.  
J & J Construction  
J. Walter Thompson  
Jackie Lynn's Flowers & Balloon Specialties  
Jeffrey's Appliance Service  
Jester, Ltd.  
John H. Howarth, D.D.S., P.C.  
Just Roses  
K Diamond K Guest Ranch  
Kar-Brite Hand Wash  
Keith's Lawn & Landscape  
Kimmel Athletic Supply Company  
The Knot Hole Showcase Gallery  
Koerner's Furniture  
Korum Automotive Group, Inc.  
KREM Television  
Lakeshore, Inc.  
Lap Trays  
Larry Knutson, D.D.S., P.S.  
Laser Quest  
Law Offices of James H. Magee  
Lehigh Portland Cement Co.  
Les Schwab Tires



Lierman Business Services  
 Lilac Lanes  
 Llewellyn Elementary  
 Longhorn BBQ  
 Mack's Outdoor  
 Makin' Dough Ornaments  
 Manitou Park Presbyterian Church,  
 Tacoma  
 Marguerite's  
 McDonald's  
 McMorgan & Co.  
 Medtronic Foundation  
 The Men's Wearhouse  
 Meulink Engineering  
 Mid-City Shell  
 Milford's Fish House  
 Mission Community Presbyterian Church  
 Moore Landscape Materials & Fuel  
 Mountain Glo, Inc.  
 Mountain Press Publishing Co.  
 Mr. Wok  
 Mt. Pisqah Presbyterian Church  
 Mt. Spokane Ski & Snowboard Park  
 The Mustard Seed  
 National Furniture Stores, Inc.  
 NetTech  
 Nike Employee Matching Gift  
 Northgate Import Specialists  
 North Park Racquet Club  
 Northwest Baseball Academy  
 Northwest Ford Dealers Advertising  
 Association, Inc.  
 Northwest Therapy Resources  
 O'Doherty's Irish Grille  
 O'Malleys Sports Pub & Grill, Inc.  
 Okanogan Women's Association  
 Old Country Buffet

The Olive Garden  
 The Onion  
 Outback Steakhouse  
 Pabisz Motors, Inc.  
 Pacific Coast Ford, Inc.  
 Pattison's North Skating Rink  
 Payne Financial Group  
 Pediatric Associates of Spokane  
 Pepsi Bottling Group Foundation  
 Pepsi Bottling Group  
 Percy's  
 Perfection Tire Company  
 Peterson Ranch  
 Pfizer Foundation  
 Phil Long Dealerships, Inc.  
 Picnic Company Gourmet Cafe  
 Pioneer United Church  
 Pizza Hut  
 Pleasant Blends  
 Presbyterian Women, Waitsburg  
 Presbytery of Olympia  
 Price Costco  
 Pring Corporation  
 Prospector's Bar & Grill  
 P.S. Productions  
 Pull & Save Auto Parts  
 Pullman Presbyterian Church  
 Quality Inn Valley Suites  
 Ramada Inn  
 Ravalli County Bank  
 Ray Schultens Motors  
 Red Robin  
 Regal Cinemas  
 Regence Blue Shield  
 R.E.I.  
 Rick Singer Photography  
 Ritters Nursery & Florist

Rivers Center Dental Associates  
 Riverside Ford  
 Robert Hughes, D.D.S., P.S.  
 Robert Knowles Construction  
 Rock City Grill  
 Rocky Rococo  
 Roger & Dorene's Wood  
 Rosauers Supermarket #29  
 Rose City Park Presbyterian Church  
 Runner's Soul  
 Ryan House Studio of Stained Glass  
 Safeco Matching Gift Center  
 Safeway  
 San Diego City Schools  
 Schweitzer Mountain Resort  
 Sears Roebuck & Co.  
 See's Candies  
 Shari's  
 Shepherd of the Hills Church  
 Sherwin-Williams Company  
 Silver Mountain  
 Silverwood Amusement & Theme Park  
 Small's Construction Co., Inc.  
 Soft Water Culligan Service Co.  
 Sparky's Firehouse Subs  
 Spokandy  
 Spokane Athletic Supply  
 Spokane Chiefs Hockey  
 Spokane Civic Theatre  
 Spokane Indians Baseball Club  
 Spokane Power Tool & Hardware, Inc.  
 Spokane Shadow Soccer Club  
 Spokane Subs  
 Spokane Symphony  
 Standard Insurance Company  
 Stanek's Nursery Gifts & Floral  
 Staples

Starbucks  
 State Farm Mutual Insurance Co.  
 Steam Plant Grill  
 Stevens Concrete Construction, Inc.  
 The Stinking Rose  
 Subway  
 Suit Yourself  
 Summer Lawn & Saw  
 Super 8 Lodge  
 Synod of Alaska-NW, Presbyterian Church  
 Taco Time  
 Technical Waterproofing, Inc.  
 Tektronix Foundation  
 Things Remembered  
 Thomas Clemens Plumbing & Heating  
 Thomas G. Griffith, M.D., P.S.  
 Tomato Street  
 TruGreen Chemlawn  
 Twigs Bistro  
 United Church of Raymond  
 United Church Women's Organization  
 United Parcel Service of America, Inc.  
 Vista Village Activities Association  
 Walker's Furniture, Inc.  
 Washington Produce Co.  
 Wells Fargo Bank  
 Wendy's Old Fashioned Hamburgers  
 Weyerhaeuser Corporation Foundation  
 White Swan Car Wash  
 Wild Walls  
 Wildflowers Florist  
 William McAndrews Insurance  
 Wizard Works  
 Wolf Lodge Inn  
 Wonderland Golf & Games  
 Young Life Inland Northwest  
 Zip's  
 ZLB Plasma Services

## THE WHITWORTH FOUNDATION

*board of directors*

**Stacy Baker, '85**  
 Owner  
 Marketing Dynamics

**Michael Bell, '71**  
 President  
 Inland Empire Appraisal  
 Services, Inc.

**Harvey Bolton, '61**  
 Retired President and Owner  
 Spokane Surgical Supply

**Kristi Burns**  
 Vice President for  
 Institutional Advancement  
 Whitworth College

**Mary Dewey, '76**  
 Retired President  
 Import Market

**Peter Enkema, '69**  
 Sales Associate  
 Tomlinson Black North, Inc.

**William Fix**  
 Investment Advisor  
 William C. Fix Investments

**Jeff Johnson**  
 Secretary/Treasurer  
 Kiemle & Hagood Company

**Thomas Johnson**  
 Vice President for Business Affairs  
 Whitworth College

**Frank Knott, '64**  
 President  
 Ott-Knott, Inc.



**Ray Lawton**  
 Chairman of the Board  
 Lawton Printing, Inc.

**Ron McCloskey**  
 Retired Developer/Contractor

**William Moore**  
 Retired Senior Vice President  
 Washington Trust Bank

**Ben Nielsen**  
 Retired Architect  
 Northwest Architectural  
 Company

**William P. Robinson**  
 President  
 Whitworth College

**Michael Romine**  
 Vice President, CFO  
 Inland Northwest Distributing, Inc.

**Werner Rosenquist, '40**  
 Retired President  
 Empire Lines, Inc.

**Jerry Sheffels**  
 Owner  
 L. Sheffels and Sons, Inc.

**Jay Wernz, '58**  
 President  
 Bank of Fairfield

**Terri Wilson, '78**  
 Vice President of Operations  
 Spokane Teachers Credit Union

# board of trustees

**Rev. Dr. Peter B. Barnes**  
Senior Pastor  
First Presbyterian Church  
of Boulder

**James S. Bennett, '89**  
Advisor  
American Express Financial

**Harvey V. Bolton, '60**  
Retired President and Owner  
Spokane Surgical Supply

**Charles L. Boppell, '65**  
President and CEO  
Worldwide Restaurant Concepts

**Rev. Dr. Mark A. Brewer**  
Senior Pastor  
Bel Air Presbyterian Church

**Scott C. Chandler, '85**  
Managing Partner  
Franklin Court Partners, LLC

**Rev. Richard B. Cole, '51**  
Retired Pastor

**Laurel Coleman, M.D., '84**  
Physician

**Debbie Cozzetto**  
Director of Sales & Marketing  
Vandervert Developments/  
Hotel Division

**Shaun M. Cross**  
Managing Partner  
Paine, Hamblen, Coffin  
Brooke & Miller LLP



**Katherine Damiano, '89**  
Musician

**Thomas Delanty**  
President  
Financial Services Corporation  
of Washington

**Curtis Estes**  
Agent  
Northwestern Mutual Life

**William Fix**  
Investment Advisor  
William C. Fix Investments

**Rev. Dr. Woody Garvin**  
Senior Pastor  
Valley Presbyterian Church



**Marvin D. Heaps, '54**  
President  
Marvin D. Heaps Associates, Inc.

**James M. Hershberger**  
Chief Financial Officer  
Continental Mills

**Rev. Douglas A. Kelly**  
Synod Executive  
The Synod of Alaska-Northwest

**Ray Lawton**  
Chairman of the Board  
Lawton Printing Company

**Rev. Dr. Richard Leon**  
Retired Pastor



**Jean McCall**  
VP/Co-Owner  
Solar Systems & Peripherals, Inc.

**Alan L. McGinnis, '82**  
Consultant

**Rev. Dr. Richard E. Melin**  
Executive Presbyter  
Presbytery of the Inland  
Northwest

**James Munyon**  
President, Food Group  
J.R. Simplot Company

**David G. Myers, '64**  
John Dirk Werkman Professor of  
Psychology, Hope College



**Walter M. Oliver, '67**  
VP-HR/Administration  
General Dynamics

**Rev. Gayle Parker**  
Pastor

**John A. Pouk**  
Retired Chairman/CEO  
Pouk & Steinle, Inc.

**John David Robblee, '62**  
CEO  
Six Robblees', Inc.

**William P. Robinson**  
President  
Whitworth College



**Werner Rosenquist, '40**  
Retired President  
Empire Lines, Inc.

**Judi Shupper**  
Community Volunteer

**Rev. Dr. James M. Singleton**  
Senior Pastor  
Covenant Presbyterian Church

**Jan Skaggs**  
Community Volunteer

**Anne Storm, '74**  
Community Volunteer

**Arthur E. Symons, Jr., '51**  
Founder  
Symons Frozen Foods, Inc.



**Rev. Mark J. Toone**  
Senior Pastor  
Chapel Hill Presbyterian Church

**Don Wallis**  
President  
WSA Construction, Inc.

**Jeff Whaley, '82**  
CEO  
One Union Square

**Judith Williams**  
Founder, Vice Chair  
Telect, Inc.





WHITWORTH  
AN EDUCATION OF MIND AND HEART