



## Whitworth University's Gap Analysis Report for the School of Continuing Studies and Graduate Programs for NWCCU

The 2020 standards of the Northwest Commission on Colleges and Universities (NWCCU) place greater accountability on its institutions to demonstrate continuous improvement in the areas of student achievement and success, with a focus on closing equity gaps. Student success is at the heart of Whitworth's mission "to provide its diverse student body an education of the mind and heart, equipping its graduates to honor God, follow Christ, and serve humanity." Thus, Whitworth University is committed to enabling all its students to succeed in all of its educational programs and activities.

The following disaggregated data on student success and achievement at Whitworth University is specifically for our School of Continuing Studies and graduate students. The School of Continuing Studies program is an undergraduate program for returning older adults wishing to finish their degrees. The sources of information are Whitworth's demographic, enrollment and graduation records.

### **PLEASE NOTE:**

Our School of Continuing Studies and graduate students do not begin at Whitworth as full-time, first-time undergraduate students, so we are not able to use the federally defined "cohorts" that are usually used for this type of reporting. For this reason, we have defined our cohorts for the purpose of this report, as those who began their studies at Whitworth for the first time during a specified academic year. Note it can be any time during that academic year, not just the fall as the federal definition of "cohort" requires. These cohorts are not limited to just full-time students and are labeled as AYC##. Our special cohort "AYC15" means Academic Year 15 cohort, and would include any student who began their studies at Whitworth during the 2015-16 academic year.

Compiled by the Office of Institutional Research, Summer 2024

## Definitions and Notes

**Whitworth's Special Cohort** - The group of students who began during the academic year indicated. AYC15 indicates students who began as students at Whitworth for the first time during the 2015-16 academic year, whether full-time or part-time. This is not the "federal cohort" required for federal reporting as we do not have incoming first-time, full-time students in our School of Continuing Studies or graduate programs.

**Comparison Schools** - We are unable to provide comparison school data, because it is not available to us. Schools do not report their continuing studies or graduate students by cohorts.

**First-Generation Student** - A person for whom neither parent has a baccalaureate degree. Whitworth is unable to disaggregate at this level, because the data is not consistently collected for our School of Continuing Studies or graduate students.

**Graduation Rate** - The percent of students in a cohort who graduated from Whitworth University as of Summer 2024. It is usually tracked for those who finish in four years or six years, however, those time periods are irrelevant for the students included in this report, so we are simply reporting the percent of those who graduated within Whitworth's special cohorts. As cohorts get closer to our present time (Summer 2024) the graduation rate drops off as many are still working to complete their degrees.

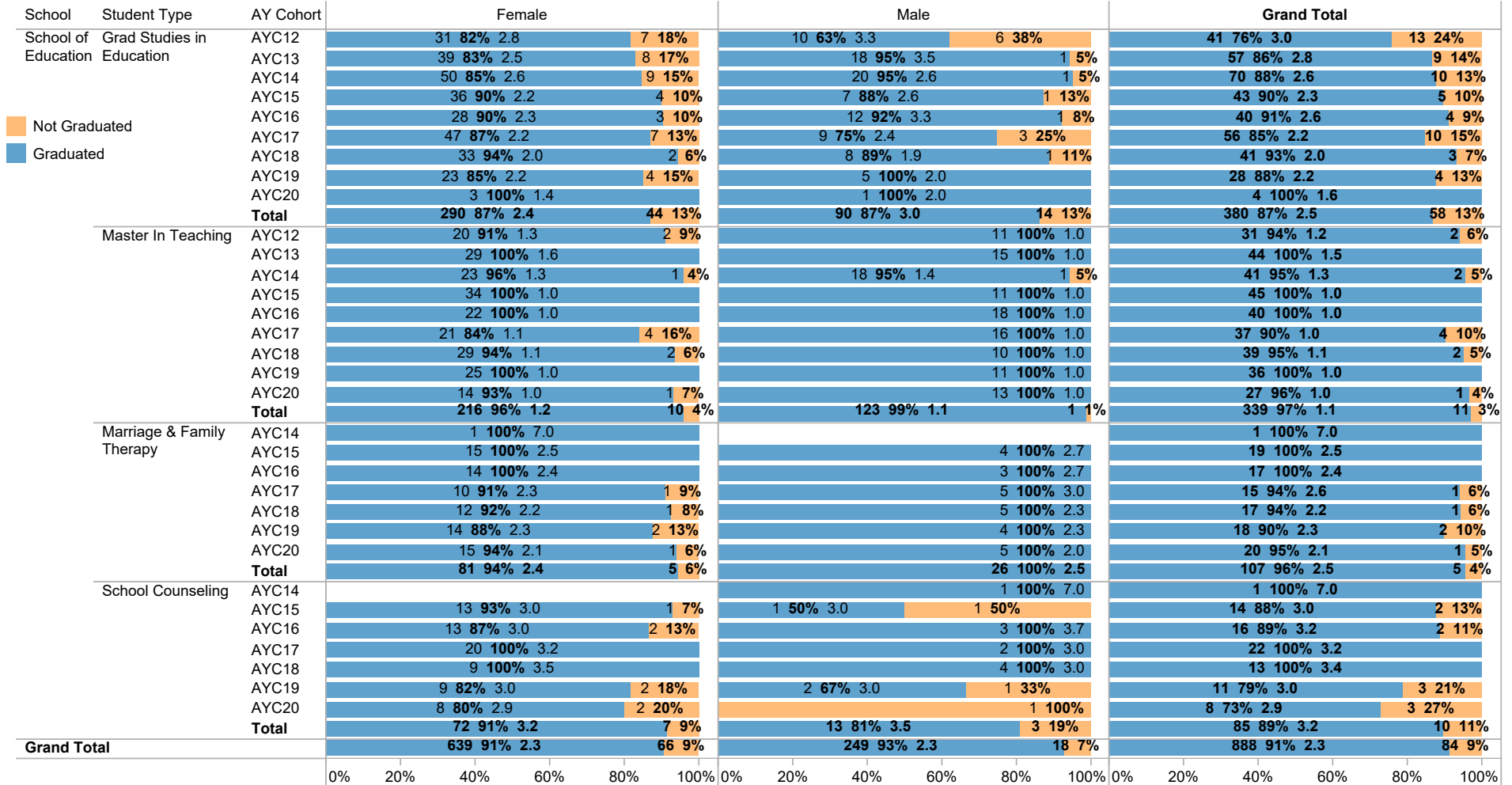
**Race & Ethnicity** - Race and ethnicity categories are based on those required for federal IPEDS reporting. For more information go to this link on the federal IPEDS website. <https://nces.ed.gov/ipeds/report-your-data/race-ethnicity-definitions>

**Retention Rate** - The percent of students in a cohort who continued their education at Whitworth through a second term, as of Summer 2024.

**Socioeconomic Level** - Whitworth has used Pell eligibility to distinguish between socioeconomic levels for its traditional undergraduate reporting. However, Whitworth is unable to disaggregate at this level for these students, because the data is limited for our School of Continuing Studies and not applicable for our graduate level students.

## Graduate School of Education Graduation and Time to Graduate Rates

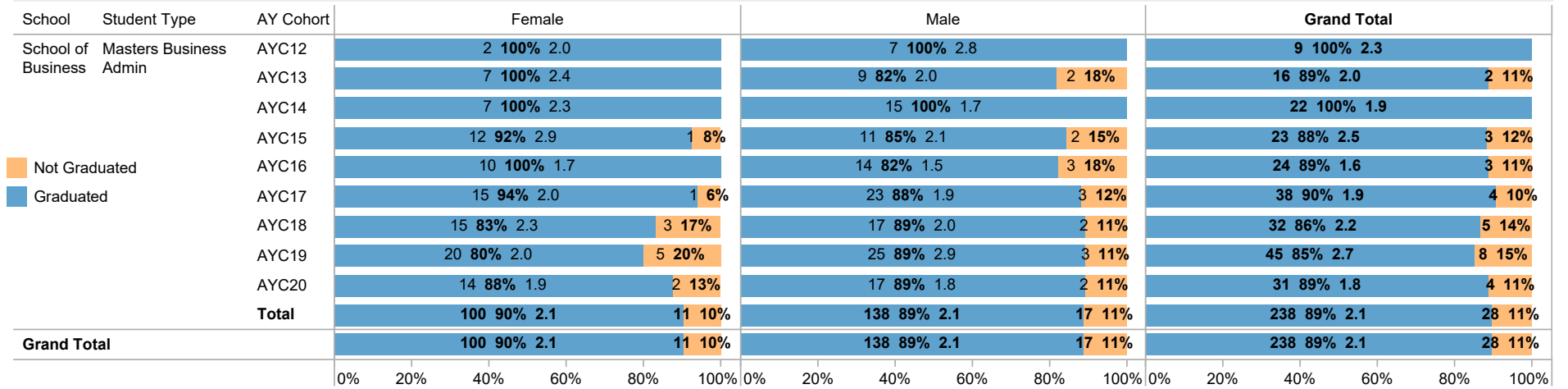
(Values in blue show number and percent of students who graduated and the number of years to graduate as of Summer 2024.)



GSE Students are not given a Cohort assignment upon entry. They are normally tracked by Student Type. For this report Cohort assignments have been generated by grouping all GSE students in each Student Type who enrolled in the same Academic Year. That allows us to create Graduation and Time to Graduation rates in the more familiar Cohort model used for Undergraduates.

## School of Business Graduation and Time to Graduate Rates

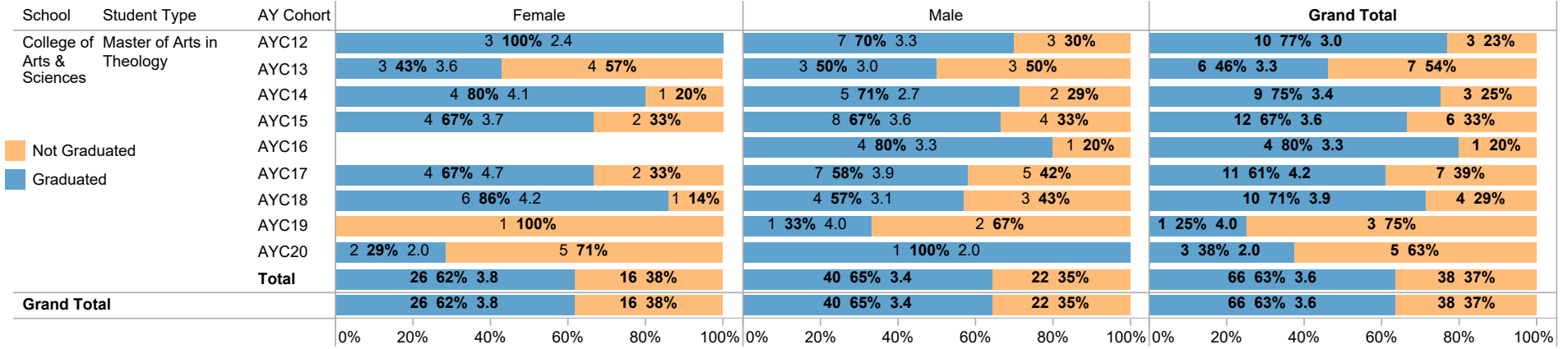
(Values in blue show number and percent of students who graduated and the number of years to graduate as of Summer 2024.)



WSB Students are not given a Cohort assignment upon entry. They are normally tracked by Student Type. For this report Cohort assignments have been generated by grouping all WSB students in each Student Type who enrolled in the same Academic Year. That allows us to create Graduation and Time to Graduation rates in the more familiar Cohort model used for Undergraduates.

## Graduate Studies in the College of Arts and Sciences Graduation and Time to Graduate Rates

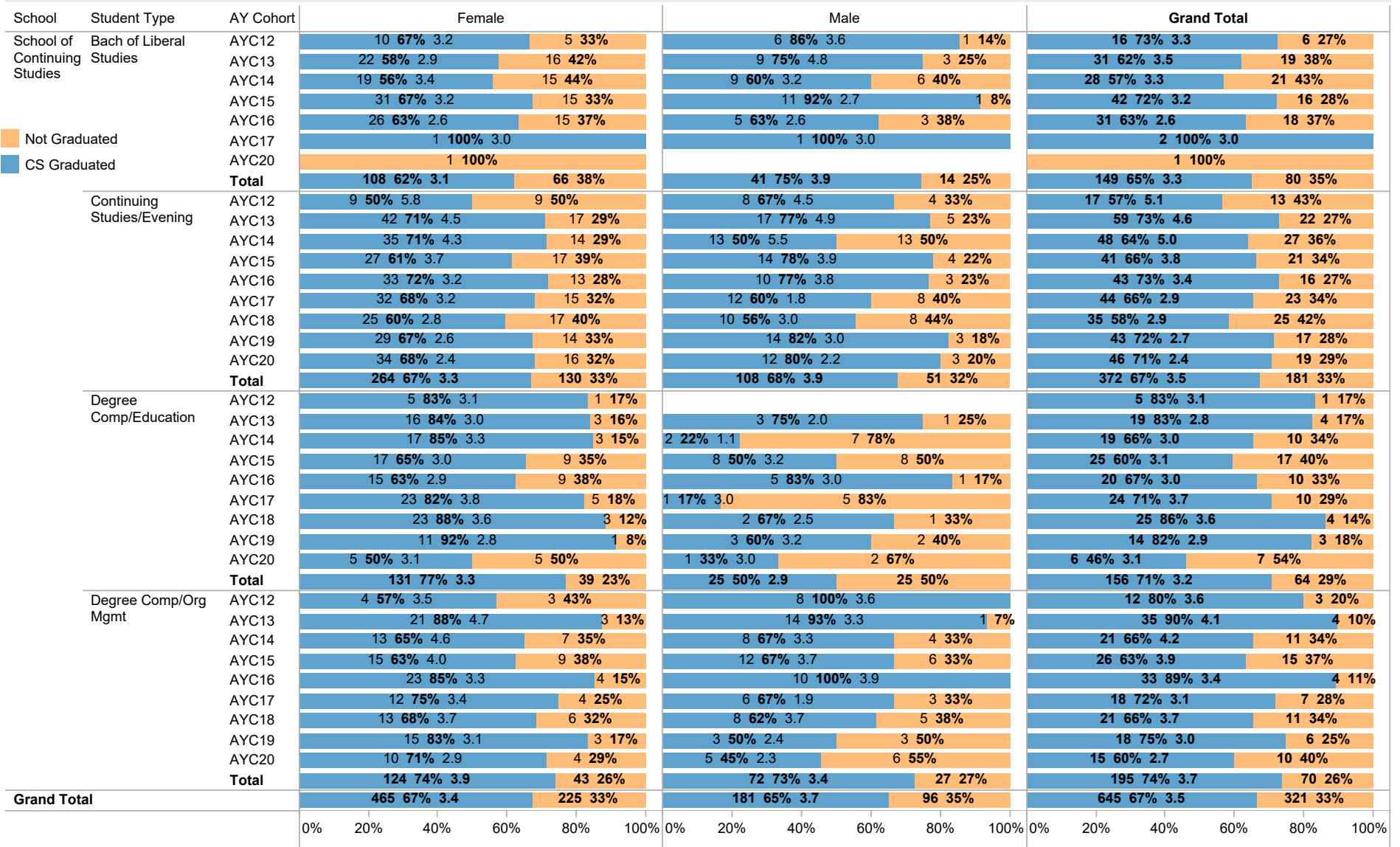
(Values in blue show number and percent of students who graduated and the number of years to graduate as of Summer 2024.)



CAS Students are not given a Cohort assignment upon entry. They are normally tracked by Student Type. For this report Cohort assignments have been generated by grouping all CAS students in each Student Type who enrolled in the same Academic Year. That allows us to create Graduation and Time to Graduation rates in the more familiar Cohort model used for Undergraduates.

## School of Continuing Studies Graduation and Time to Graduate Rates

(Values in blue show number and percent of students who graduated and the number of years to graduate as of Summer 2024.)



CS Students are not given a Cohort assignment upon entry. They are normally tracked by Student Type. For this report Cohort assignments have been generated by grouping all CS students in each Student Type who enrolled in the same Academic Year. That allows us to create Graduation and Time to Graduation rates in the more familiar Cohort model used for Undergraduates.  
 Note: The student type of "Bachelor of Liberal Studies" is no longer used, so there is no cohort beyond "AYC17" for this category.

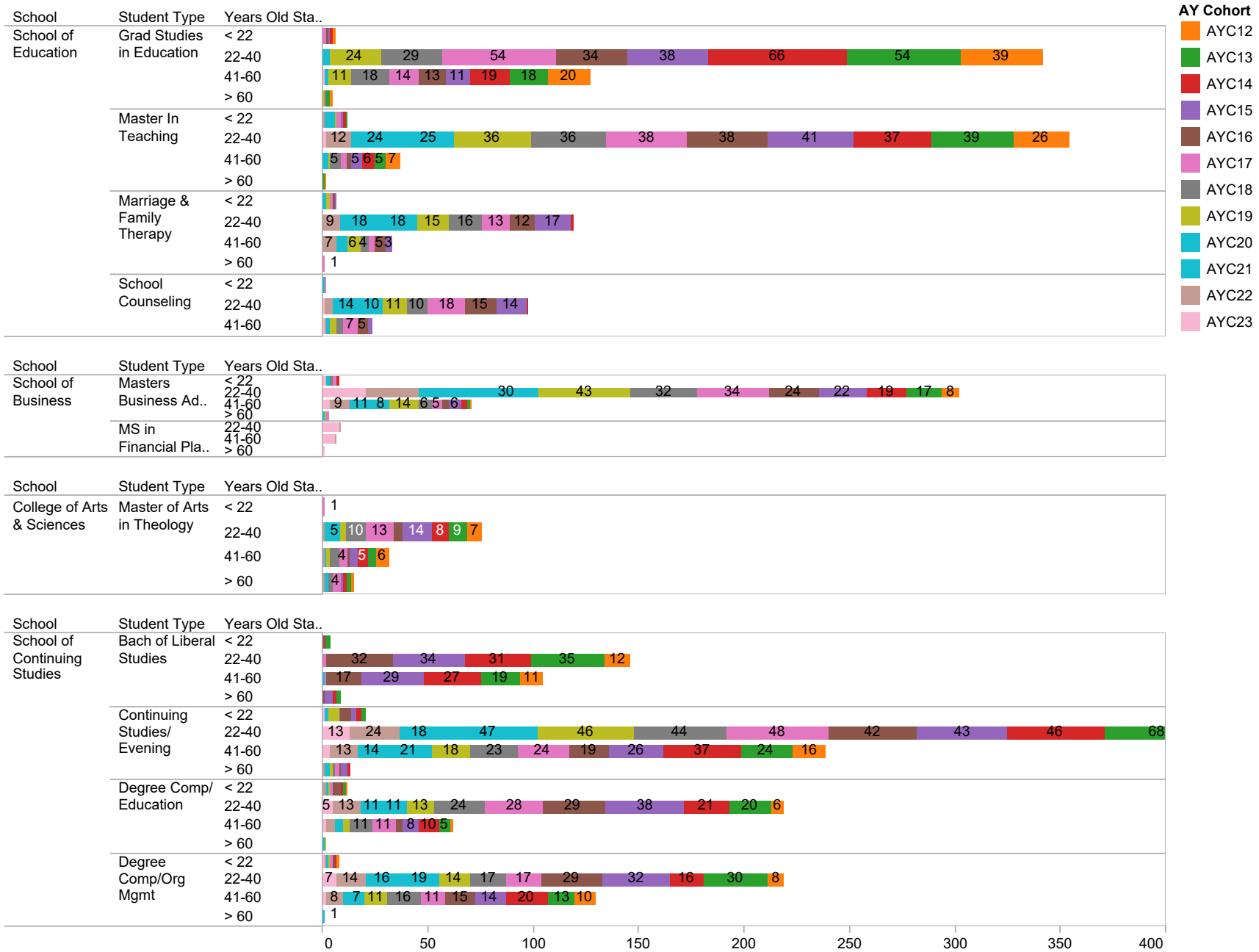
Graduate and Continuing Studies Term Retention Rates are based on 2 or more terms attended as of Summer 2024. This does not mean they were consecutive terms but that the student attended at least the number of terms indicated.

Student Type	Terms Attended	Female	Male	Grand Total
Admin & Leadership	2 or More Terms	27 93%	10 100%	37 95%
	Less than 2 Terms	2 7%		2 5%
Bach of Liberal Studies	2 or More Terms	174 93%	60 98%	234 94%
	Less than 2 Terms	13 7%	1 2%	14 6%
Behavior Analysis	2 or More Terms	35 97%	10 100%	45 98%
	Less than 2 Terms	1 3%		1 2%
Brewing Cert - No Credits	2 or More Terms			
Brewing Certificate	2 or More Terms			
Continuing Studies/Evening	2 or More Terms	435 96%	184 97%	619 96%
	Less than 2 Terms	18 4%	5 3%	23 4%
Degree Comp/Education	2 or More Terms	225 99%	69 95%	294 98%
	Less than 2 Terms	2 1%	4 5%	6 2%
Degree Comp/Org Mgmt	2 or More Terms	191 99%	118 96%	308 98%
	Less than 2 Terms	2 1%	5 4%	7 2%
Educational Admin	2 or More Terms			
Grad Studies in Education	2 or More Terms	355 99%	108 96%	463 98%
	Less than 2 Terms	5 1%	5 4%	10 2%
Institute of Leadership Cert	2 or More Terms			
Marriage & Family	2 or More Terms	124 99%	42 100%	166 99%
	Less than 2 Terms	1 1%		1 1%
Master of Arts in Theology	2 or More Terms	47 96%	69 96%	116 96%
	Less than 2 Terms	2 4%	3 4%	5 4%
Masters Business Admin	2 or More Terms	150 97%	195 95%	345 96%
	Less than 2 Terms	4 3%	10 5%	14 4%
MIT Master In Teaching	2 or More Terms			
Montessori	2 or More Terms	25 96%	4 100%	29 97%
	Less than 2 Terms	1 4%		1 3%
Montessori (California)	2 or More Terms			
Montessori (Oregon)	2 or More Terms	42 98%	1 100%	43 98%
	Less than 2 Terms	1 2%		1 2%
Montessori Cert-Only	2 or More Terms			
MS in Athletic Training	2 or More Terms			
MS in Financial Planning	2 or More Terms			
Occupational Therapy	2 or More Terms			
Operations Management Cert	Less than 2 Terms			
Physical Therapy	2 or More Terms	9 100%	11 79%	20 87%
	Less than 2 Terms		3 21%	3 13%
Principal Cert	2 or More Terms			
School Counseling	2 or More Terms	94 98%	23 100%	117 98%
	Less than 2 Terms	2 2%		2 2%
Social & Emotional Learning	2 or More Terms			
Special Ed Certification Only	2 or More Terms			
Special Education	2 or More Terms			
Teaching & Learning	2 or More Terms	38 95%	17 100%	55 96%
	Less than 2 Terms	2 5%		2 4%

### Total Term Retention

Terms Attended	Female	Male	Grand Total
2 or More Terms	1,930 97%	937 96%	2,866 97%
Less than 2 Terms	56 3%	37 4%	93 3%
	0% 20% 40% 60% 80% 100% 120%	0% 20% 40% 60% 80% 100% 120%	0% 20% 40% 60% 80% 100% 120%
	Percent of Students	Percent of Students	Percent of Students

### Age Range of Students by School, Academic Program Type and Cohort



This data is provided to see the range of ages of our students in these programs.